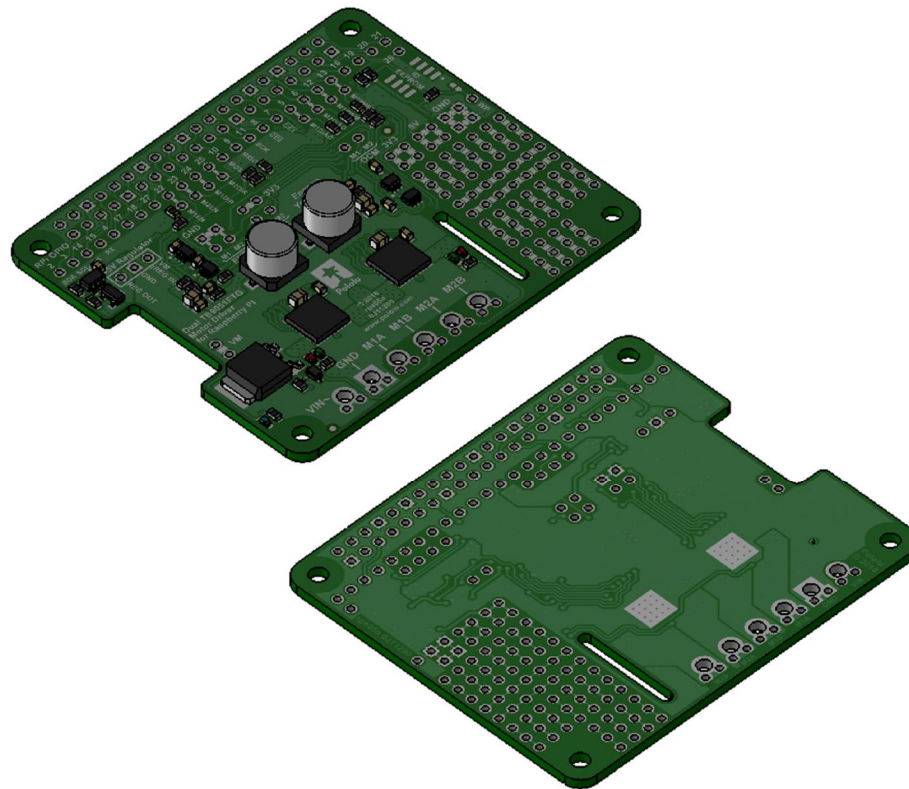
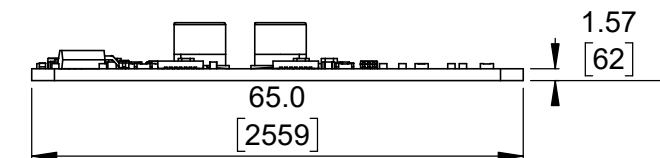


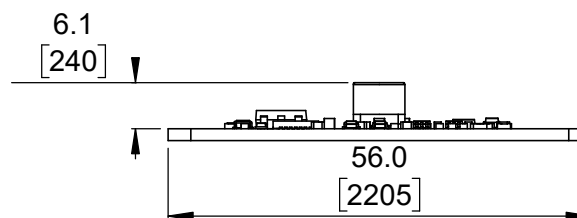
① Top view (actual size)
Scale 1:1



② Isometric view
Scale 1:1



③ Long profile
Scale 1:1



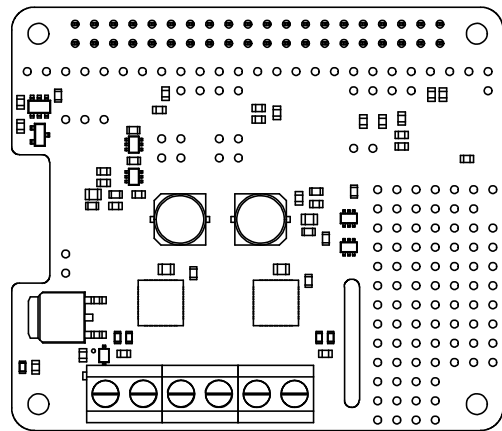
④ Short profile
Scale 1:1

1. To get the specified scale, select 100% in print settings.
2. Drill location tolerance: ± 0.1 [± 5].
3. Board edge tolerance: ± 0.3 [± 10].

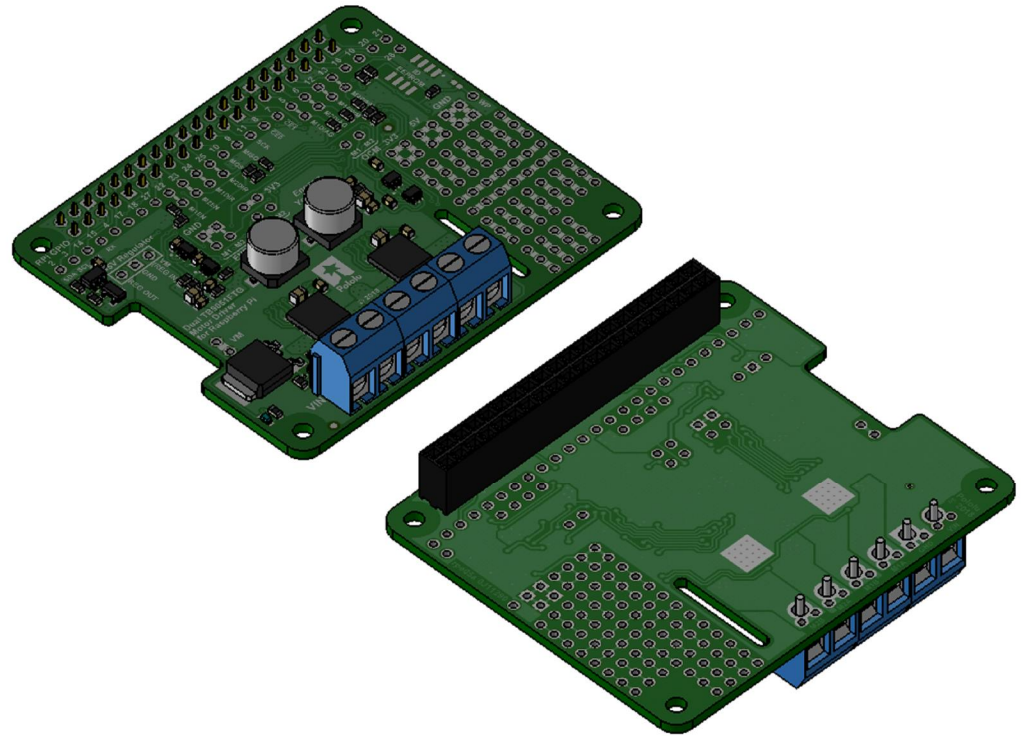
<https://www.pololu.com/product/2761>

Name: Dual TB9051FTG Motor Driver for Raspberry Pi (Partial Kit)		Item number: 2761
Drawing date: 16 July 2018	Dev code: rpe05a	
Units: mm [mil]	Material: mixed	

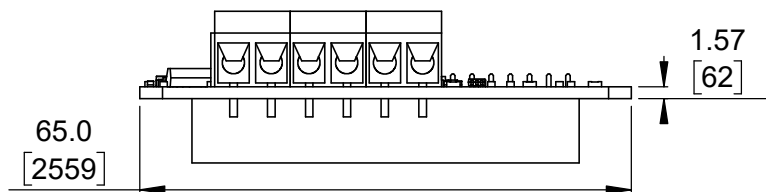




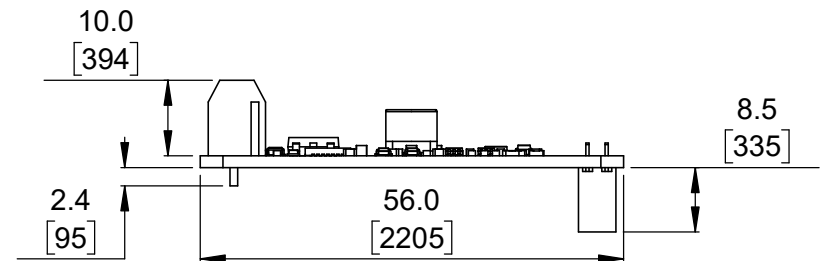
1 Top view (actual size)
(with included through-hole components)
Scale 1:1



2 Isometric view
(with included through-hole components)
Scale 1:1




3 Long profile
(with included through hole components)
Scale 1:1

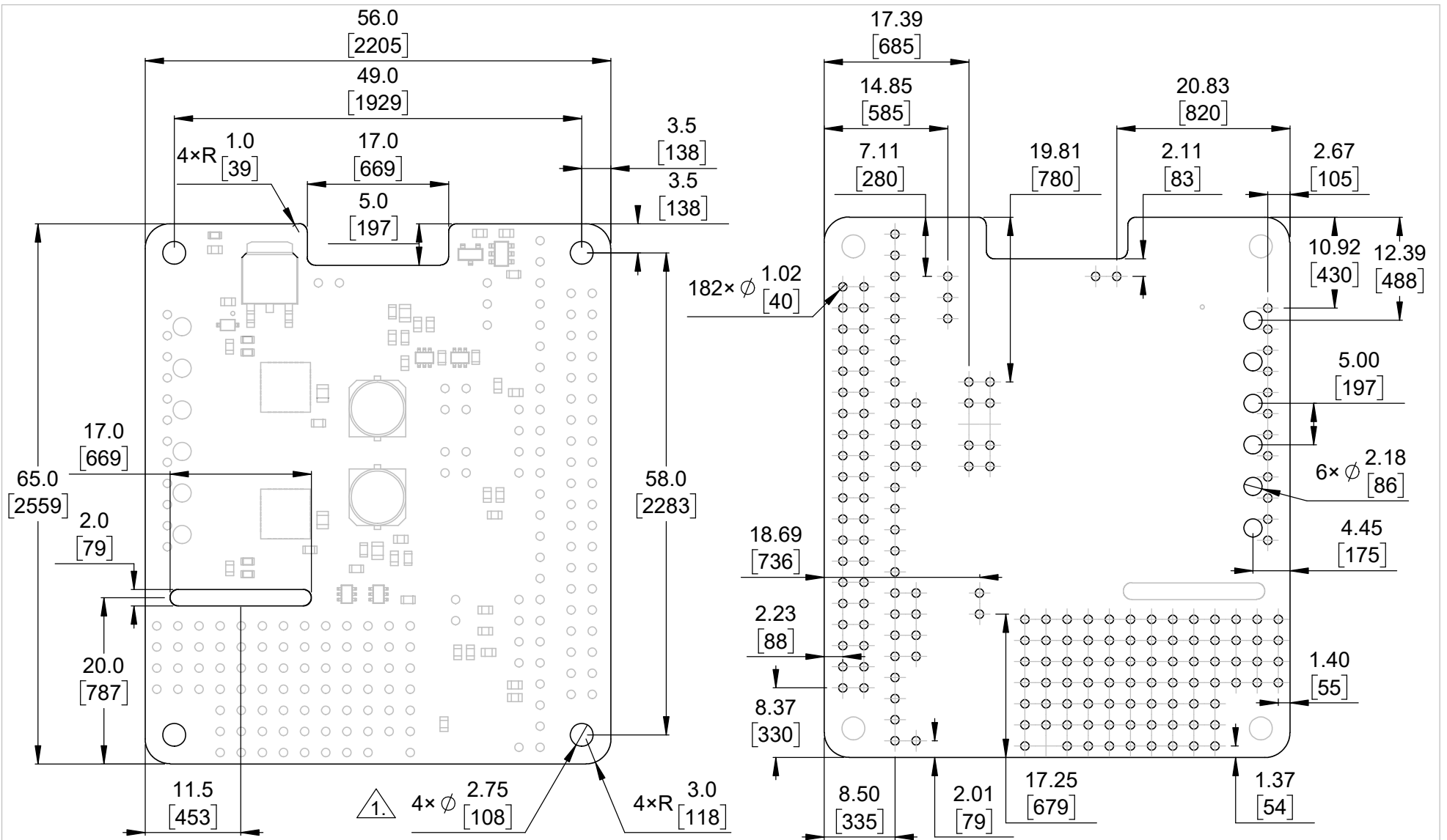


4 Short profile
(with included through-hole components)
Scale 1:1

1. To get the specified scale, select 100% in print settings.
2. Drill location tolerance: ± 0.1 [± 5].
3. Board edge tolerance: ± 0.3 [± 10].

<https://www.pololu.com/product/2762>

Name: Dual TB9051FTG Motor Driver for Raspberry Pi (Assembled)		Item number: 2762
Drawing date: 16 July 2018	Dev code: rpe05a	 Pololu Robotics & Electronics © 2018 Pololu Corporation
Units: mm [mil]	Material: mixed	




① Board dimensions (top view)
Scale 3:2

② Connector callouts (bottom view)
Scale 3:2

1. Intended for M2.5 screws.
2. Grid lines indicate 2.54 mm [100 mil] spacing.
3. To get the specified scale, select 100% in print settings.
4. Drill location tolerance: ± 0.1 [± 5].
5. Board edge tolerance: ± 0.3 [± 10].

<https://www.pololu.com/product/2761>

Name: Dual TB9051FTG Motor Driver for Raspberry Pi		Item number: 2761, 2762
Drawing date: 16 July 2018	Dev code: rpe05a	 Pololu Robotics & Electronics © 2018 Pololu Corporation
Units: mm [mil]	Material: mixed	