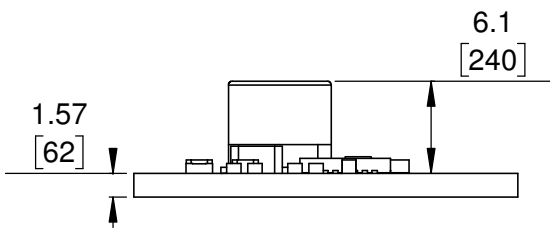


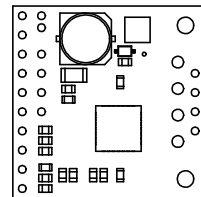
① Board dimensions (top view)
Scale 2:1

② Connector callouts (bottom view)
Scale 2:1

③ Isometric view
Scale 2:1



④ Profile
Scale 2:1



⑤ Actual size
Scale 1:1

- ① Intended for #2 screws.
- ② To get the specified scale, select 100% in print settings.
- ③ Drill location tolerance: ± 0.1 [± 5].
- ④ Board edge tolerance: ± 0.3 [± 10].

https://www.pololu.com/product/2997	
Name: TB9051FTG Single Brushed DC Motor Driver Carrier	Item number: 2997
Drawing date: 27 April 2018	Dev code: md36a
Units: mm [mil]	Material: mixed

