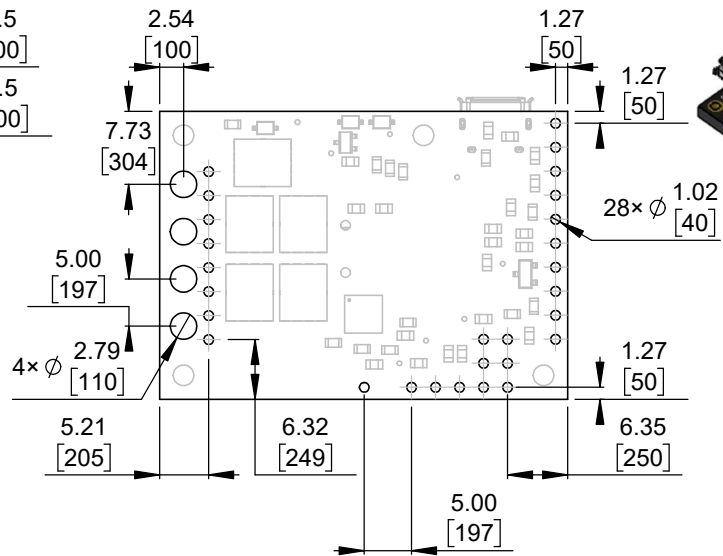
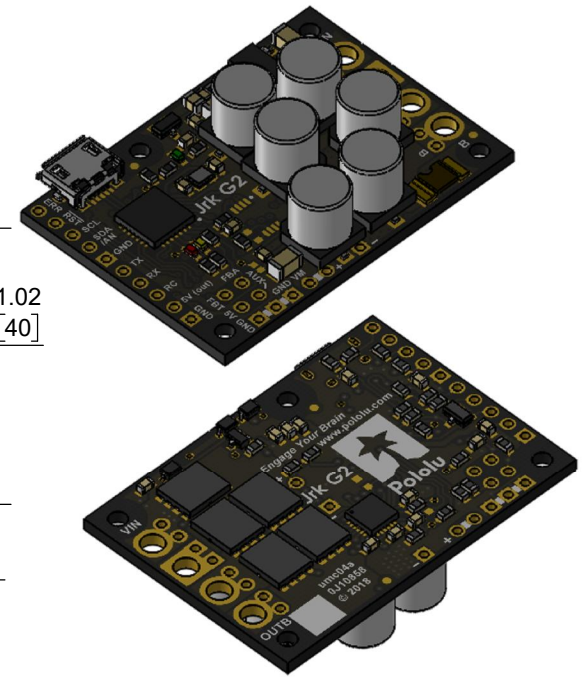


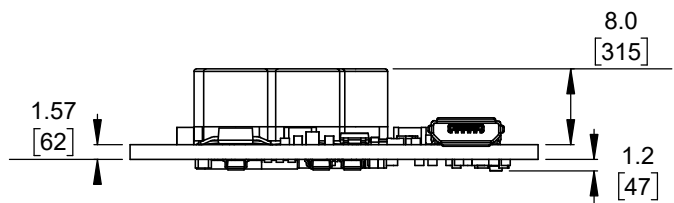
① Board dimensions (top view)
Scale 5:4



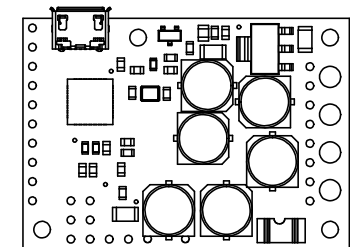
② Connector callouts (bottom view)
Scale 5:4



③ Isometric view
Scale 5:4




④ Profile
Scale 5:4



⑤ Actual size
Scale 1:1

- 1. Intended for #2 screws.
- 2. Grid lines indicate 2.54 mm [100 mil] spacing.
- 3. To get the specified scale, select 100% in print settings.
- 4. Drill location tolerance: ± 0.1 [± 5].
- 5. Board edge tolerance: ± 0.3 [± 10].

<https://www.pololu.com/product/3148>

Name: Jrk G2 USB Motor Controller with Feedback		Item number: 3148, 3149
Drawing date: 13 April 2018	Dev code: umc04a	 © 2018 Pololu Corporation
Units: mm [mil]	Material: mixed	