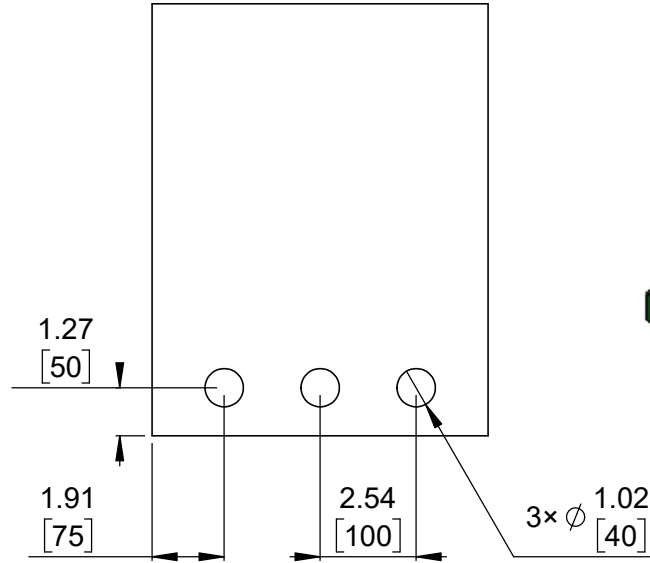
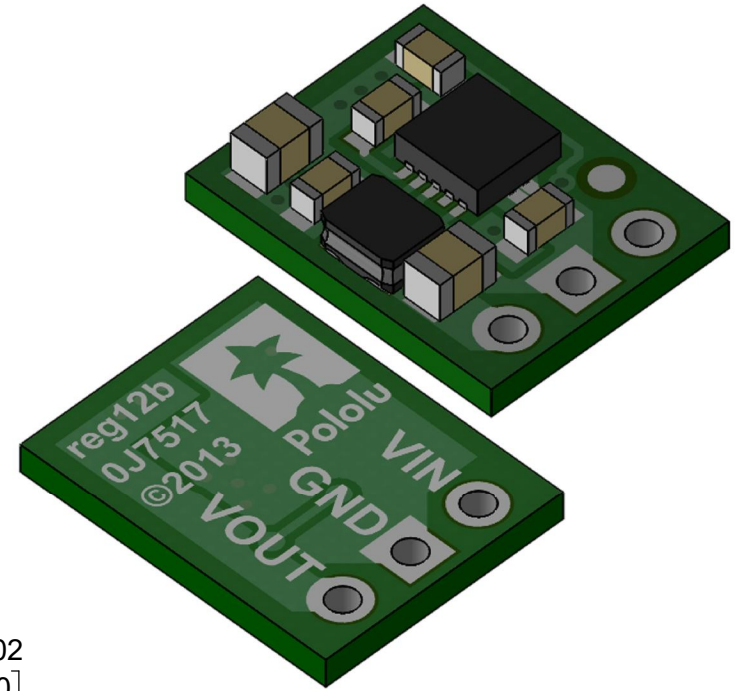


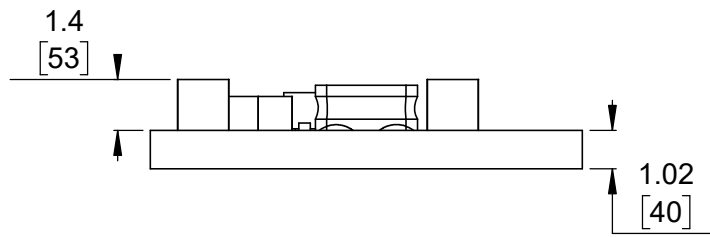
1 Board dimensions (top view)
Scale 5:1



2 Connector callouts (bottom view)
Scale 5:1



3 Isometric view
Scale 5:1




4 Profile
Scale 5:1



5 Actual size
Scale 1:1

1. To get the specified scale, select 100% in print settings.
2. Drill location tolerance: ± 0.1 [± 5].
3. Board edge tolerance: ± 0.3 [± 10].

<https://www.pololu.com/product/2563>

Name: Pololu Step-Up Voltage Regulator U1V10Fx		Item number: 2563-2564
Drawing date: 16 March 2018	Dev code: reg12b	 © 2018 Pololu Corporation
Units: mm [mil]	Material: mixed	