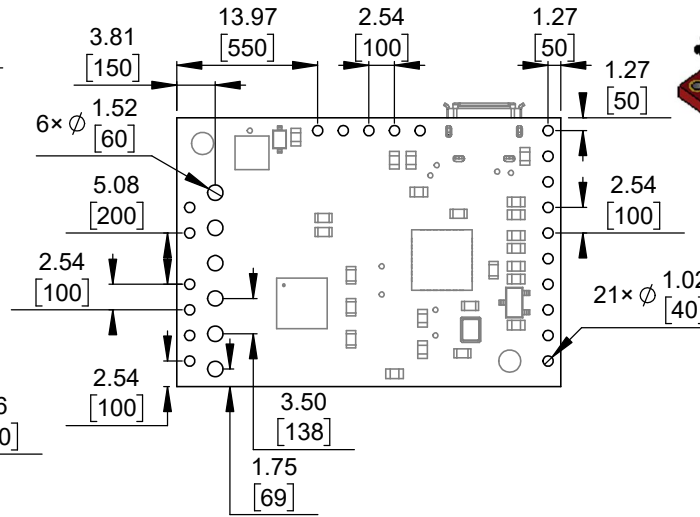
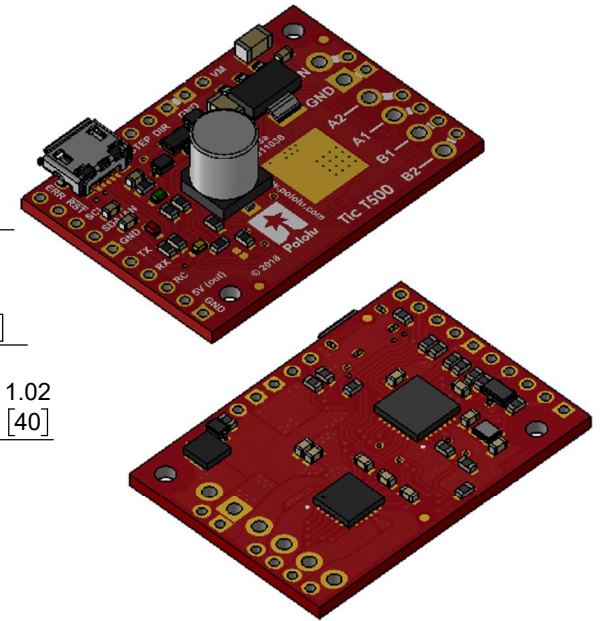


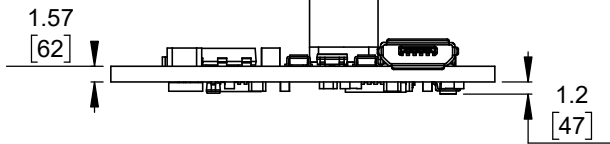
① Board dimensions (top view)
Scale 4:3



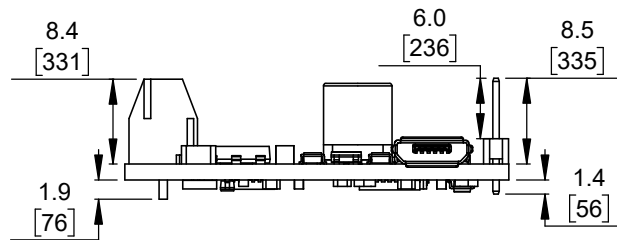
② Connector callouts (bottom view)
Scale 4:3



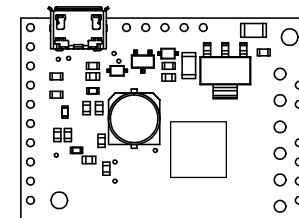
③ Isometric view
Scale 4:3



④ Profile
Scale 4:3




⑤ Profile (with through-hole connectors)
Scale 4:3



⑥ Actual size
Scale 1:1

- ① Intended for #2 screws.
- ② To get the specified scale, select 100% in print settings.
- ③ Drill location tolerance: ± 0.1 [± 5].
- ④ Board edge tolerance: ± 0.3 [± 10].

<https://www.pololu.com/product/3134>

Name: Tic T500 MP6500 Stepper Motor Controller		Item number: 3134, 3135
Drawing date: 30 March 2018	Dev code: tic03a	 © 2018 Pololu Corporation
Units: mm [mil]	Material: mixed	