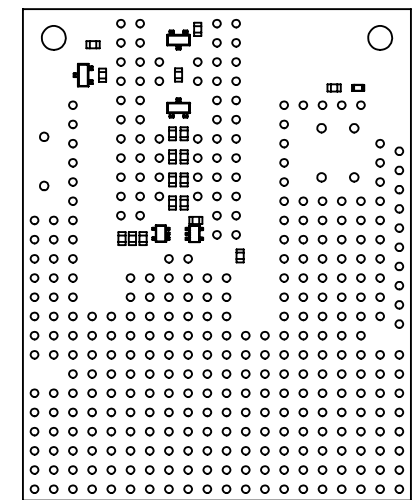


① Board dimensions (top view)
Scale 1:1

② Connector callouts (bottom view)
Scale 1:1

③ Isometric view
Scale 4:5



⑤ Actual size
Scale 1:1



④ Profile
Scale 1:1

1. Grid lines indicate 2.54 mm [100 mil] spacing.
2. To get the specified scale, select 100% in print settings.
3. Drill location tolerance: ± 0.1 [± 5].
4. Board edge tolerance: ± 0.3 [± 10].

https://www.pololu.com/product/2513	
Name: Wixel Shield for Arduino, v1.1	Item number: 2513
Drawing date: 2 January 2018	Dev code: ash01b
Units: mm [mil]	Material: mixed

