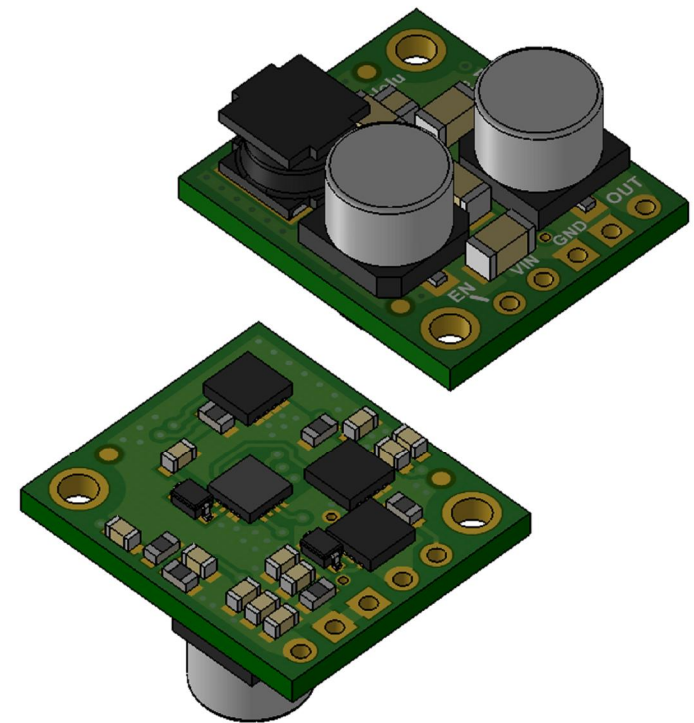
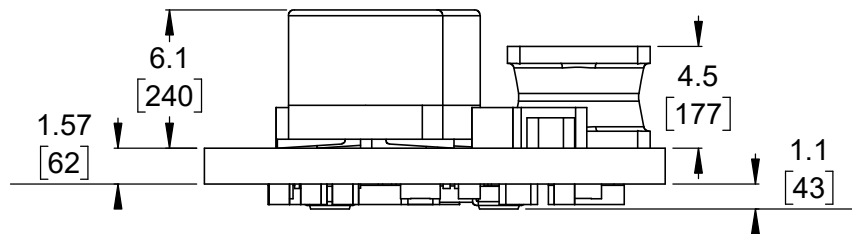


① Board dimensions (top view)
Scale 3:1

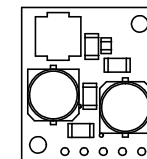
② Connector callouts (bottom view)
Scale 3:1



③ Isometric view
Scale 5:2




④ Profile
Scale 3:1



⑤ Actual size
Scale 1:1

- ①. Intended for #2-56 screws.
- 2. To get the specified scale, select 100% in print settings.
- 3. Drill location tolerance: ± 0.1 [± 5].
- 4. Board edge tolerance: ± 0.3 [± 10].

<https://www.pololu.com/product/2851>

Name: Pololu 5V, 5A Step-Down Voltage Regulator D24V50F5		Item number: 2851
Drawing date: 2 January 2018	Dev code: reg15d	 © 2018 Pololu Corporation
Units: mm [mil]	Material: mixed	