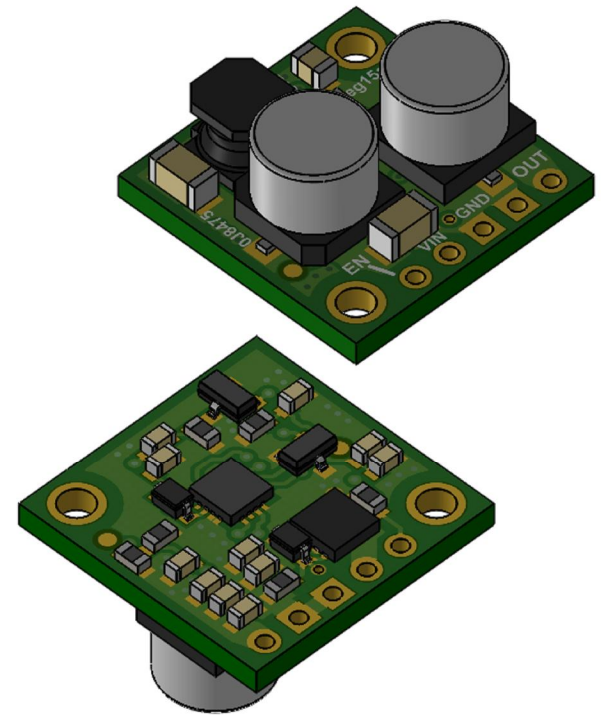
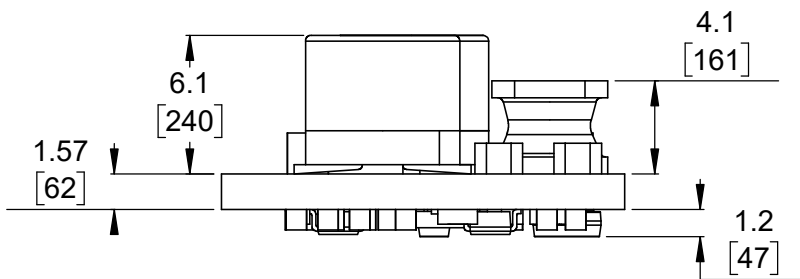


① Board dimensions (top view)  
Scale 3:1

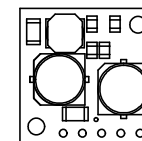
② Connector callouts (bottom view)  
Scale 3:1



③ Isometric view  
Scale 5:2



④ Profile  
Scale 3:1



⑤ Actual size  
Scale 1:1

- ①. Intended for #2-56 screws.
- ②. To get the specified scale, select 100% in print settings.
- ③. Drill location tolerance:  $\pm 0.1$  [ $\pm 5$ ].
- ④. Board edge tolerance:  $\pm 0.3$  [ $\pm 10$ ].

<https://www.pololu.com/product/2849>

Name: Pololu 2.5A Step-Down Voltage Regulator D24V25Fx		Item number: 2849, 2850, 2852-2854
Drawing date: 19 December 2017	Dev code: reg15a	 <b>Pololu</b> Robotics & Electronics © 2017 Pololu Corporation
Units: mm [mil]	Material: mixed	