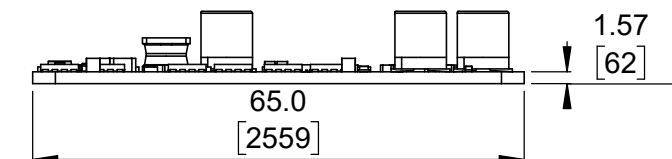
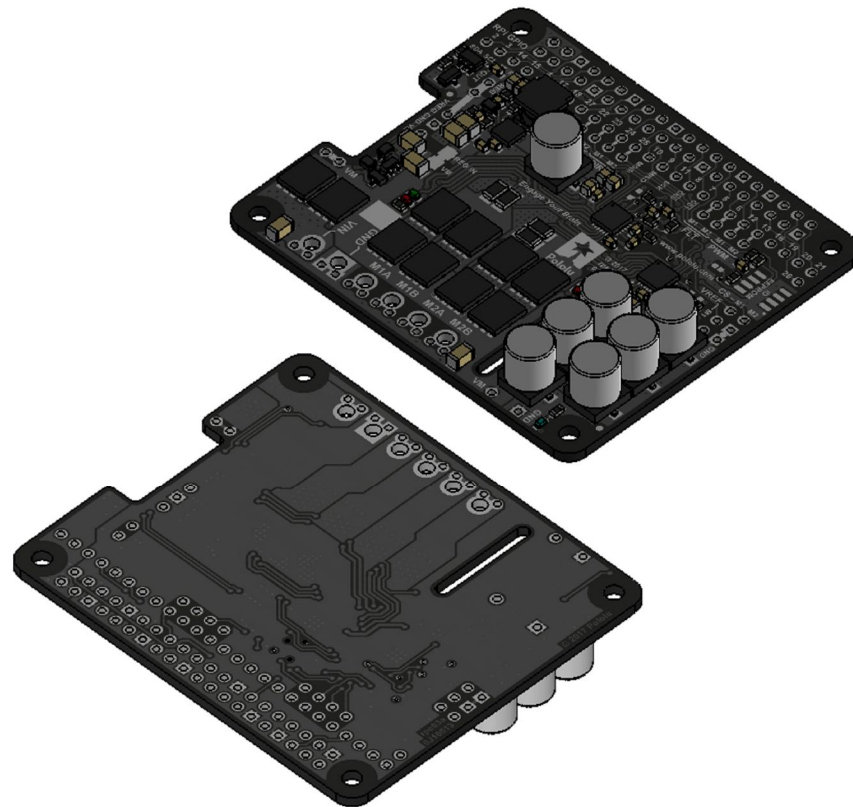


① Top view (actual size)
Scale 1:1



③ Long profile
Scale 1:1




② Isometric view
Scale 4:5

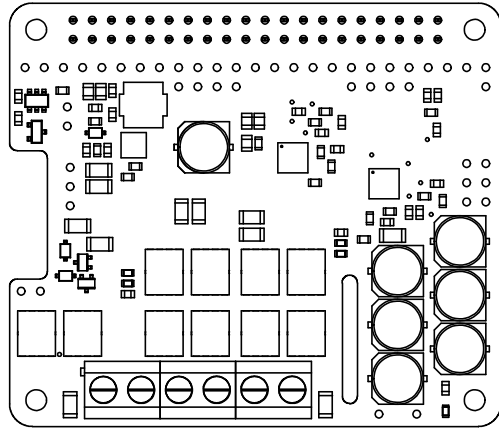


④ Short profile
Scale 1:1

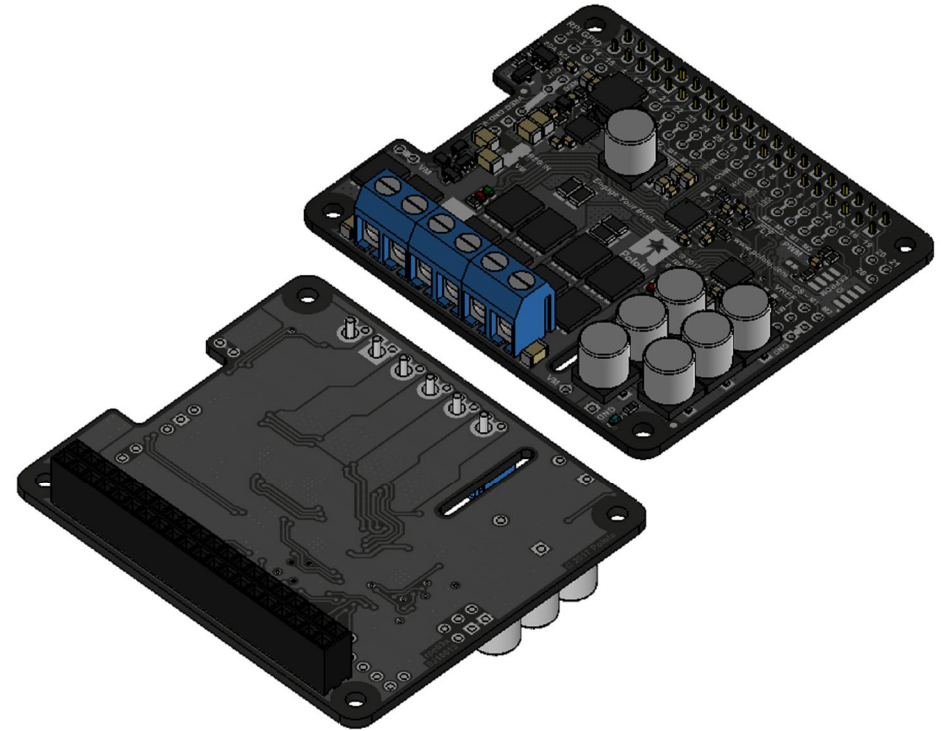
1. To get the specified scale, select 100% in print settings.
2. Drill location tolerance: ± 0.1 [± 5].
3. Board edge tolerance: ± 0.3 [± 10].

<https://www.pololu.com/product/3754>

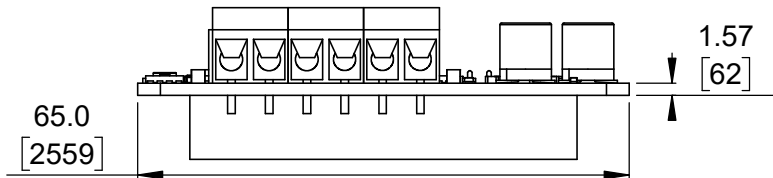
Name: Pololu Dual G2 High-Power Motor Driver for Raspberry Pi (Partial Kit)		Item number: 3754, 3756
Drawing date: 17 November 2017	Dev code: rpe03a	 Pololu Robotics & Electronics © 2017 Pololu Corporation
Units: mm [mil]	Material: mixed	



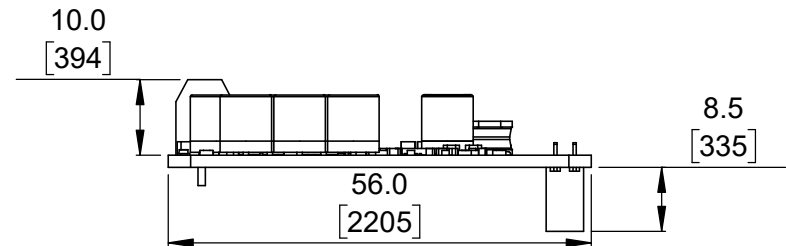
① Top view (actual size)
(with included through-hole components)
Scale 1:1



② Isometric view
(with included through-hole components)
Scale 4:5




③ Long profile
(with included through hole components)
Scale 1:1

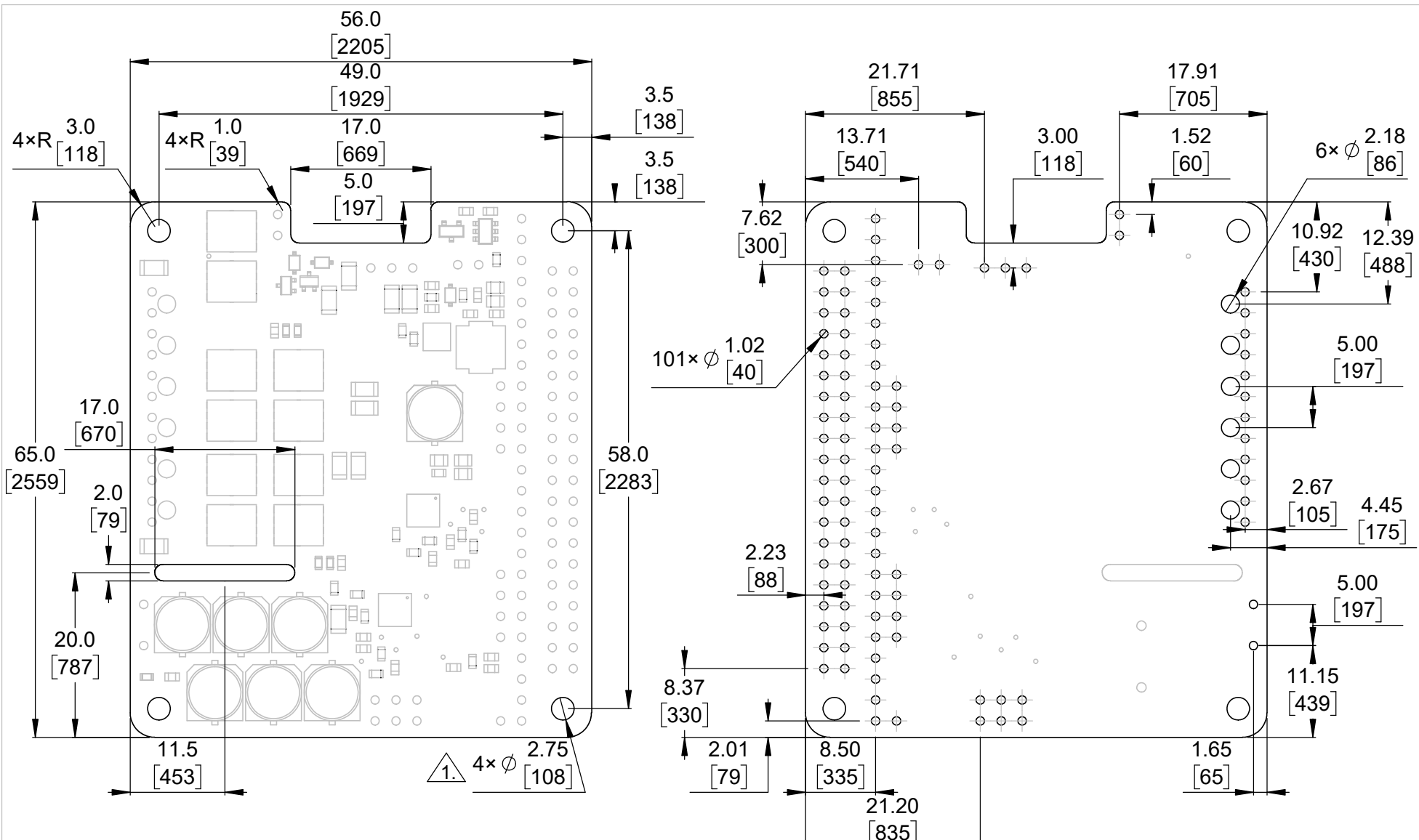


④ Short profile
(with included through-hole components)
Scale 1:1

1. To get the specified scale, select 100% in print settings.
2. Drill location tolerance: ± 0.1 [± 5].
3. Board edge tolerance: ± 0.3 [± 10].

<https://www.pololu.com/product/3754>

Name: Pololu Dual G2 High-Power Motor Driver for Raspberry Pi (Partial Kit)		Item number: 3754, 3756
Drawing date: 17 November 2017	Dev code: rpe03a	 © 2017 Pololu Corporation
Units: mm [mil]	Material: mixed	



1 Board dimensions (top view)
Scale 3:2

2 Connector callouts (bottom view)
Scale 3:2

1. Intended for M2.5 screws.
2. Grid lines indicate 2.54mm [100 mil] spacing.
3. To get the specified scale, select 100% in print settings.
4. Drill location tolerance: ±0.1 [±5].
5. Board edge tolerance: ±0.3 [±10].

https://www.pololu.com/product/3754	
Name: Pololu Dual G2 High-Power Motor Driver for Raspberry Pi (Partial Kit)	Item number: 3754, 3756
Drawing date: 17 November 2017	Dev code: rpe03a
Units: mm [mil]	Material: mixed

