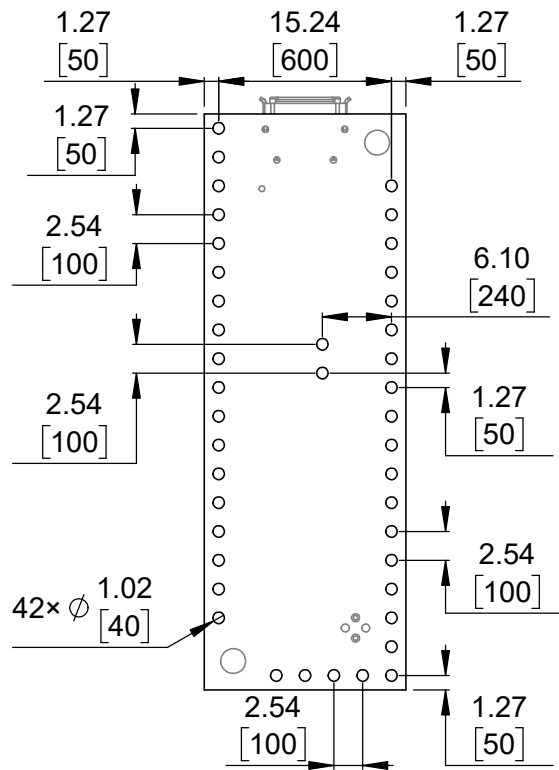
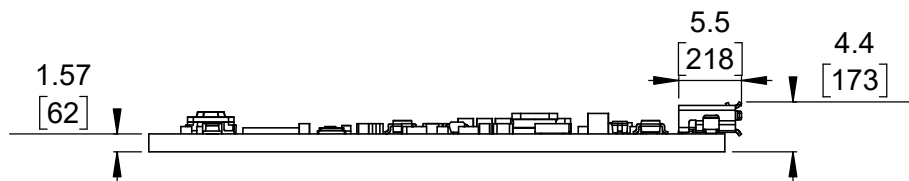


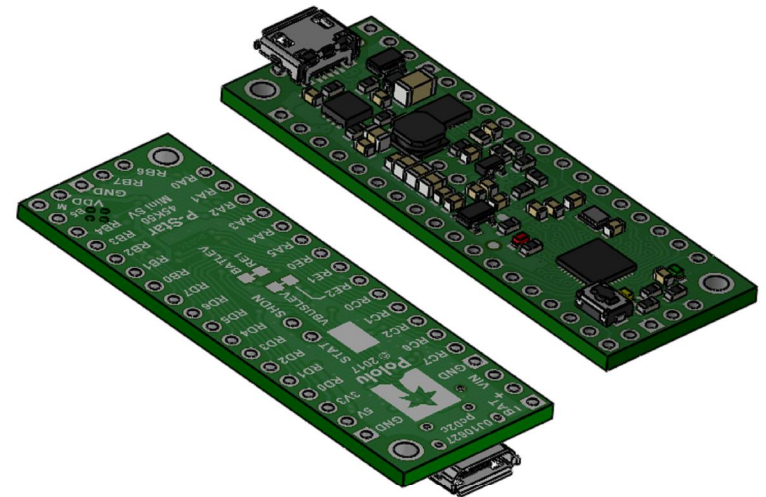
① Board dimensions (top view)
Scale 3:2



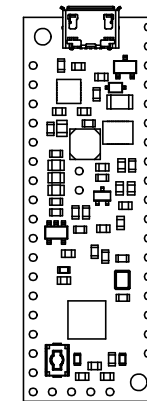
② Connector callouts (bottom view)
Scale 3:2



④ Profile
Scale 3:2




③ Isometric view
Scale 3:2



⑤ Actual size
Scale 1:1

1. To get the specified scale, select 100% in print settings.
2. Drill location tolerance: ± 0.1 [± 5].
3. Board edge tolerance: ± 0.3 [± 10].

<https://www.pololu.com/product/3156>

Name: P-Star 45K50 Mini SV		Item number: 3156
Drawing date: 9 November 2017	Dev code: pc02c	 © 2017 Pololu Corporation
Units: mm [mil]	Material: mixed	