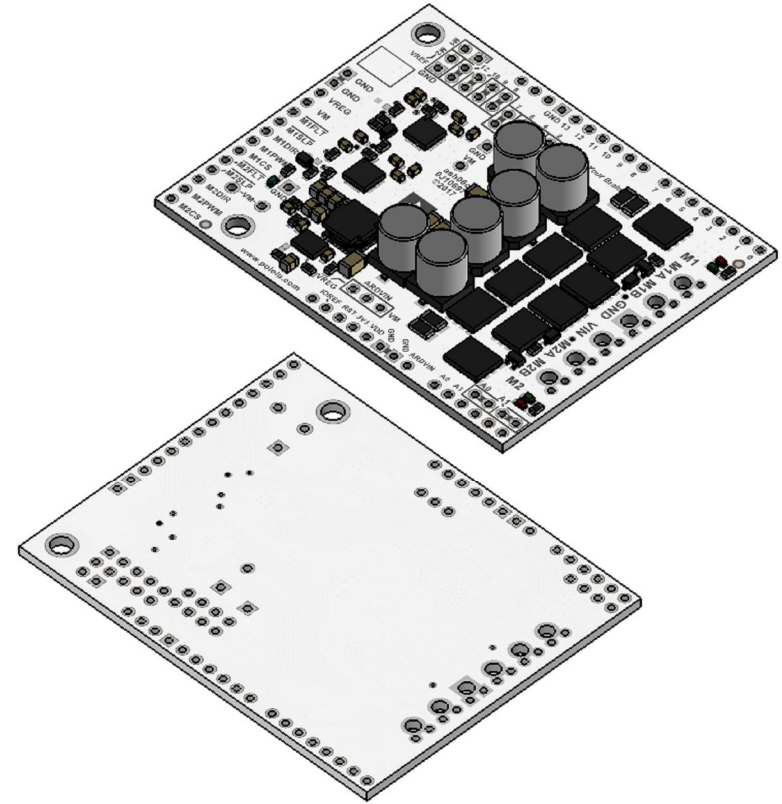
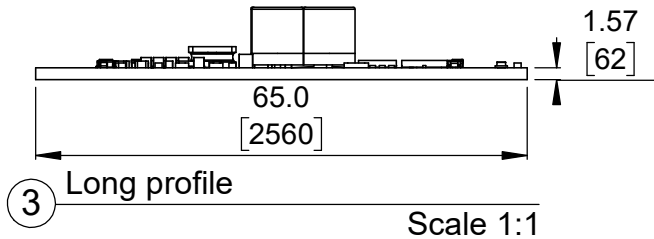


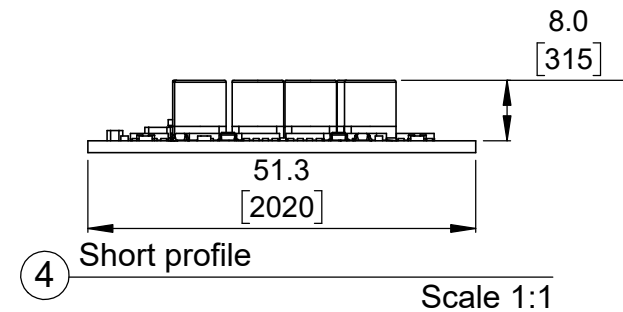
① Top view (actual size)  
Scale 1:1



② Isometric view  
Scale 4:5




③ Long profile  
Scale 1:1

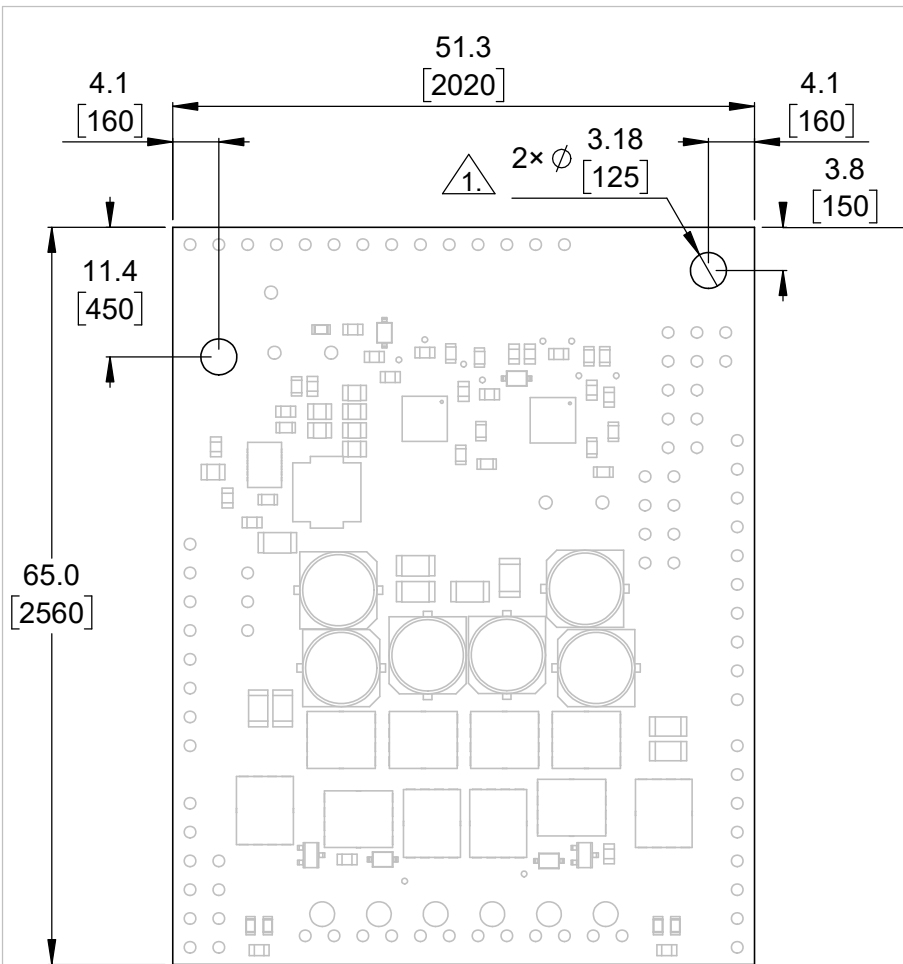


④ Short profile  
Scale 1:1

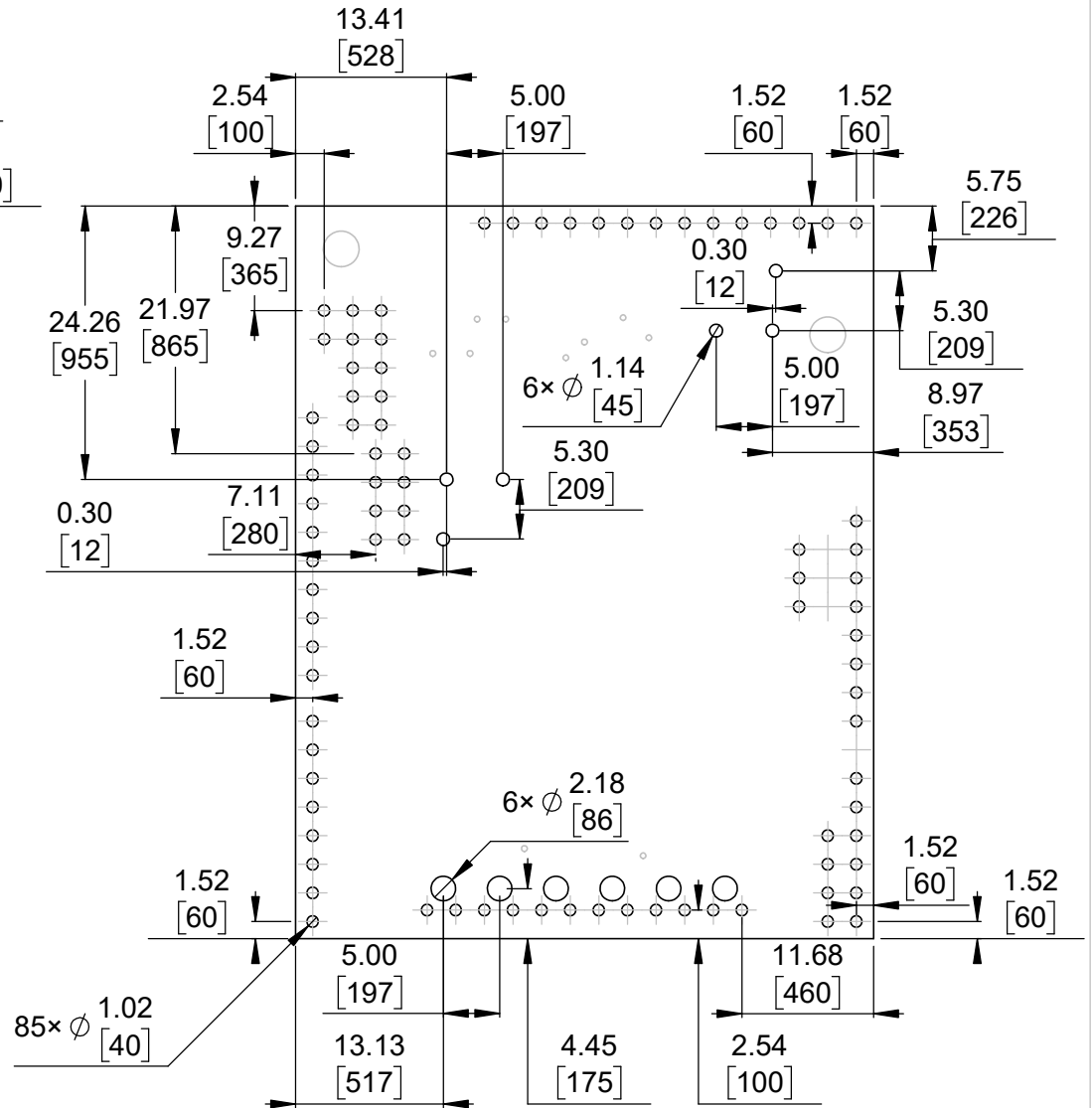
1. To get the specified scale, select 100% in print settings.
2. Drill location tolerance:  $\pm 0.1$  [ $\pm 5$ ].
3. Board edge tolerance:  $\pm 0.3$  [ $\pm 10$ ].

<https://www.pololu.com/product/2517>

Name: Pololu Dual G2 High-Power Motor Driver 18v22 or 24v18 Shield for Arduino		Item number: 2517, 2518
Drawing date: 8 November 2017	Dev code: ash06c	 © 2017 Pololu Corporation
Units: mm [mil]	Material: mixed	




1 Board dimensions (top view)  
Scale 3:2



2 Connector callouts (bottom view)  
Scale 3:2

1. Intended for M3 or #4-40 screws.
2. Grid lines indicate 2.54mm [100 mil] spacing.
3. To get the specified scale, select 100% in print settings.
4. Drill location tolerance:  $\pm 0.1$  [ $\pm 5$ ].
5. Board edge tolerance:  $\pm 0.3$  [ $\pm 10$ ].

<https://www.pololu.com/product/2517>

Name: Pololu Dual G2 High-Power Motor Driver 18v22 or 24v18 Shield for Arduino		Item number: 2517, 2518
Drawing date: 8 November 2017	Dev code: ash06c	 © 2017 Pololu Corporation
Units: mm [mil]	Material: mixed	