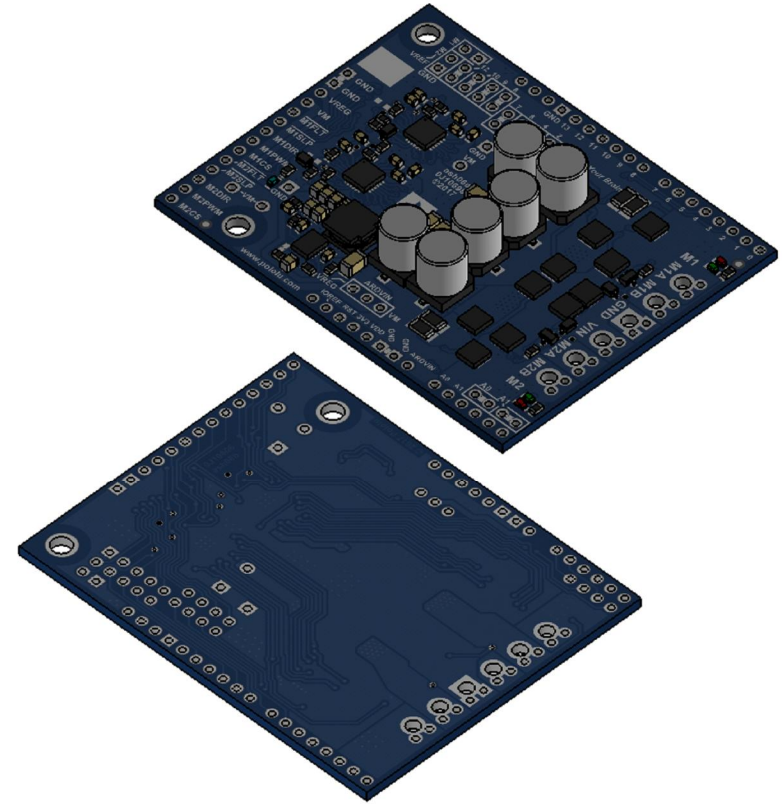
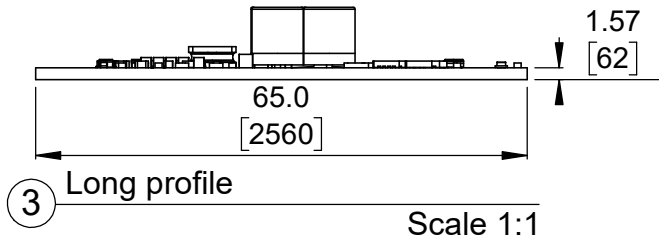
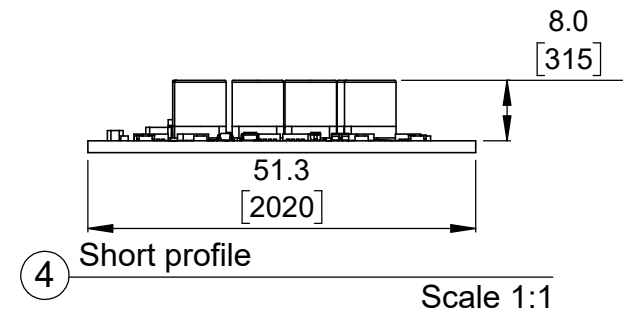


① Top view (actual size)
Scale 1:1




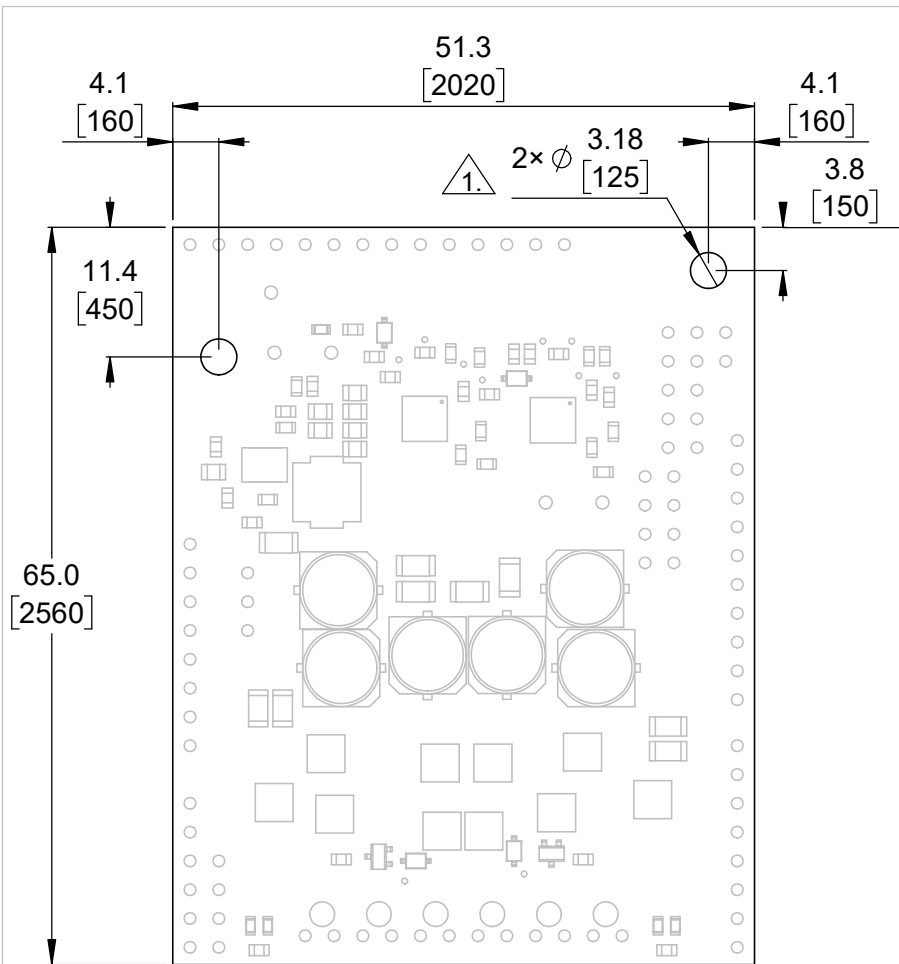
② Isometric view
Scale 4:5



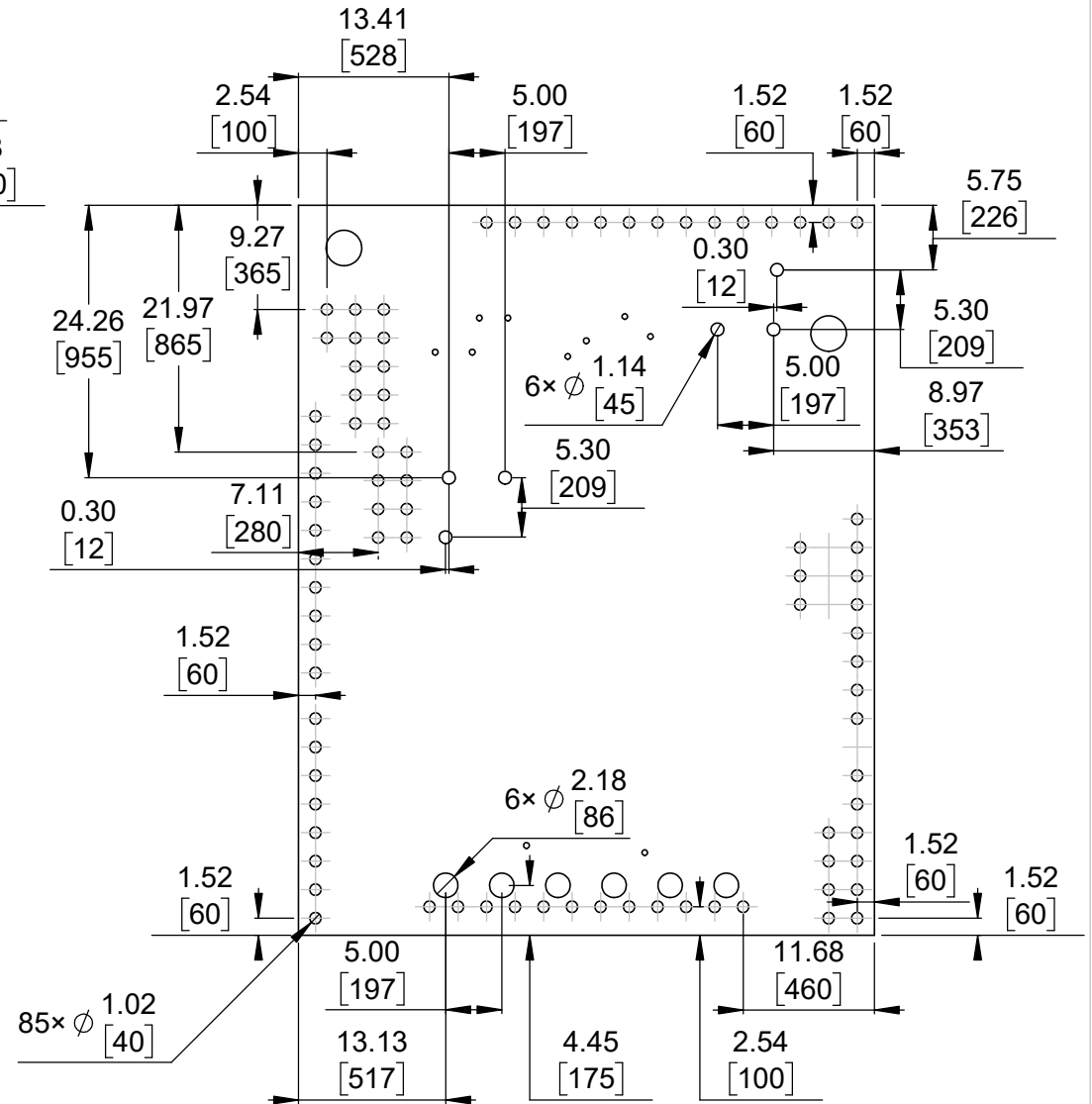
1. To get the specified scale, select 100% in print settings.
2. Drill location tolerance: ± 0.1 [± 5].
3. Board edge tolerance: ± 0.3 [± 10].

<https://www.pololu.com/product/2515>

Name: Pololu Dual G2 High-Power Motor Driver 18v18 or 24v14 Shield for Arduino		Item number: 2515, 2516
Drawing date: 3 November 2017	Dev code: ash06d	 Pololu Robotics & Electronics © 2017 Pololu Corporation
Units: mm [mil]	Material: mixed	




① Board dimensions (top view)
Scale 3:2



② Connector callouts (bottom view)
Scale 3:2

1. Intended for M3 or #4-40 screws.
2. Grid lines indicate 2.54mm [100 mil] spacing.
3. To get the specified scale, select 100% in print settings.
4. Drill location tolerance: ± 0.1 [± 5].
5. Board edge tolerance: ± 0.3 [± 10].

<https://www.pololu.com/product/2515>

Name: Pololu Dual G2 High-Power Motor Driver 18v18 or 24v14 Shield for Arduino		Item number: 2515, 2516
Drawing date: 3 November 2017	Dev code: ash06b	 Pololu Robotics & Electronics © 2017 Pololu Corporation
Units: mm [mil]	Material: mixed	