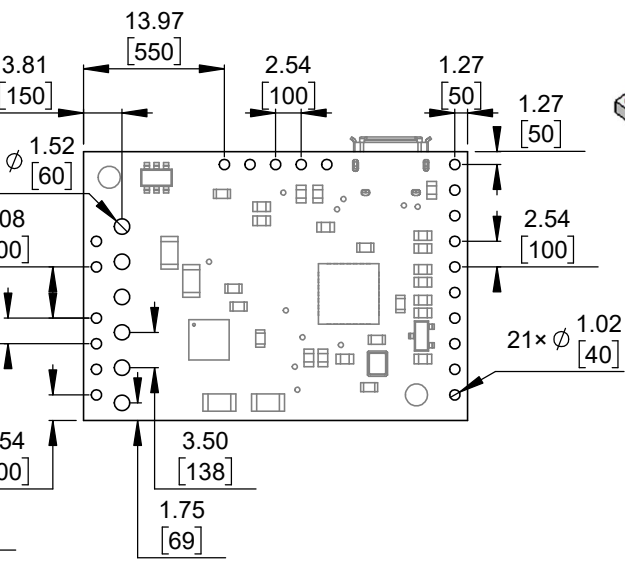
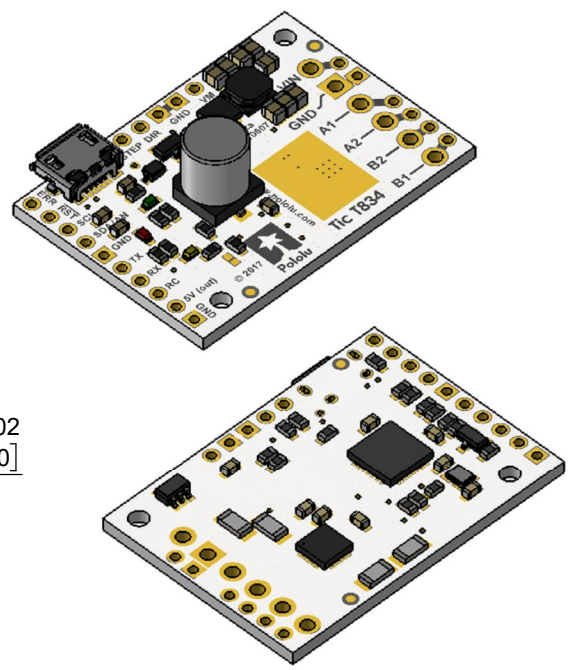


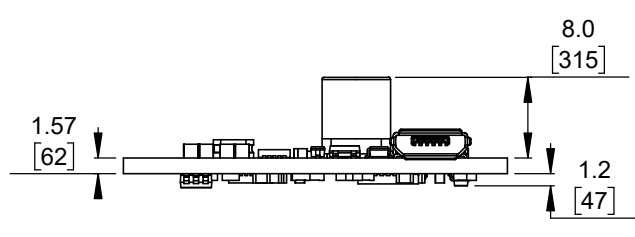
1 Board dimensions (top view)
Scale 4:3



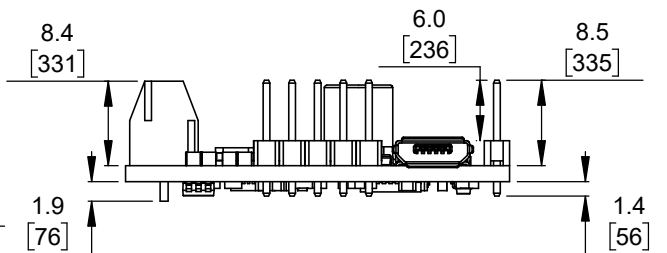
2 Connector callouts (bottom view)
Scale 4:3



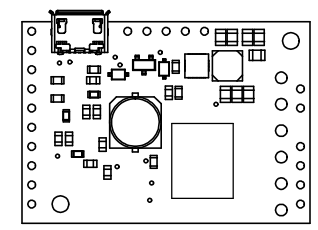
3 Isometric view
Scale 4:3



4 Profile
Scale 4:3



5 Profile (with through-hole connectors)
Scale 4:3



6 Actual size
Scale 1:1

1. To get the specified scale, select 100% in print settings.
2. Drill location tolerance: ± 0.1 [± 5].
3. Board edge tolerance: ± 0.3 [± 10].

| | |
|---|----------------------------|
| https://www.pololu.com/product/3132 | |
| Name: Tic T834 USB Multi-Interface Stepper Motor Controller | Item number: 3132, 3133 |
| Drawing date: 13 October 2017 | Dev code: tic02a |
| Units: mm [mil] | Material: mixed |

