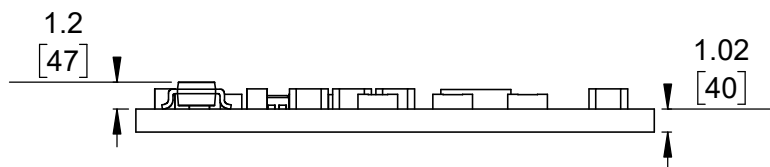


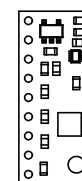
1 Board dimensions (top view)
Scale 3:1

2 Connector callouts (bottom view)
Scale 3:1

3 Isometric view
Scale 3:1




4 Profile
Scale 3:1



5 Actual size
Scale 1:1

- 1. Intended for #2 or M2 screws.
- 2. To get the specified scale, select 100% in print settings.
- 3. Drill location tolerance: ± 0.1 [± 5].
- 4. Board edge tolerance: ± 0.3 [± 10].

<https://www.pololu.com/product/2127>

Name: LSM303D 3D Compass and Accelerometer Carrier with Voltage Regulator		Item number: 2127
Drawing date: 08 September 2017	Dev code: cmp01c	 © 2017 Pololu Corporation
Units: mm [mil]	Material: mixed	