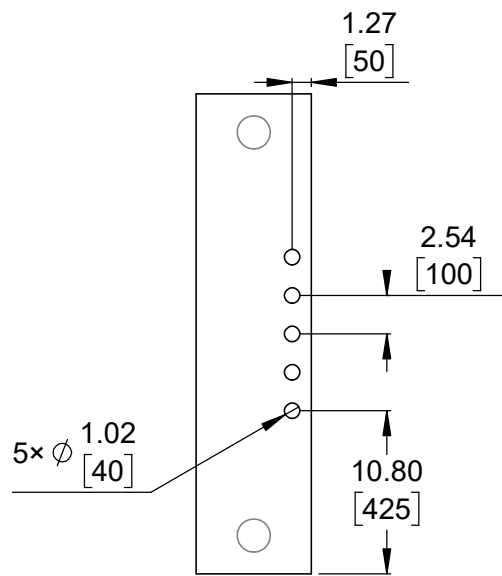
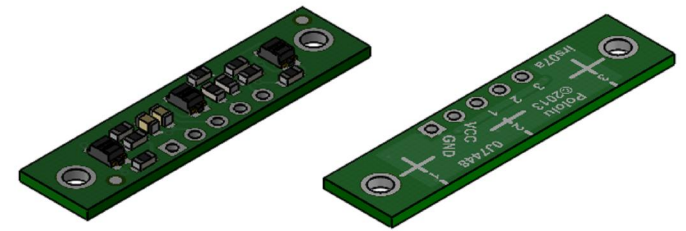


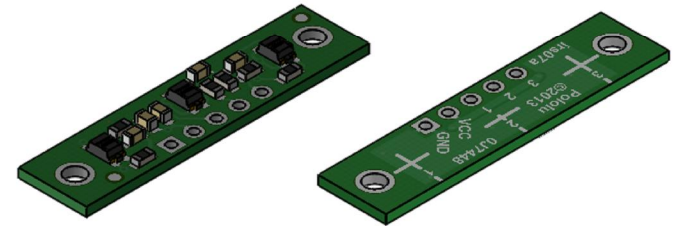
① Board dimensions (top view)
Scale 2:1



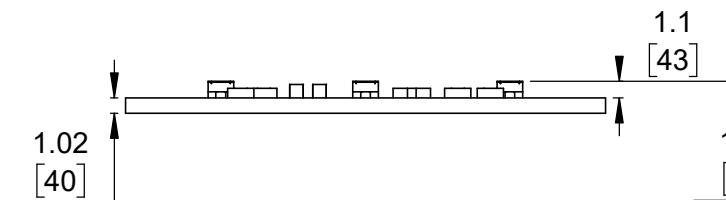
② Connector callouts (bottom view)
Scale 2:1



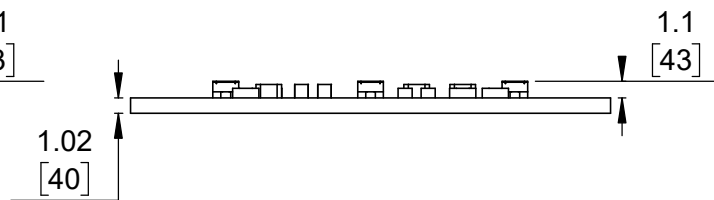
③ Isometric view (QTR-3A)
Scale 5:3



④ Isometric view (QTR-3RC)
Scale 5:3



⑤ Profile (QTR-3A)
Scale 2:1



⑥ Profile (QTR-3RC)
Scale 2:1



⑦ Actual size
Scale 1:1

- To get the specified scale, select 100% in print settings.
- Drill location tolerance: ± 0.1 [± 5].
- Board edge tolerance: ± 0.3 [± 10].

<https://www.pololu.com/product/2456>

Name: QTR-3x Reflectance Sensor Array		Item number: 2456, 2457	
Drawing date: 19 June 2017		Dev code: irs07a	
Units: mm [mil]		Material: mixed	

