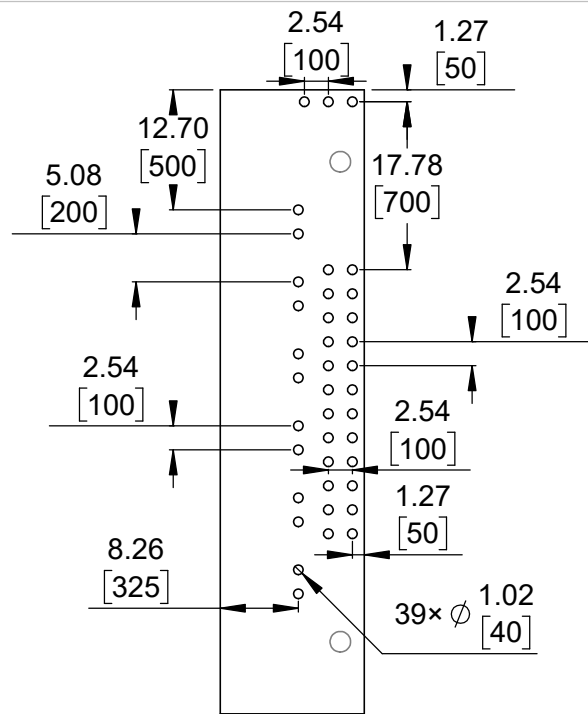


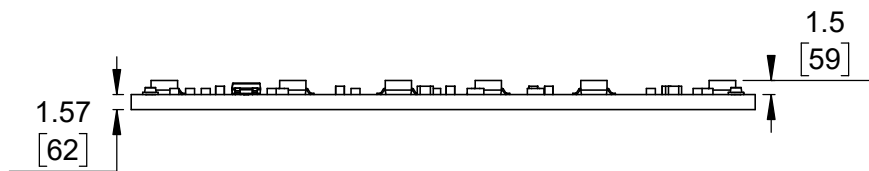
1 Board dimensions (top view)  
Scale 5:4



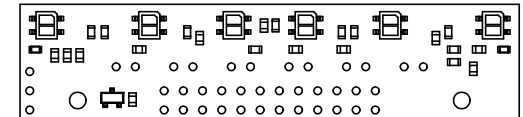
2 Connector callouts (bottom view)  
Scale 5:4



3 Isometric view  
Scale 1:1



4 Profile  
Scale 5:4



5 Actual size  
Scale 1:1

1. To get the specified scale, select 100% in print settings.
2. Drill location tolerance:  $\pm 0.1$  [ $\pm 5$ ].
3. Board edge tolerance:  $\pm 0.3$  [ $\pm 10$ ].

<https://www.pololu.com/product/1419>

Name: Zumo Reflectance Sensor Array		Item number: 1419	
Drawing date: 19 June 2017		Dev code: irs04a	
Units: mm [mil]	Material: mixed		

