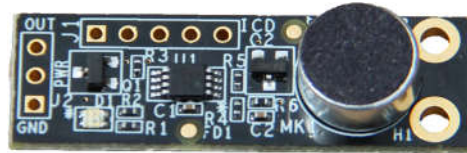


VM-Clap1 Hand Clap Sensor Hookup Guide

Rev 1.0

VM-Clap1 Overview

The VM-Clap1 is a low cost, low power, microprocessor based hand clap sensor which will ignore background noises such as human speech or music and will only react to hand clapping or finger snapping. Once a detection is made, it will momentarily light up its blue LED and change its output from the normally open collector output to GND. This enables you to easily connect this sensor to your board.



The VM-CLAP1 Hand Clap Sensor

Hooking It Up

This board only has three pins: **VCC**, **GND** and **OUT**. You can power this board from 2.5V to 5.5V. **OUT** is a powerful open-collector output. Some more Information about this board:

Parameter	Value
Operating Voltage	2.5-5.5 Volts
Current consumption	1.7mA @ 3V
Out pin current sinking	750mA @ 30V
Detection pulse width	40mS
Detection Range	Approx 9 ft.
Weight	2.1 Grams
Dimensions	37mm L by 12mm W by 6mm H