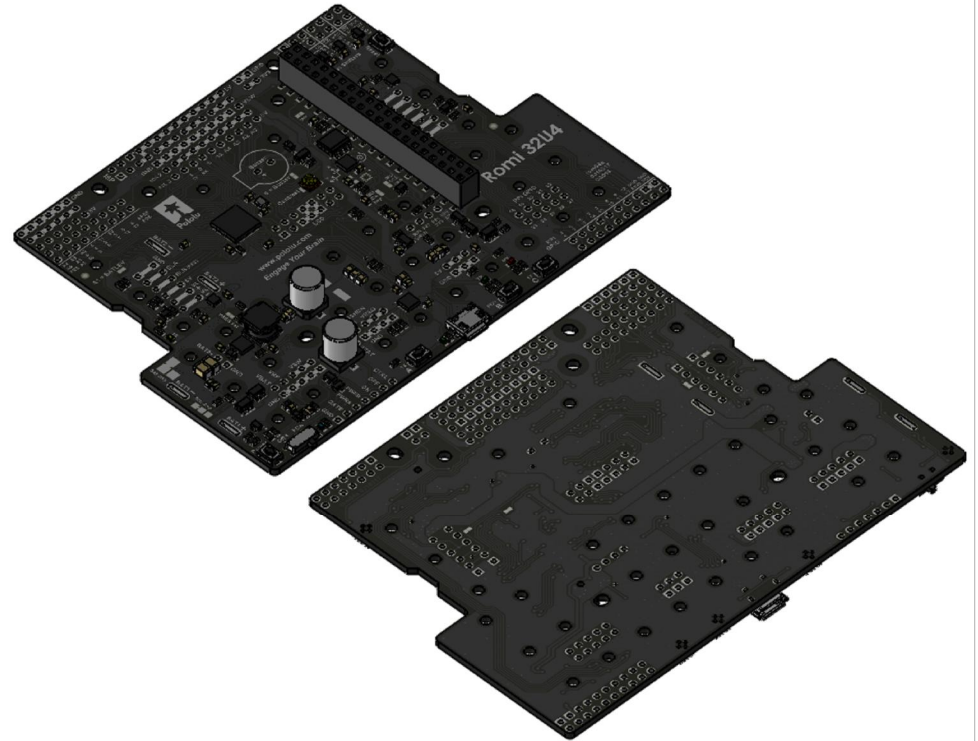
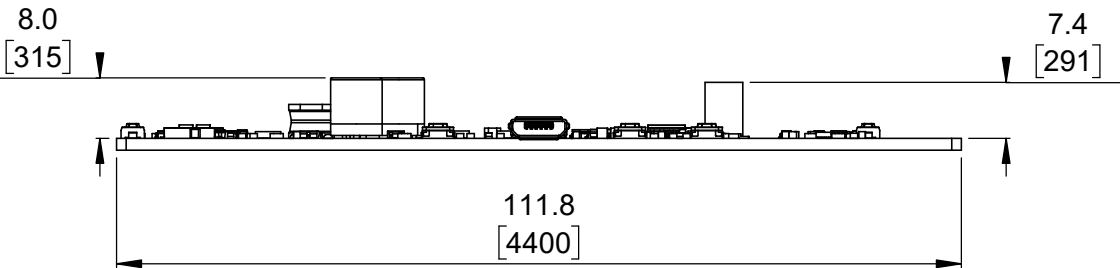


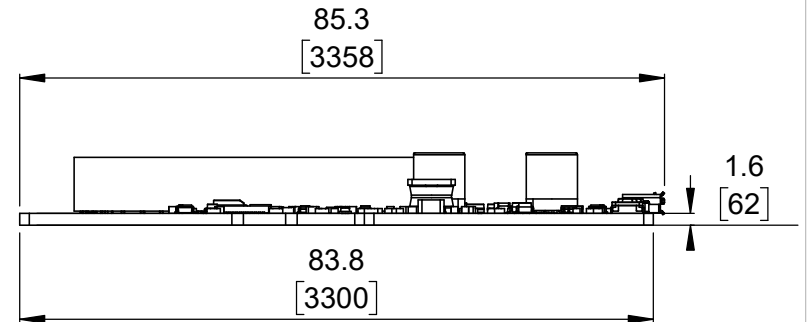
① Top view (actual size)
Scale 1:1



② Isometric view
Scale 2:3



③ Long profile
Scale 1:1

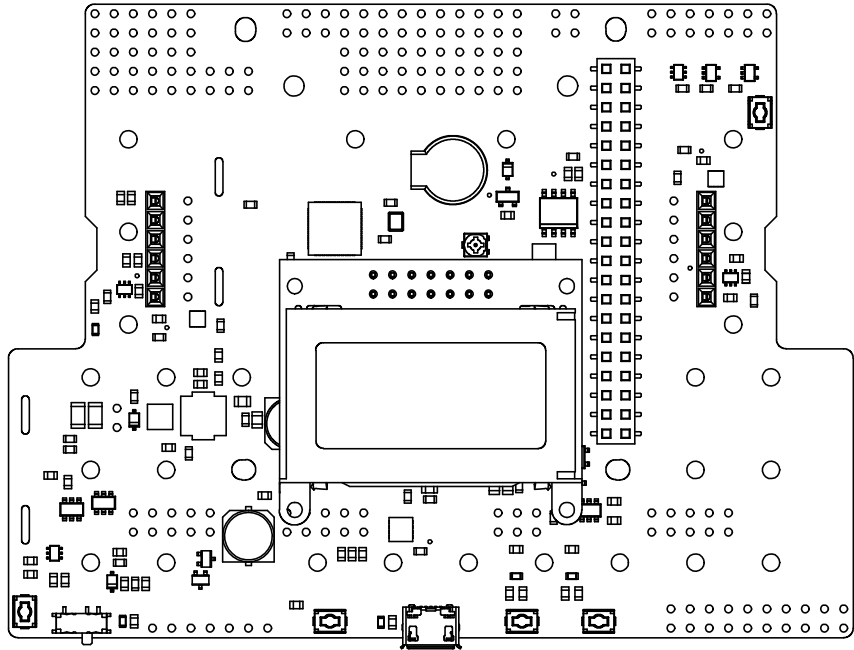


④ Short profile
Scale 1:1

1. To get the specified scale, select 100% in print settings.
2. Drill location tolerance: ± 0.1 [± 5].
3. Board edge tolerance: ± 0.3 [± 10].

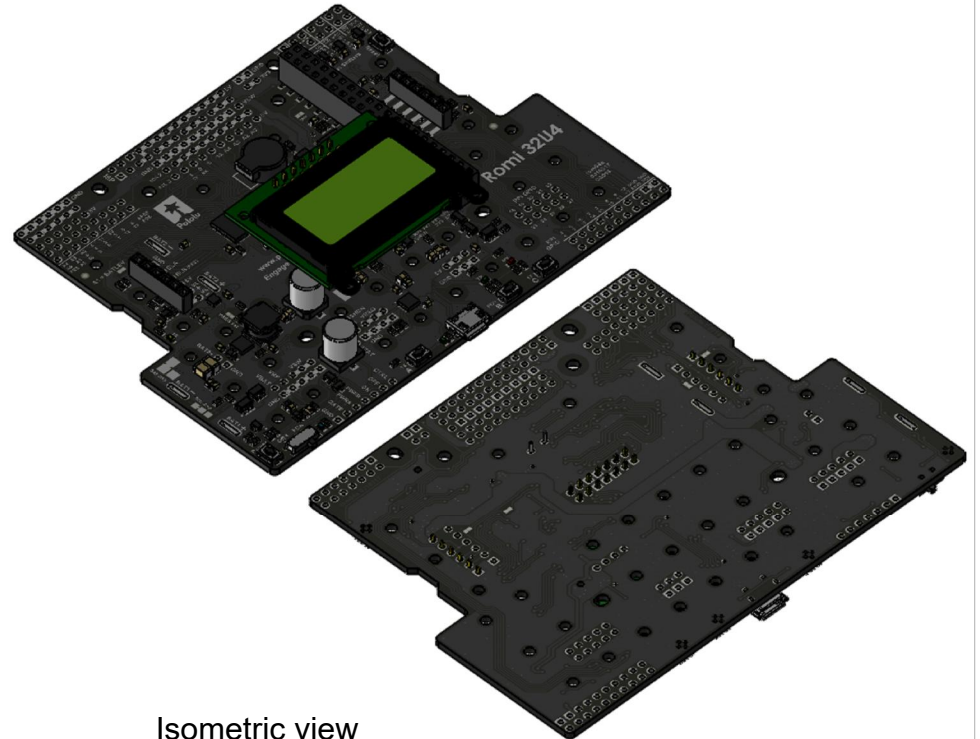
<https://www.pololu.com/product/3544>

Name: Romi 32U4 Control Board	Item number: 3544
Drawing date: 17 July 2017	 Pololu Robotics & Electronics © 2017 Pololu Corporation
Units: mm [mil]	



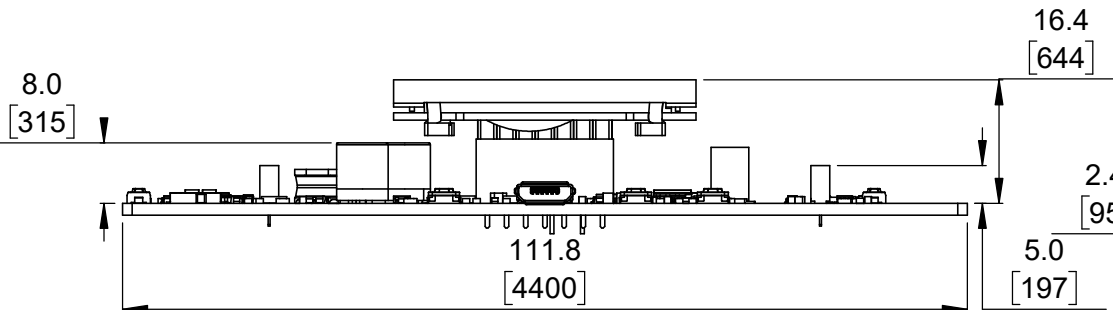
Top view (actual size)
(with optional through-hole components and LCD)

① Scale 1:1



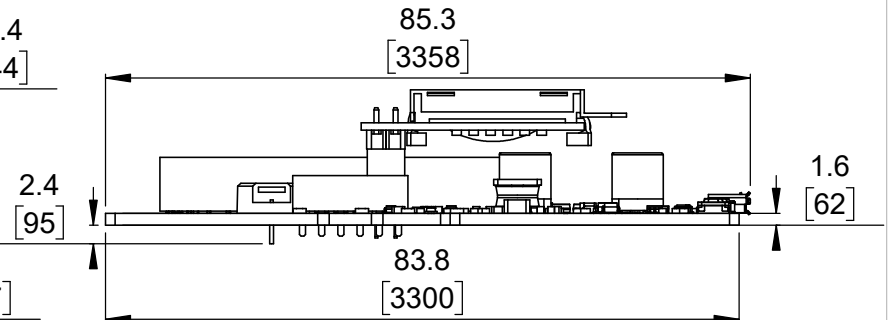
Isometric view
(with optional through-hole components and LCD)

② Scale 2:3



Long profile
(with optional through-hole components and LCD)

③ Scale 1:1



Short profile
(with optional through-hole components and LCD)

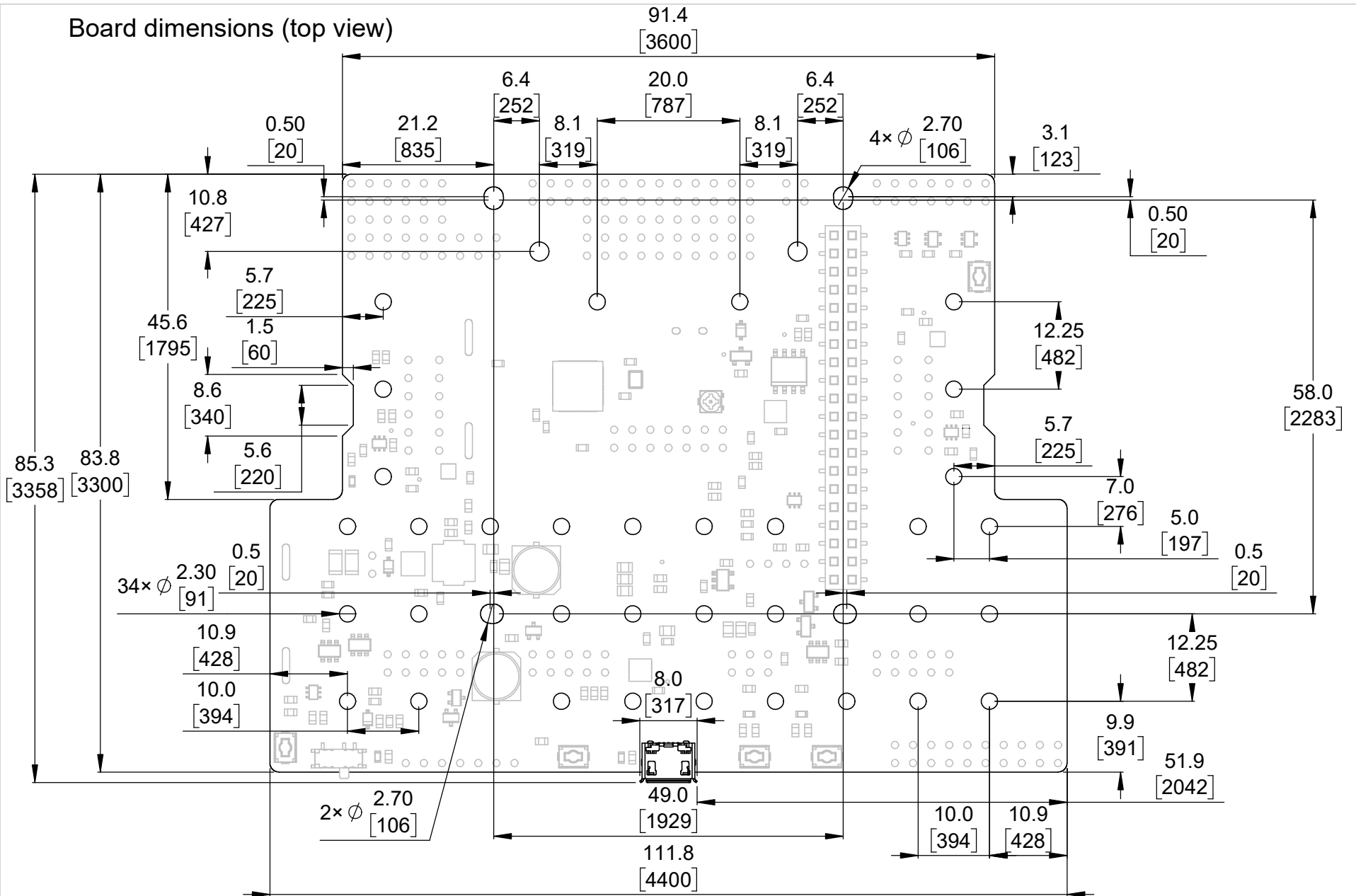
④ Scale 1:1

1. To get the specified scale, select 100% in print settings.
2. Drill location tolerance: ± 0.1 [± 5].
3. Board edge tolerance: ± 0.3 [± 10].

<https://www.pololu.com/product/3544>

Name: Romi 32U4 Control Board	Item number: 3544
Drawing date: 17 July 2017	
Units: mm [mil]	PCB dev code: rom04a
 © 2017 Pololu Corporation	

Board dimensions (top view)



1. To get the specified scale, select 100% in print settings.
2. Drill location tolerance: ± 0.1 [± 5].
3. Board edge tolerance: ± 0.3 [± 10].

Scale: 4:3

<https://www.pololu.com/product/3544>

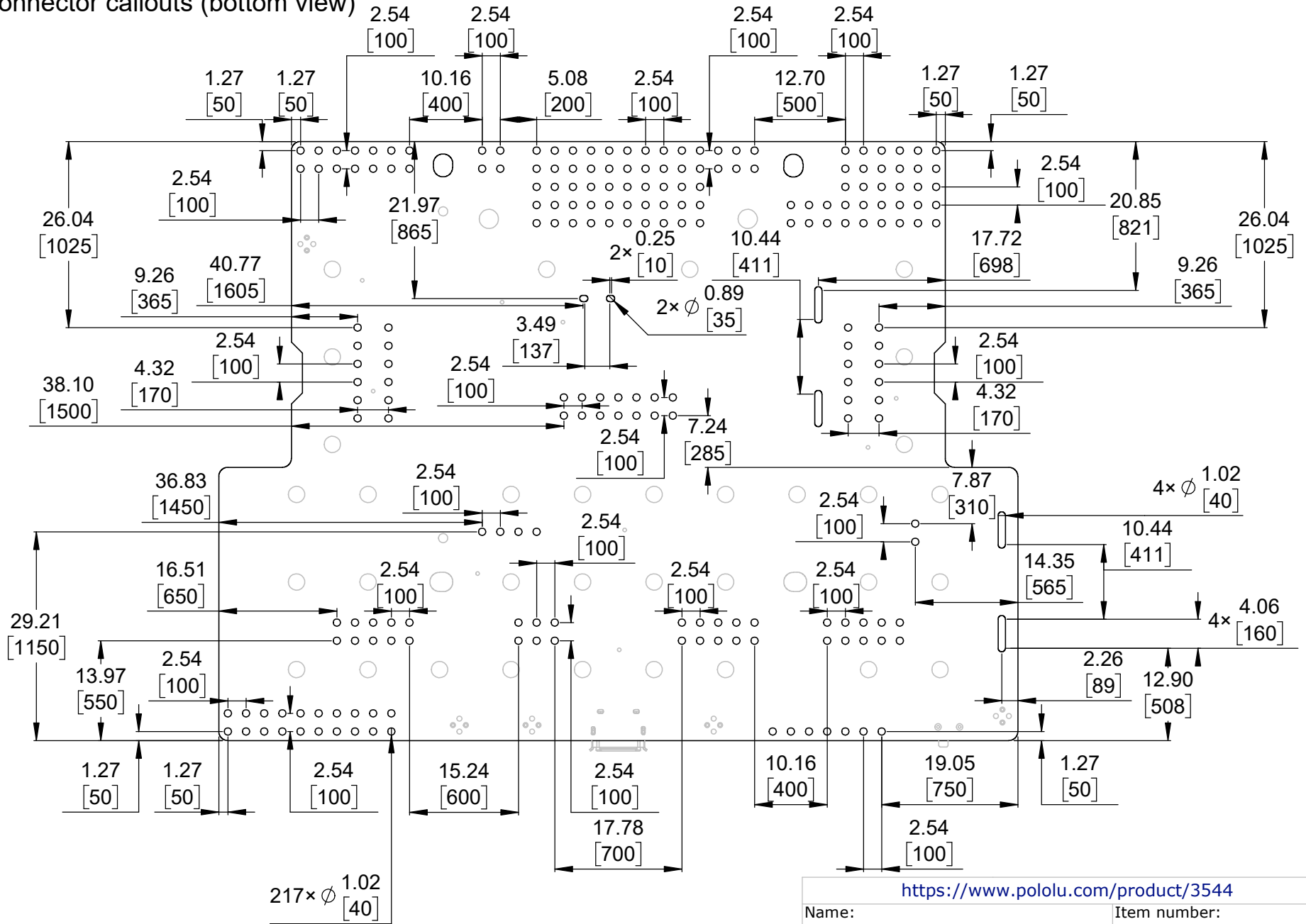
Name: Romi 32U4 Control Board
Item number: 3544

Drawing date: 17 July 2017

Units: mm [mil]
PCB dev code: rom04a

Pololu
Robotics & Electronics
© 2017 Pololu Corporation

Connector callouts (bottom view)



1. To get the specified scale, select 100% in print settings.
2. Drill location tolerance: ± 0.1 [± 5].
3. Board edge tolerance: ± 0.3 [± 10].

Scale: 4:3

<https://www.pololu.com/product/3544>

Name: Romi 32U4 Control Board		Item number: 3544
Drawing date: 17 July 2017		
Units: mm [mil]	PCB dev code: rom04a	
		© 2017 Pololu Corporation