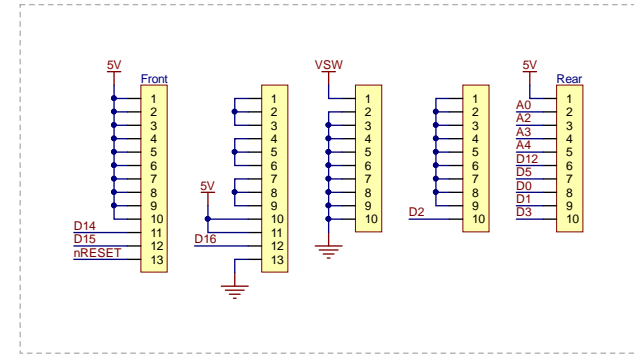
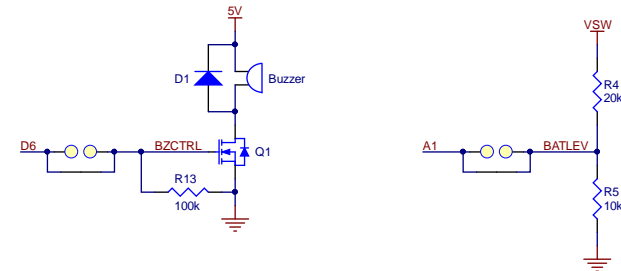
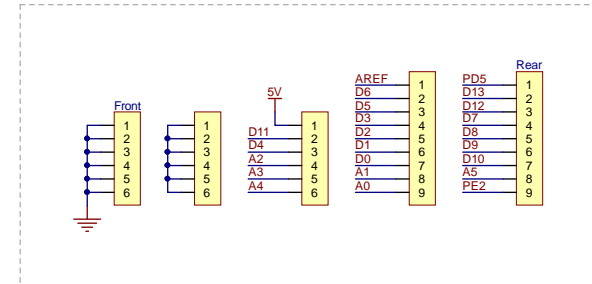


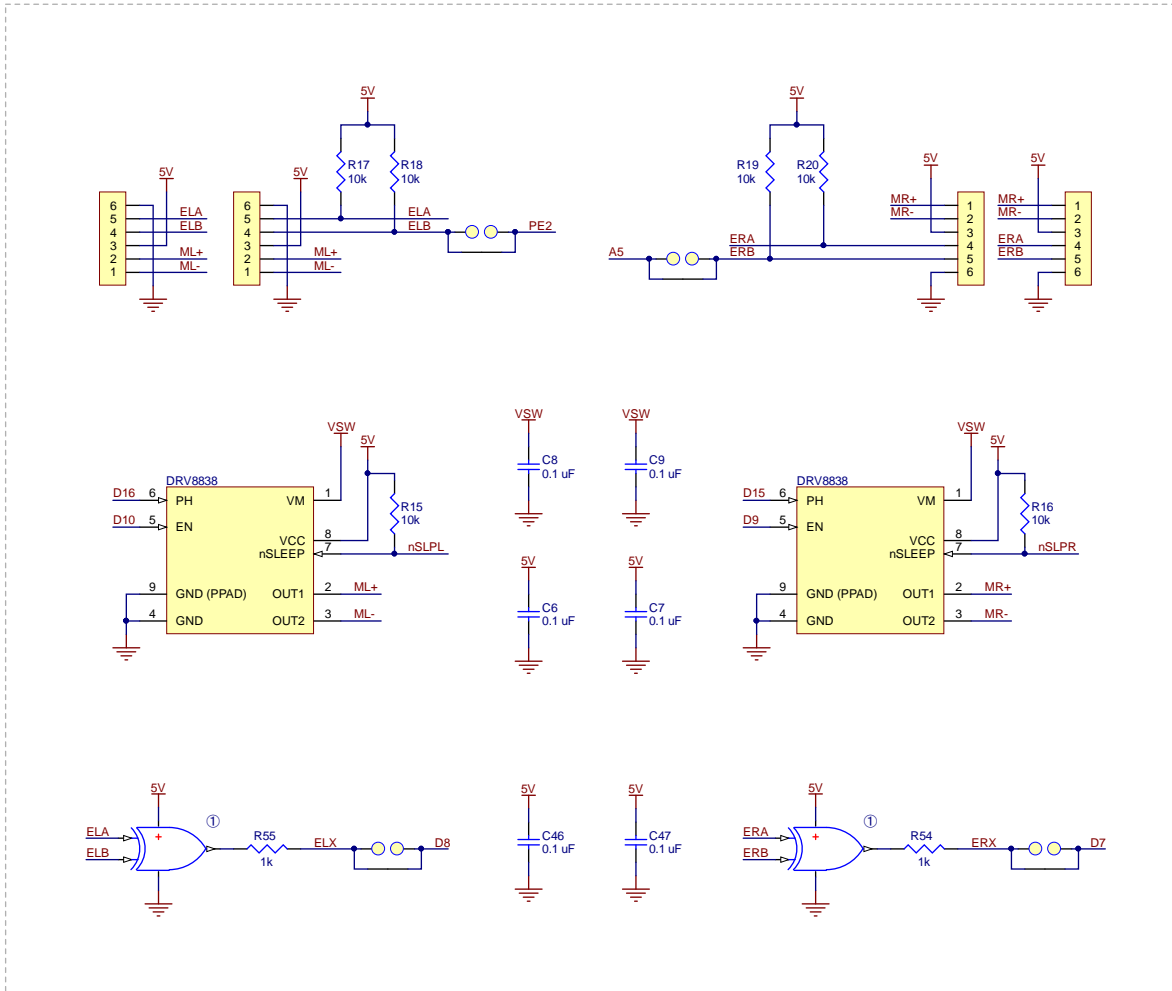
Front-center expansion area



Front-left expansion area

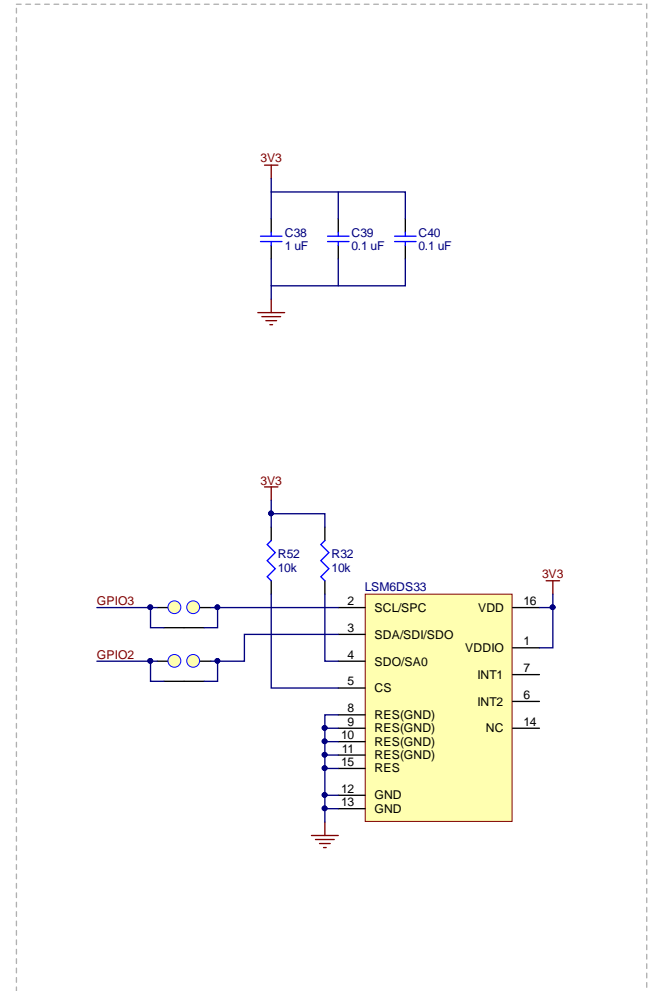


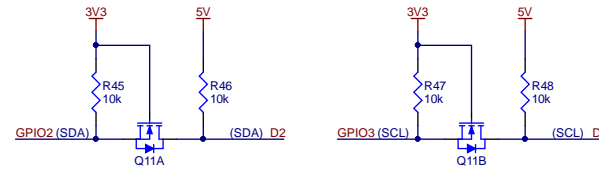
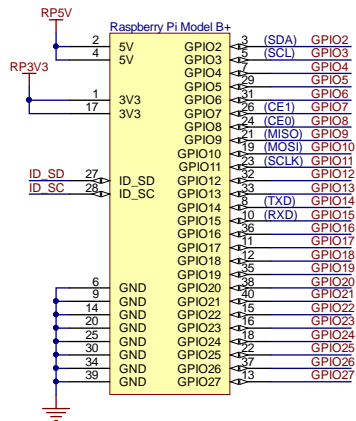
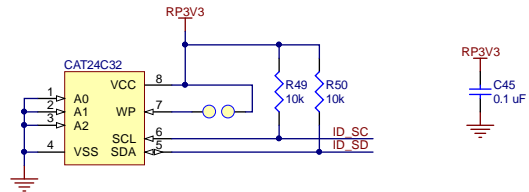
Motors and encoders



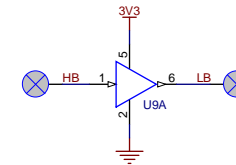
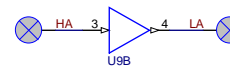
① Implemented as 74LVC1G58 multi-function gate with pin 3 tied to pin 1

Inertial sensors

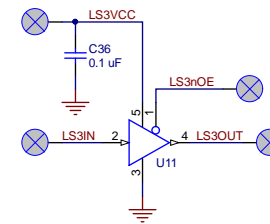
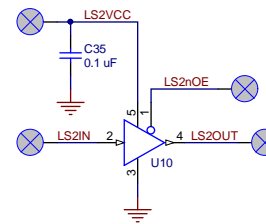




Dedicated I2C bidirectional shifters

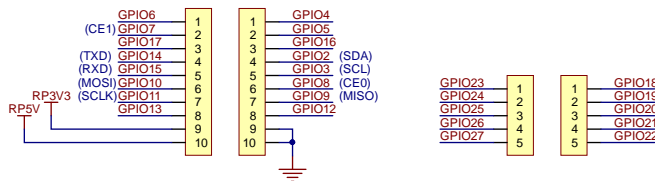


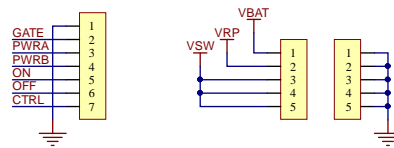
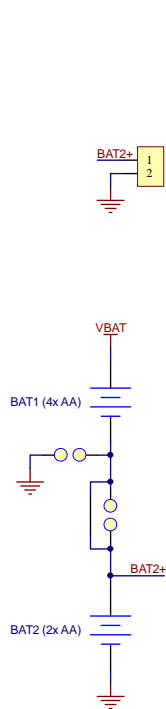
General-purpose dual unidirectional shifter



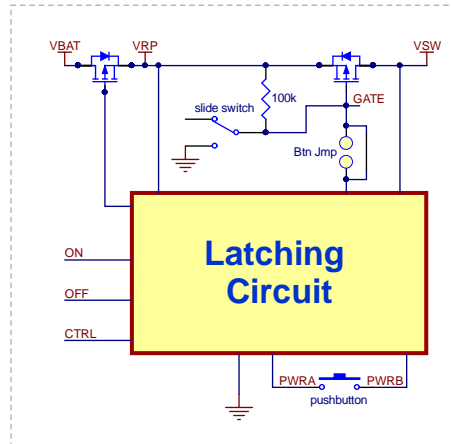
General-purpose tristatable unidirectional shifters

### Rear-right expansion area

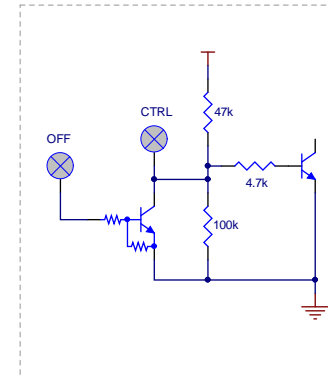




Simplified switch schematic



Input structure of OFF and CTRL inputs



Input structure of ON input

