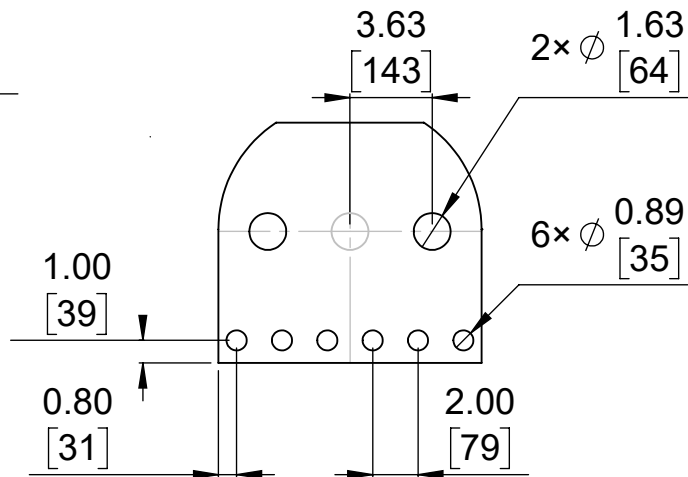
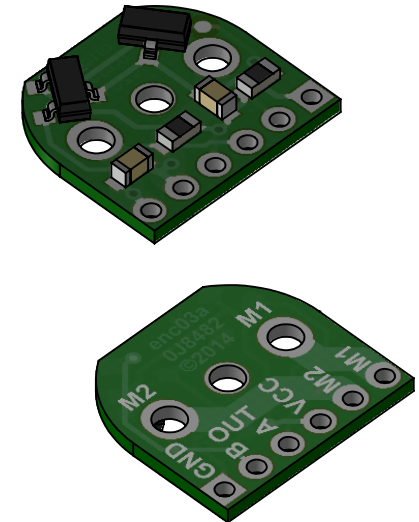


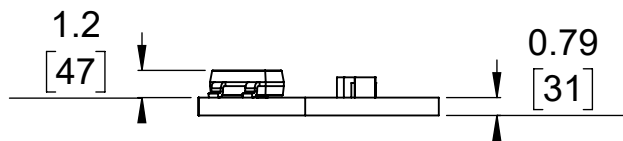
① Board dimensions (top view)
Scale 3:1



② Connector callouts (bottom view)
Scale 3:1



③ Isometric view
Scale 3:1



④ Profile
Scale 3:1



⑤ Actual size
Scale 1:1

- To get the specified scale, select 100% in print settings.
- Drill location tolerance: ± 0.1 [± 5].
- Board edge tolerance: ± 0.3 [± 10].

<https://www.pololu.com/product/2598>

Name: Magnetic Encoder Pair Kit for Micro Metal Gearmotors, 12 CPR, 2.7-18V (old version)

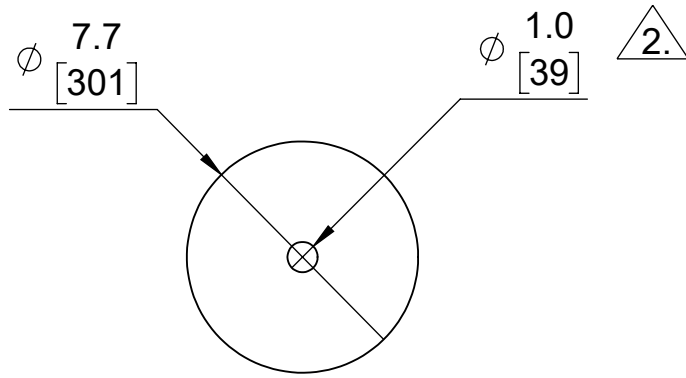
Item number:
2598

Drawing date:
17 January 2017

Units: mm
[mil]

PCB dev code:
enc03a

Pololu
Robotics & Electronics
© 2017 Pololu Corporation



① Top view
Scale 4:1



② Isometric view
Scale 4:1



③ Profile
Scale 4:1



④ Actual size
Scale 1:1

1. To get the specified scale, select 100% in print settings.



Designed to fit extended motor shaft on Pololu Micro Metal Gearmotors

<https://www.pololu.com/product/2598>

Name: Magnetic Encoder Pair Kit for Micro Metal Gearmotors, 12 CPR, 2.7-18V (old version)

Item number:
2598

Drawing date:
17 January 2017

Units: mm
[mil]

Dev code:
w1r02a


Robotics & Electronics
© 2017 Pololu Corporation