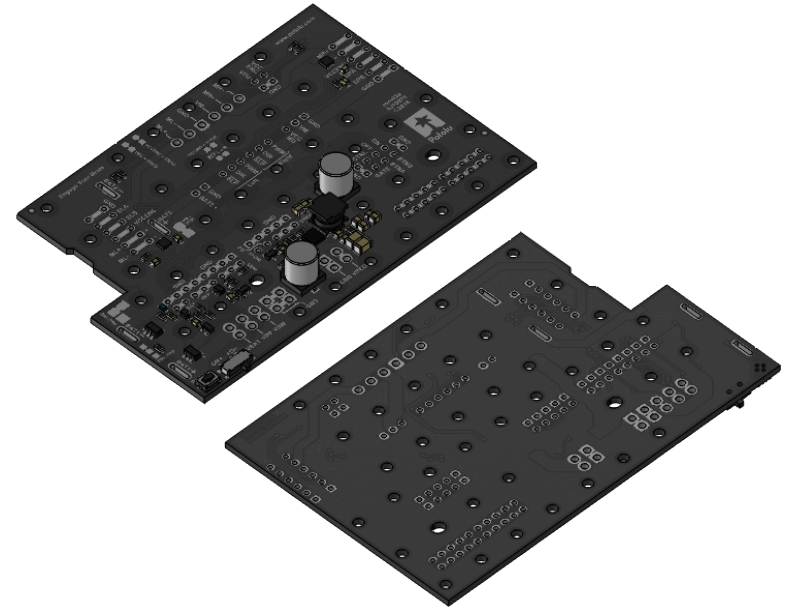
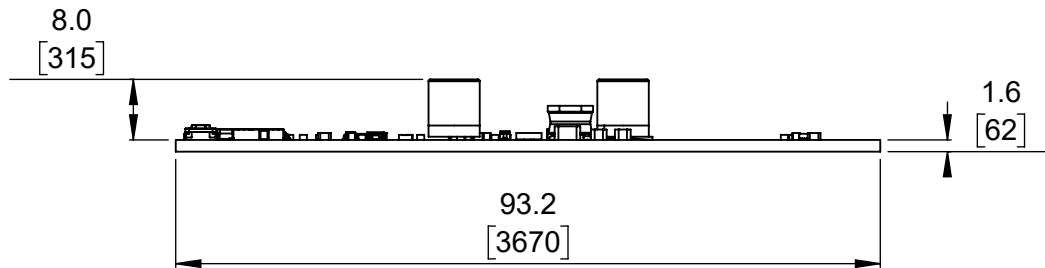


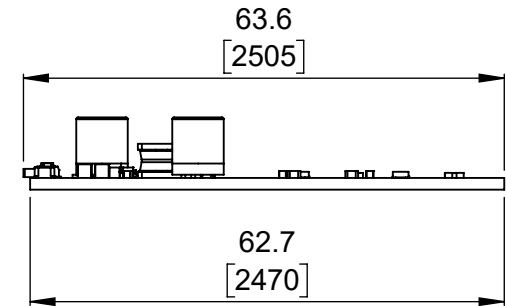
① Top view (actual size)
Scale 1:1



② Isometric view
Scale 2:3



③ Long profile
Scale 1:1



④ Short profile
Scale 1:1

1. To get the specified scale, select 100% in print settings.
2. Drill location tolerance: ± 0.1 [± 5].
3. Board edge tolerance: ± 0.3 [± 10].

<https://www.pololu.com/product/3543>

Name:
Motor Driver and Power Distribution
Board for Romi Chassis

Item number:
3543

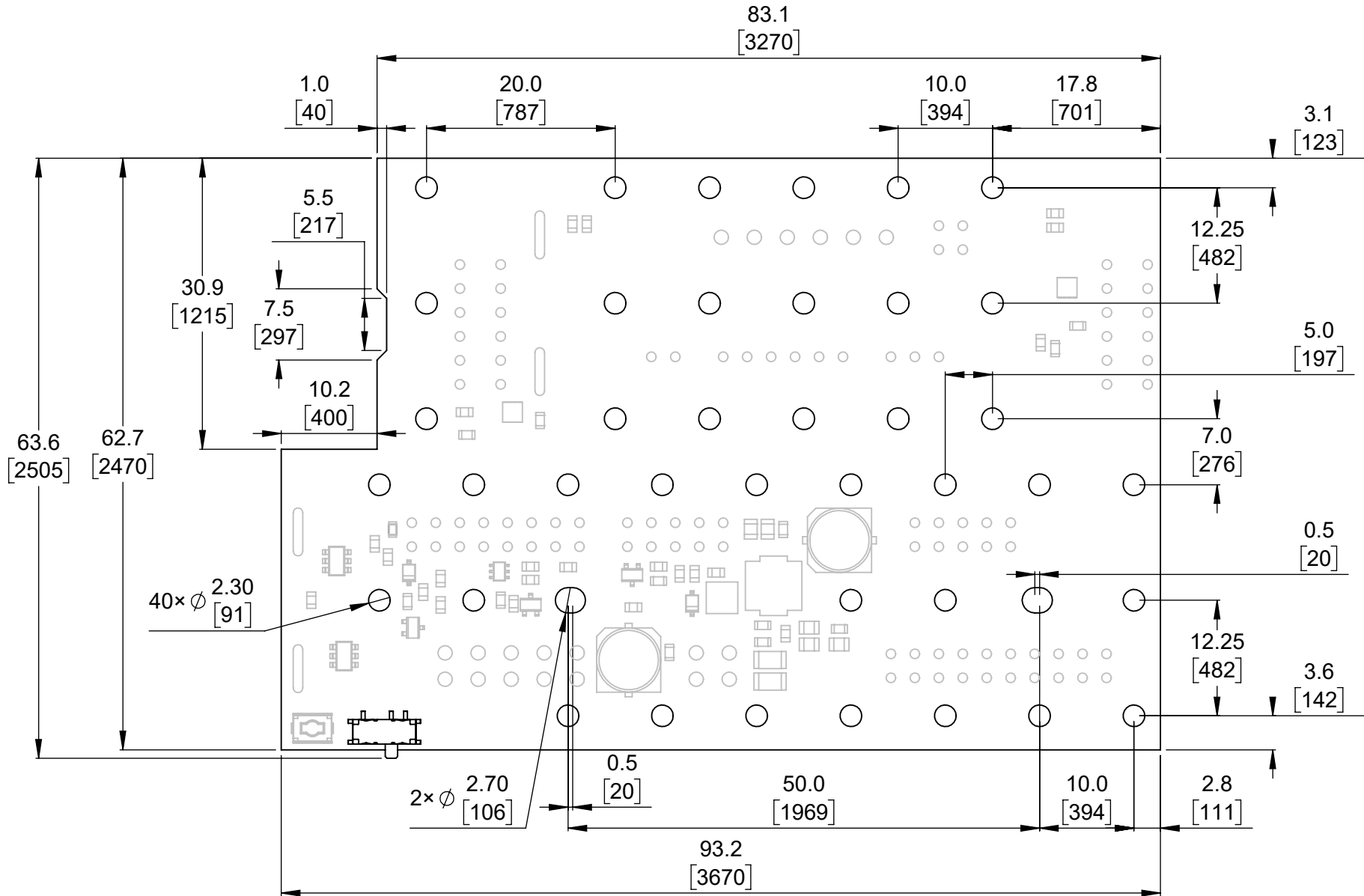
Drawing date:
27 September 2016

Units: mm
[mil]

PCB dev code:
rom02a



Board dimensions (top view)



1. To get the specified scale, select 100% in print settings.
2. Drill location tolerance: ± 0.1 [± 5].
3. Board edge tolerance: ± 0.3 [± 10].

Scale: 5:3

<https://www.pololu.com/product/3543>

Name:
Motor Driver and Power Distribution
Board for Romi Chassis

Item number:
3543

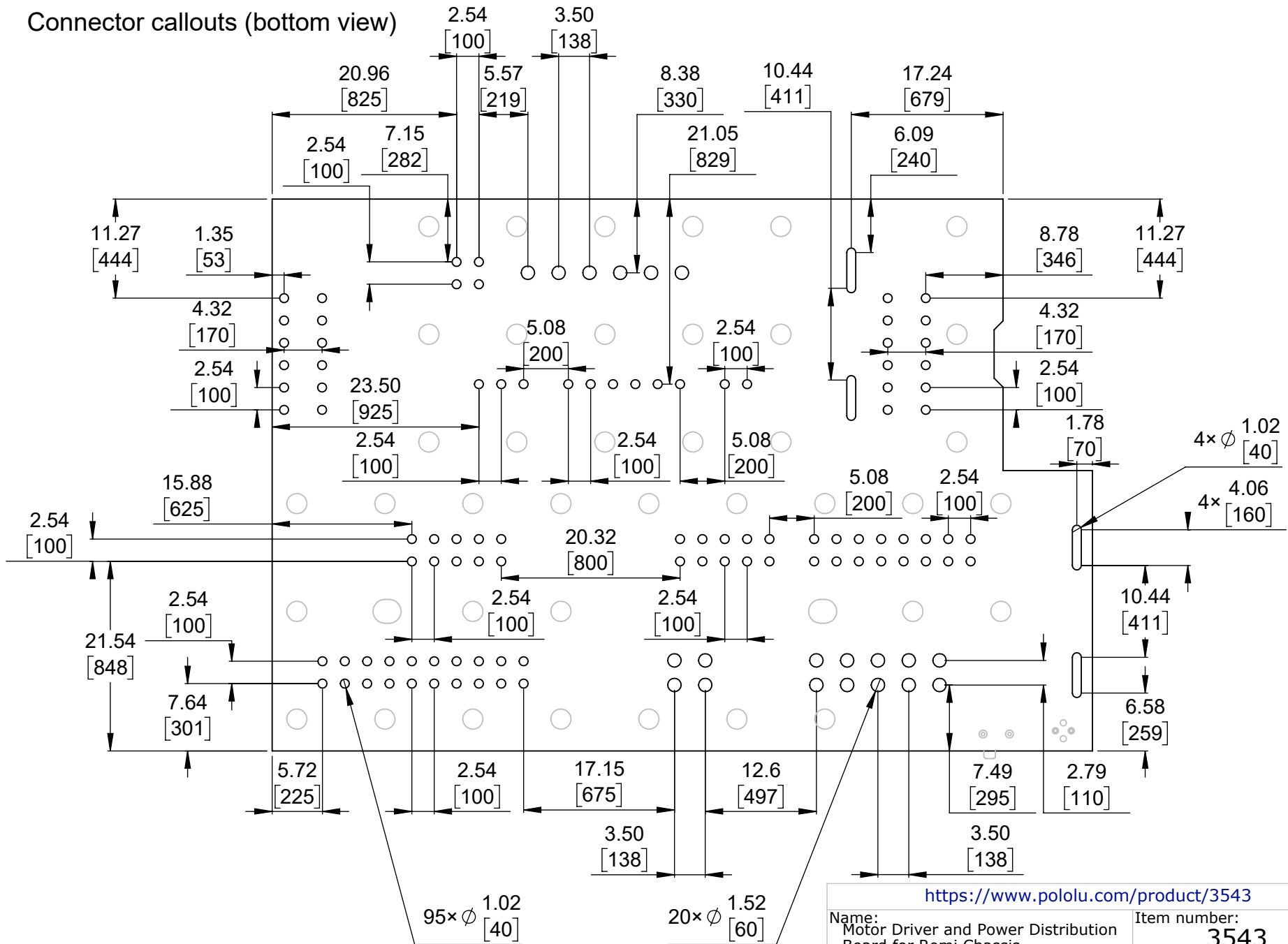
Drawing date:
27 September 2016

Units: mm
[mil]

PCB dev code:
rom02a


Pololu
Robotics & Electronics
© 2016 Pololu Corporation

Connector callouts (bottom view)



1. To get the specified scale, select 100% in print settings.
2. Drill location tolerance: ± 0.1 [± 5].
3. Board edge tolerance: ± 0.3 [± 10].

Scale: 5:3

https://www.pololu.com/product/3543	
Name: Motor Driver and Power Distribution Board for Romi Chassis	Item number: 3543
Drawing date: 27 September 2016	
Units: mm [mil]	PCB dev code: rom02a
 © 2016 Pololu Corporation	