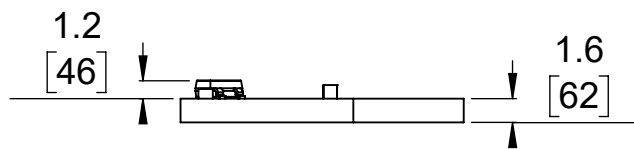


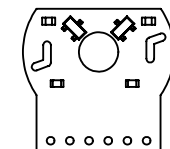
① Board dimensions (top view)
Scale 2:1

② Connector callouts (bottom view)
Scale 2:1

③ Isometric view
Scale 2:1



④ Profile
Scale 2:1



⑤ Actual size
Scale 1:1

1. To get the specified scale, select 100% in print settings.
2. Drill location tolerance: ± 0.1 [± 5].
3. Board edge tolerance: ± 0.3 [± 10].

<https://www.pololu.com/product/3542>

Name: Romi Encoder Pair Kit,
12 CPR, 3.5-18V

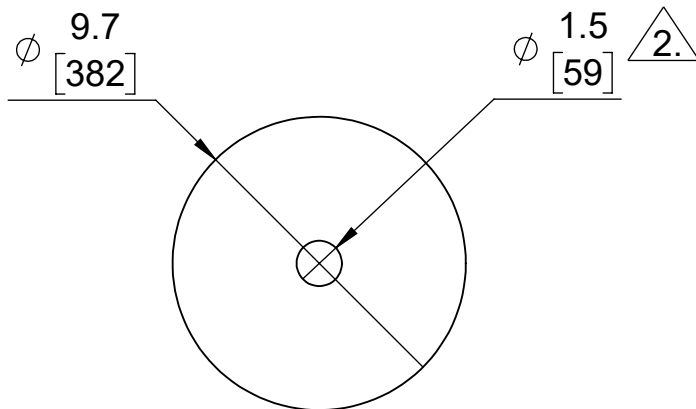
Item number:
3542

Drawing date:
3 February 2017

Units: mm
[mil]

PCB dev code:
rom03a

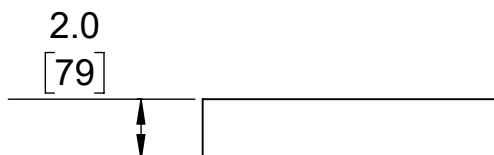
Pololu
Robotics & Electronics
© 2017 Pololu Corporation



① Top view
Scale 4:1



② Isometric view
Scale 4:1



③ Profile
Scale 4:1



④ Actual size
Scale 1:1

1. To get the specified scale, select 100% in print settings.



Designed to fit extended motor shaft on Pololu Mini Plastic Gearmotors

<https://www.pololu.com/product/3542>

Name: Romi Encoder Pair Kit,
12 CPR, 3.5-18V

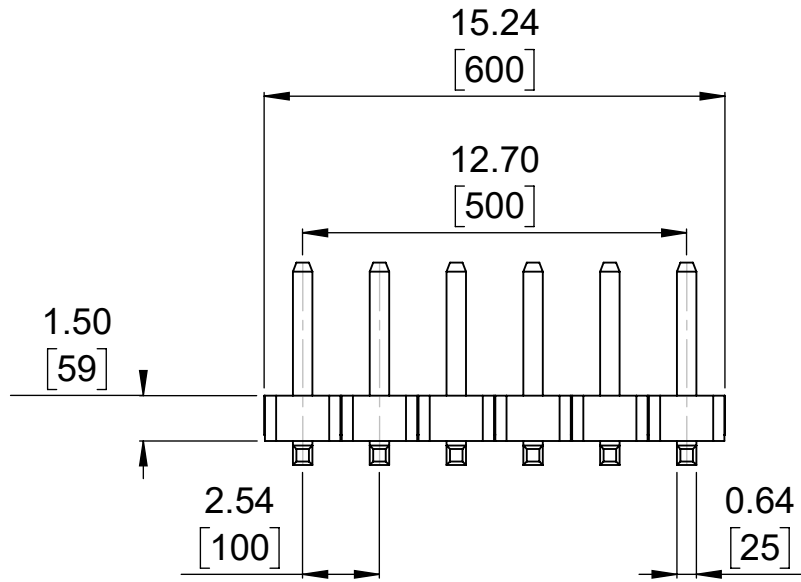
Item number:
3542

Drawing date:
3 February 2017

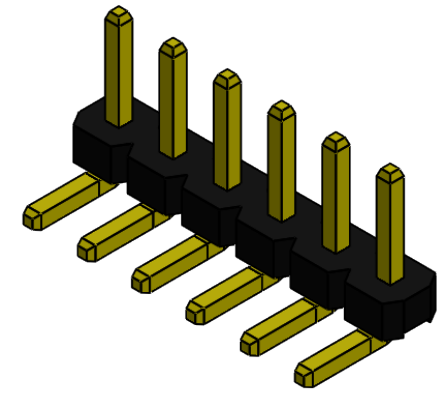
Units: mm
[mil]

Dev code:
w1r02b

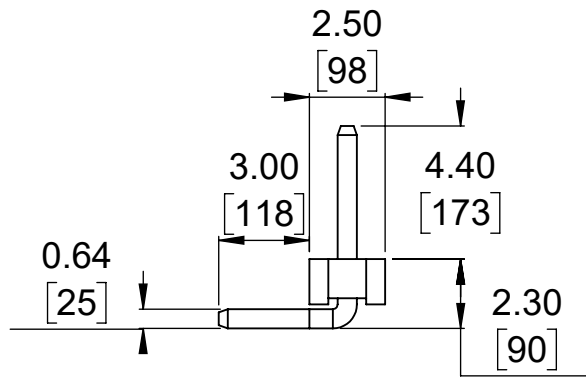
 **Pololu**
Robotics & Electronics
© 2017 Pololu Corporation



① Front view
Scale 4:1



② Isometric view
Scale 4:1



③ Side view
Scale 4:1



④ Actual size
Scale 1:1

1. To get the specified scale, select 100% in print settings.

<https://www.pololu.com/product/3542>

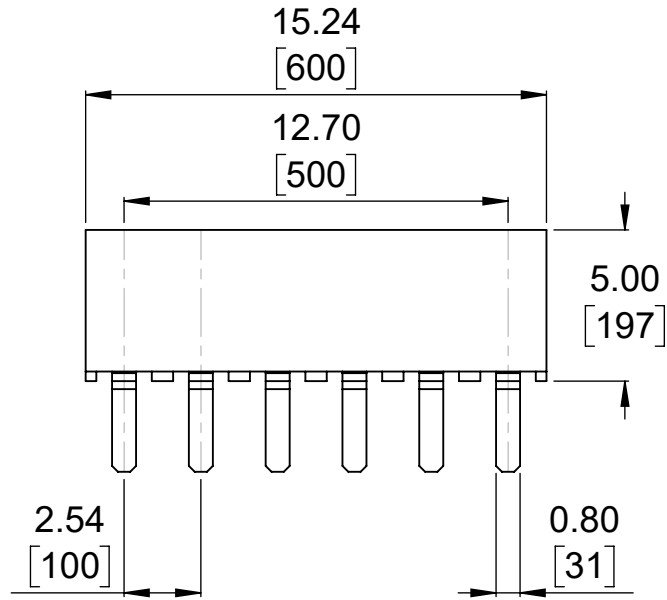
Name: Romi Encoder Pair Kit,
12 CPR, 3.5-18V

Item number:
3542

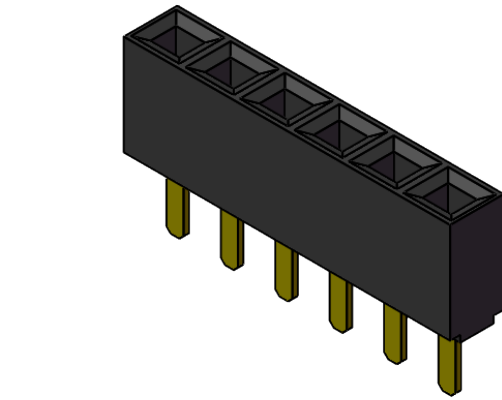
Drawing date:
3 February 2017

Units: mm
[mil]

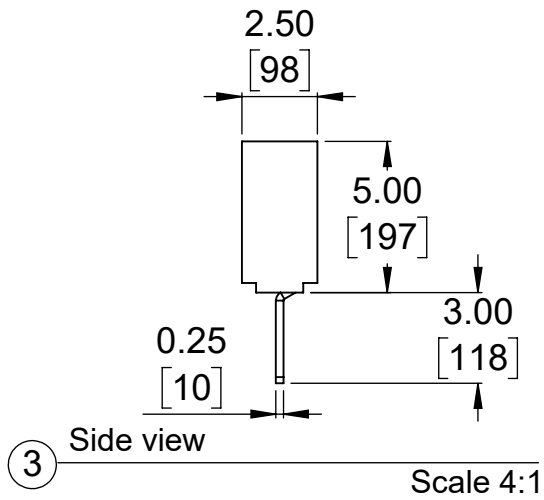




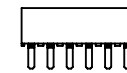
① Front view
Scale 4:1



② Isometric view
Scale 4:1



③ Side view
Scale 4:1



④ Actual size
Scale 1:1

1. To get the specified scale, select 100% in print settings.

https://www.pololu.com/product/3542	
Name: Romi Encoder Pair Kit, 12 CPR, 3.5-18V	Item number: 3542
Drawing date: 3 February 2017	
Units: mm [mil]	 © 2017 Pololu Corporation