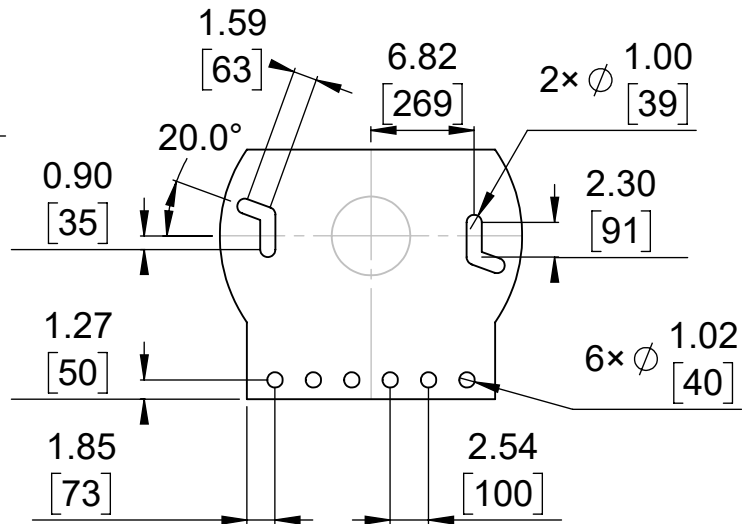
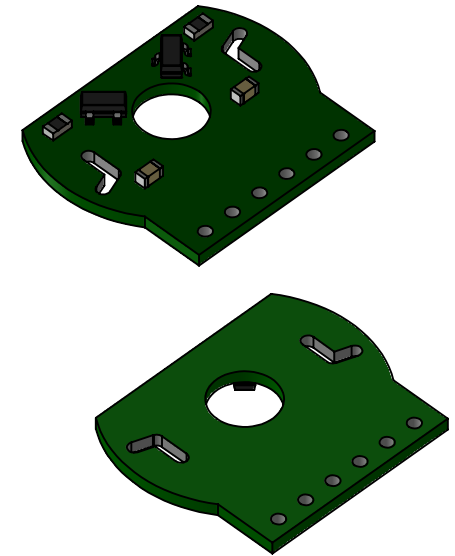


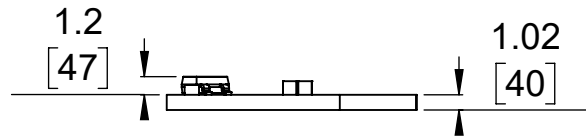
① Board dimensions (top view)  
Scale 2:1



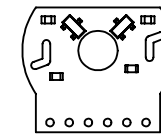
② Connector callouts (bottom view)  
Scale 2:1



③ Isometric view  
Scale 2:1



④ Profile  
Scale 2:1



⑤ Actual size  
Scale 1:1

1. To get the specified scale, select 100% in print settings.
2. Drill location tolerance:  $\pm 0.1$  [ $\pm 5$ ].
3. Board edge tolerance:  $\pm 0.3$  [ $\pm 10$ ].

<https://www.pololu.com/product/1523>

Name:  
Magnetic Encoder Pair Kit for Mini  
Plastic Gearmotors, 12 CPR, 2.7-18V

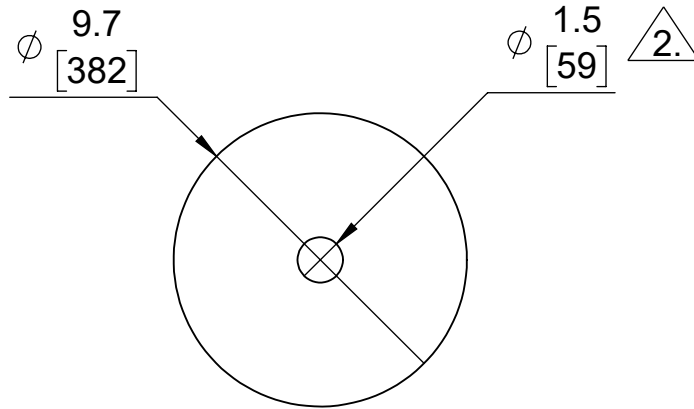
Item number:  
1523

Drawing date:  
4 January 2017

Units: mm  
[mil]

PCB dev code:  
enc04a

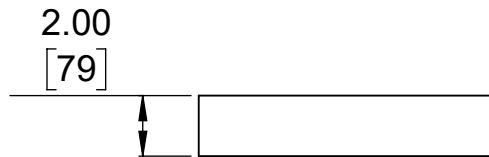
  
© 2016 Pololu Corporation



① Top view  
Scale 4:1



② Isometric view  
Scale 4:1



③ Profile  
Scale 4:1



④ Actual size  
Scale 1:1

1. To get the specified scale, select 100% in print settings.



Designed to fit extended motor shaft on Pololu Mini Plastic Gearmotors

<https://www.pololu.com/product/1523>

Name:  
Magnetic Encoder Pair Kit for Mini  
Plastic Gearmotors, 12 CPR, 2.7-18V

Item number:  
1523

Drawing date:  
6 January 2017

Units:  
mm  
[mil]

Dev code:  
w1r02b

  
Robotics & Electronics  
© 2016 Pololu Corporation