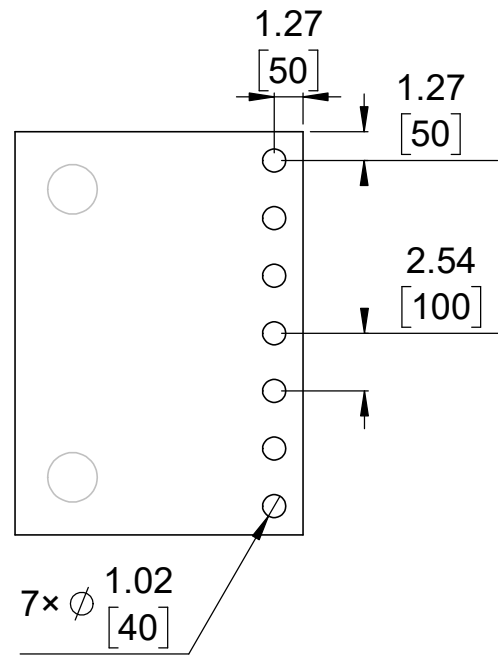
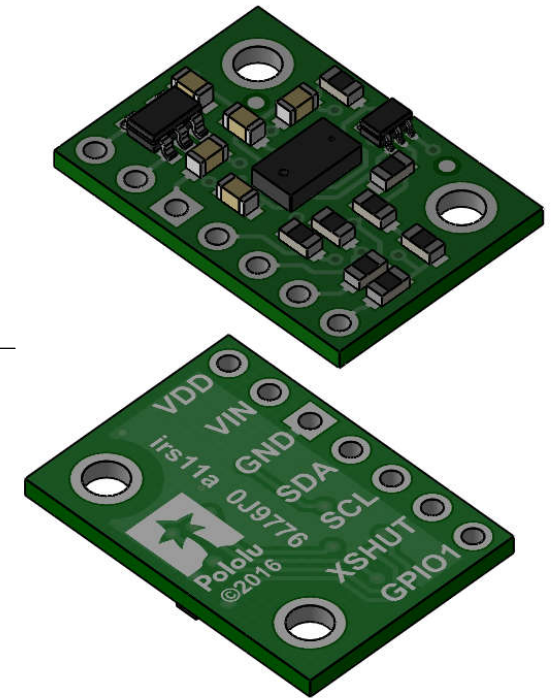


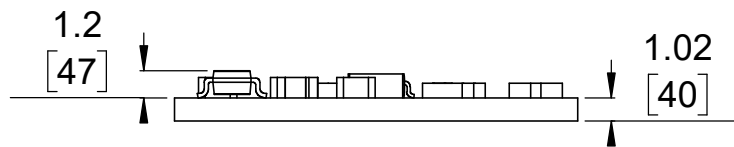
① Board dimensions (top view)
Scale 3:1



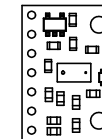
② Connector callouts (bottom view)
Scale 3:1



③ Isometric view
Scale 3:1




④ Profile
Scale 3:1



⑤ Actual size
Scale 1:1

- ①. Intended for #2 screws.
- ②. To get the specified scale, select 100% in print settings.
- ③. Drill location tolerance: ± 0.1 [± 5].
- ④. Board edge tolerance: ± 0.3 [± 10].

<https://www.pololu.com/category/220>

Name: VL53L0X/VL53L1X/VL53L3CX Time-of-Flight Distance Sensor Carrier with Voltage Regulator		Item number: 2490, 3415, 3416
Drawing date: 27 August 2020	Dev code: irs11a	 Pololu Robotics & Electronics © 2018 Pololu Corporation
Units: mm [mil]	Material: mixed	