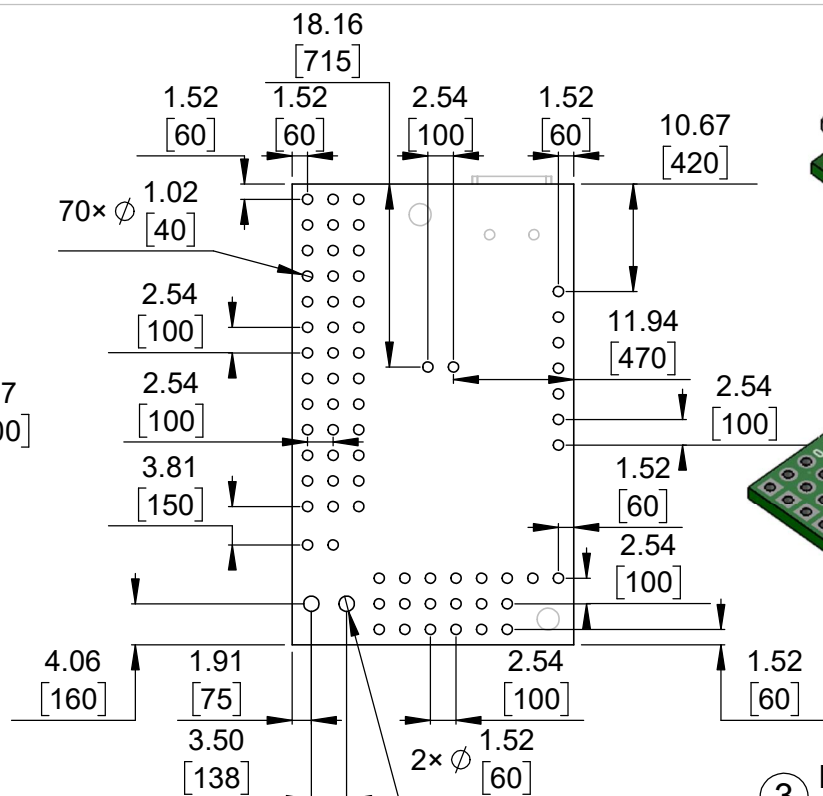
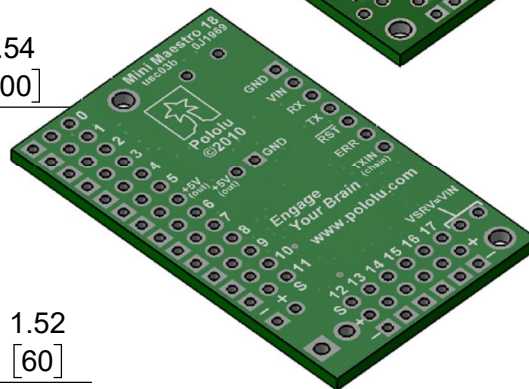
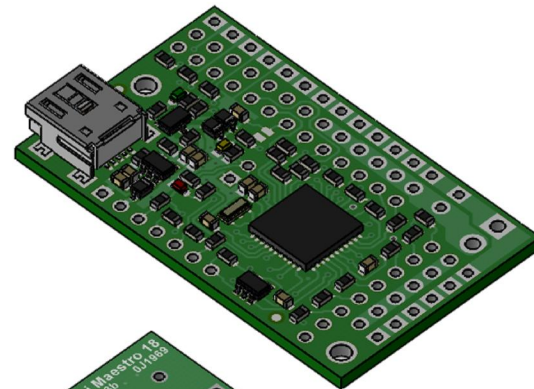


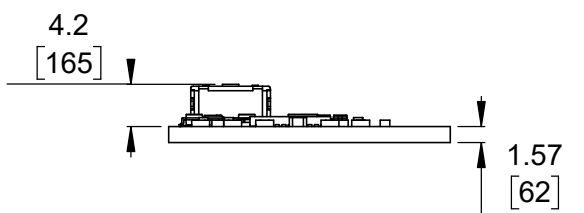
1 Board dimensions (top view)
Scale 4:3



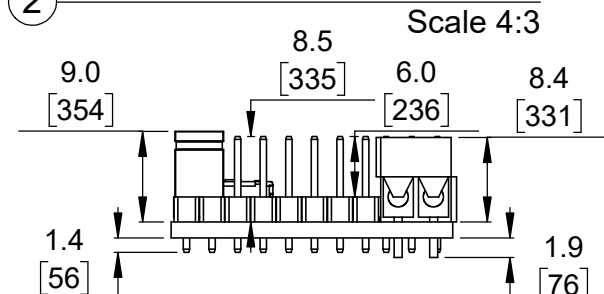
2 Connector callouts (bottom view)
Scale 4:3



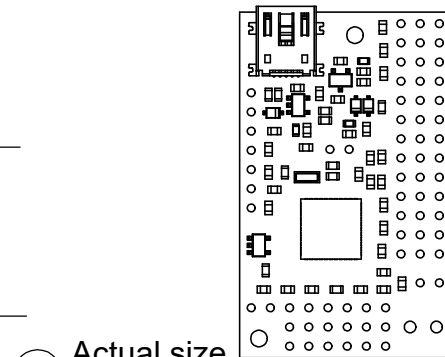
3 Isometric view
Scale 4:3



4 Profile
Scale 4:3



5 Profile (with through-hole connectors)
Scale 4:3



6 Actual size
Scale 1:1

- To get the specified scale, select 100% in print settings.
- Drill location tolerance: ± 0.1 [± 5].
- Board edge tolerance: ± 0.3 [± 10].

<https://www.pololu.com/product/1354>

Name: Mini Maestro 18-Channel USB Servo Controller		Item number: 1354, 1355
Drawing date: 10 July 2017	Dev code: usc03b	 Pololu Robotics & Electronics © 2017 Pololu Corporation
Units: mm [mil]	Material: mixed	