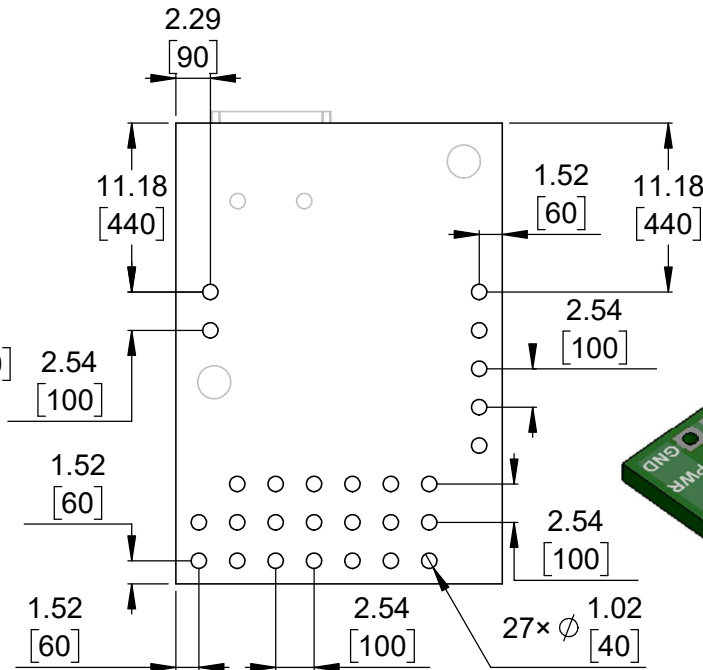
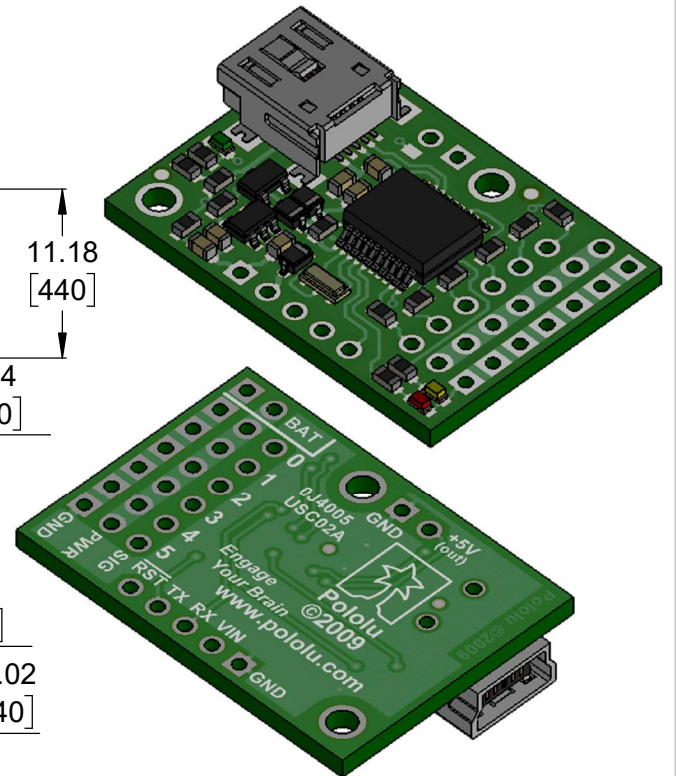


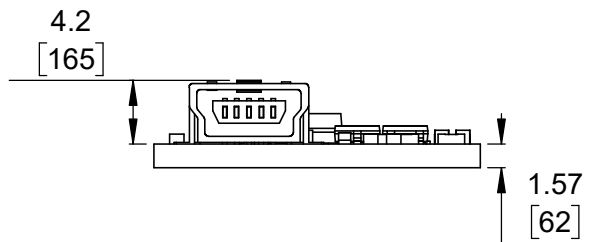
① Board dimensions (top view)
Scale 2:1



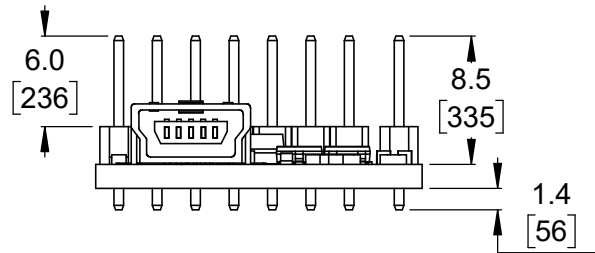
② Connector callouts (bottom view)
Scale 2:1



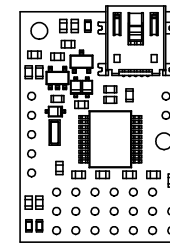
③ Isometric view
Scale 2:1



④ Profile
Scale 2:1



⑤ Profile (with through-hole connectors)
Scale 2:1



⑥ Actual size
Scale 1:1

1. To get the specified scale, select 100% in print settings.
2. Drill location tolerance: ± 0.1 [± 5].
3. Board edge tolerance: ± 0.3 [± 10].

<https://www.pololu.com/product/1350>

Name: Micro Maestro 6-Channel USB Servo Controller		Item number: 1350, 1351
Drawing date: 10 July 2017	Dev code: usc02a	 © 2017 Pololu Corporation
Units: mm [mil]	Material: mixed	