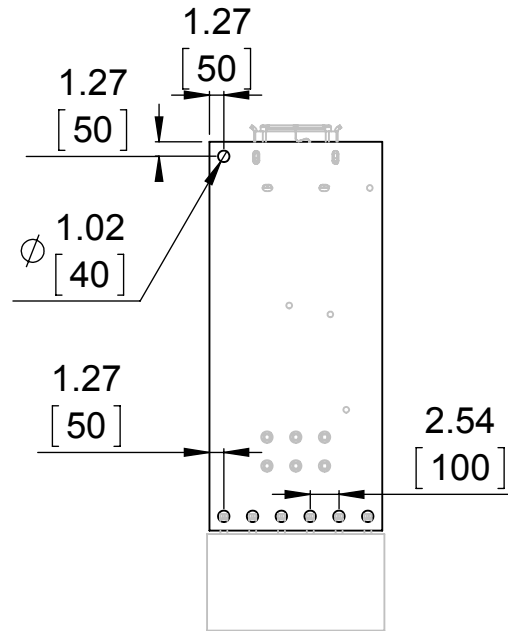
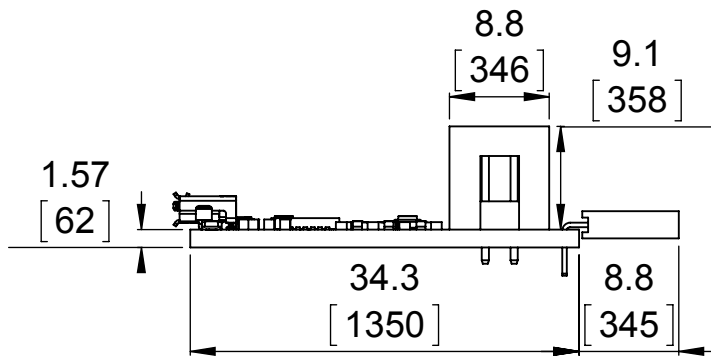


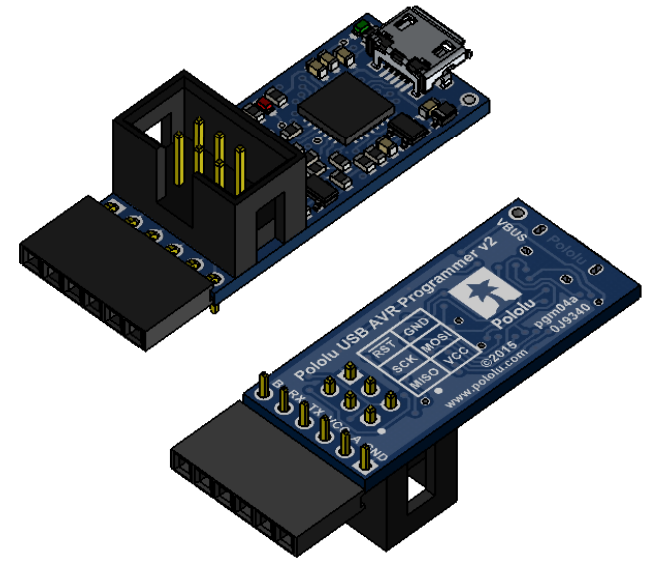
1 Board dimensions (top view)
Scale 3:2



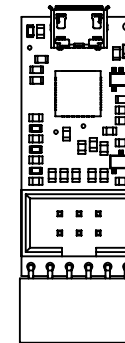
2 Connector callouts (bottom view)
Scale 3:2



4 Profile
Scale 3:2



3 Isometric view
Scale 3:2



5 Actual size
Scale 1:1

1. To get the specified scale, select 100% in print settings.
2. Drill location tolerance: ± 0.1 [± 5].
3. Board edge tolerance: ± 0.3 [± 10].

https://www.pololu.com/product/3170	
Name: Pololu USB AVR Programmer v2	Item number: 3170
Drawing date: 24 March 2016	
Units: mm [mil]	PCB dev code: pgm04a
 © 2016 Pololu Corporation	