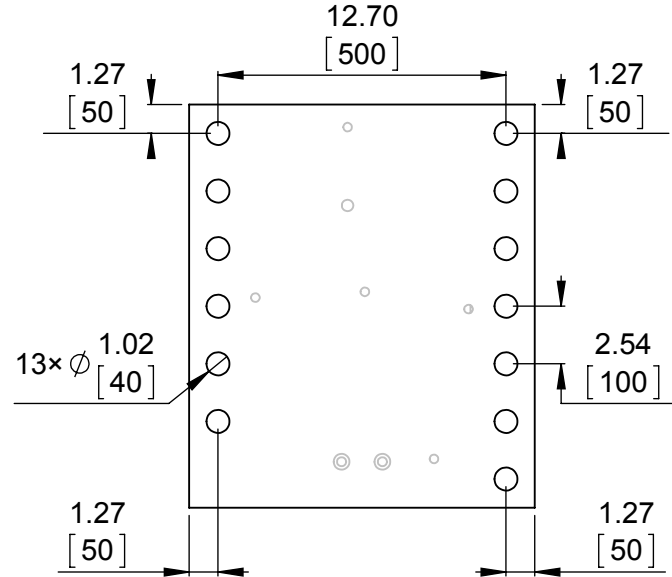
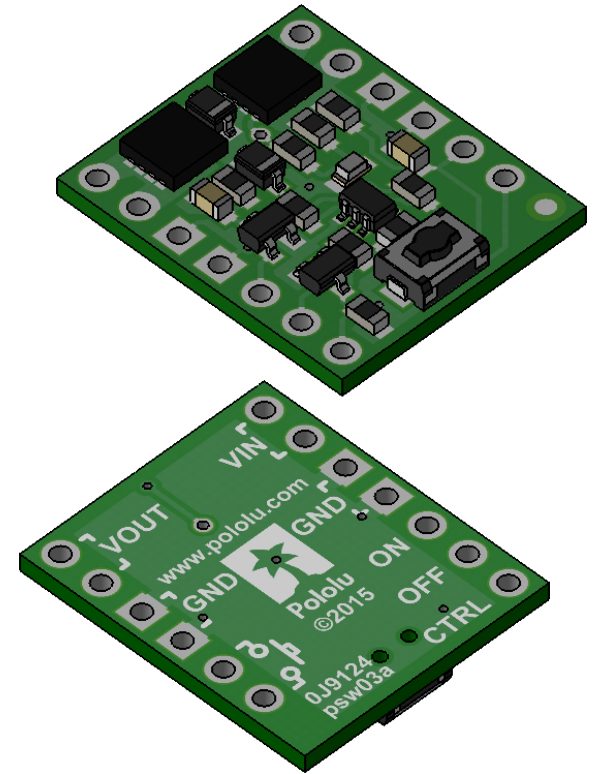


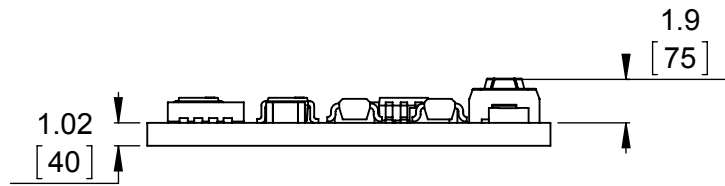
1 Board dimensions (top view)
Scale 3:1



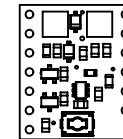
2 Connector callouts (bottom view)
Scale 3:1



3 Isometric view
Scale 3:1



4 Profile
Scale 3:1



5 Actual size
Scale 1:1

- To get the specified scale, select 100% in print settings.
- Drill location tolerance: ± 0.1 [± 5].
- Board edge tolerance: ± 0.3 [± 10].

<https://www.pololu.com/product/2808>

Name:
Mini Pushbutton Power Switch with
Reverse Voltage Protection

Item numbers:
2808, 2809

Drawing date:
12 January 2016

Units: mm
[mil]

PCB dev code:
psw03a

Pololu
Robotics & Electronics
© 2016 Pololu Corporation