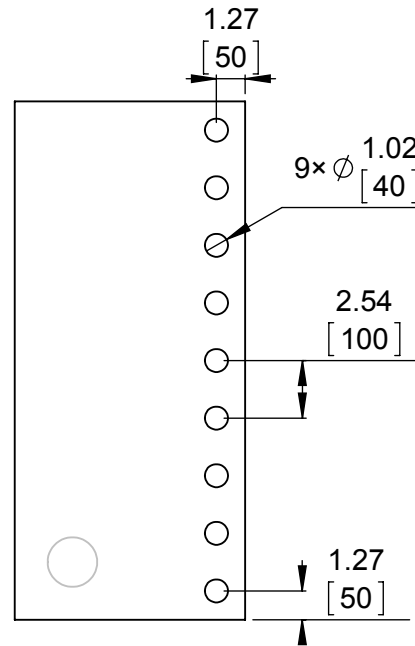
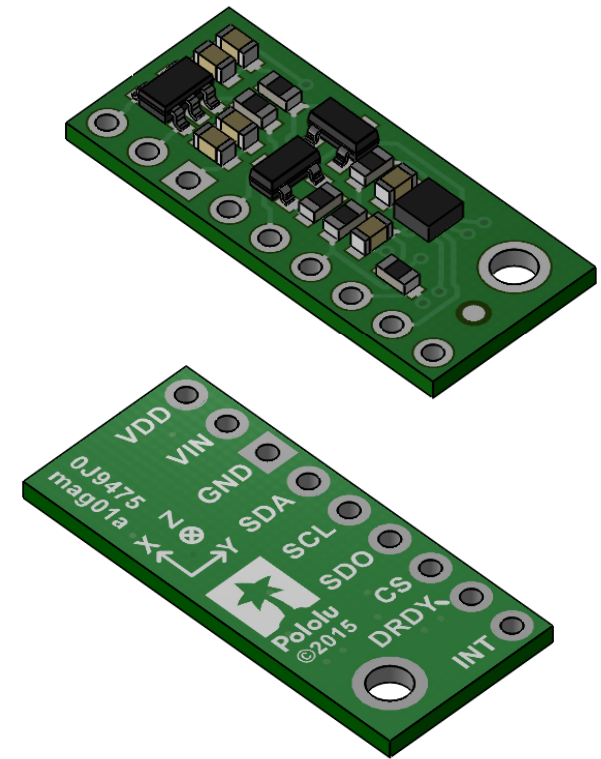


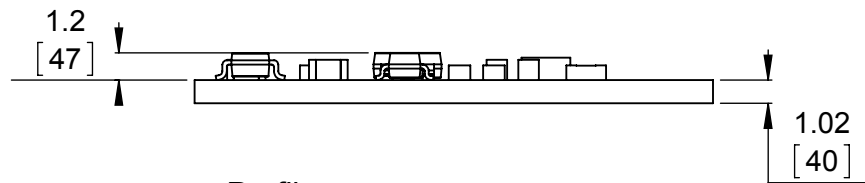
1 Board dimensions (top view)
Scale 3:1



2 Connector callouts (bottom view)
Scale 3:1



3 Isometric view
Scale 3:1



4 Profile
Scale 3:1



5 Actual size
Scale 1:1

1. To get the specified scale, select 100% in print settings.
2. Drill location tolerance: ± 0.1 [± 5].
3. Board edge tolerance: ± 0.3 [± 10].

<https://www.pololu.com/product/2737>

Name:
LIS3MDL 3-Axis Magnetometer Carrier
with Voltage Regulator

Item number:
2737

Drawing date:
7 January 2016

Units:
mm
[mil]

PCB dev code:
mag01a

Pololu
Robotics & Electronics
© 2016 Pololu Corporation