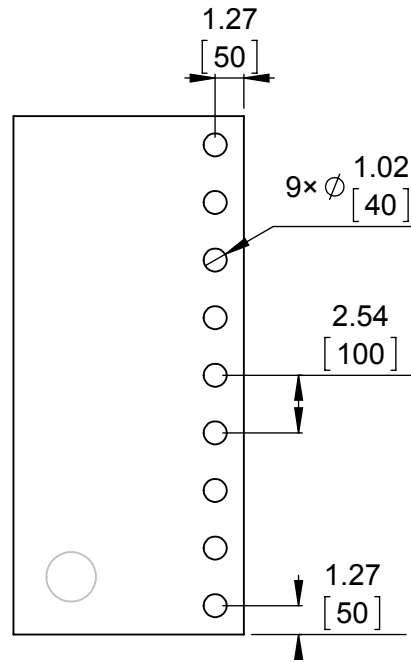
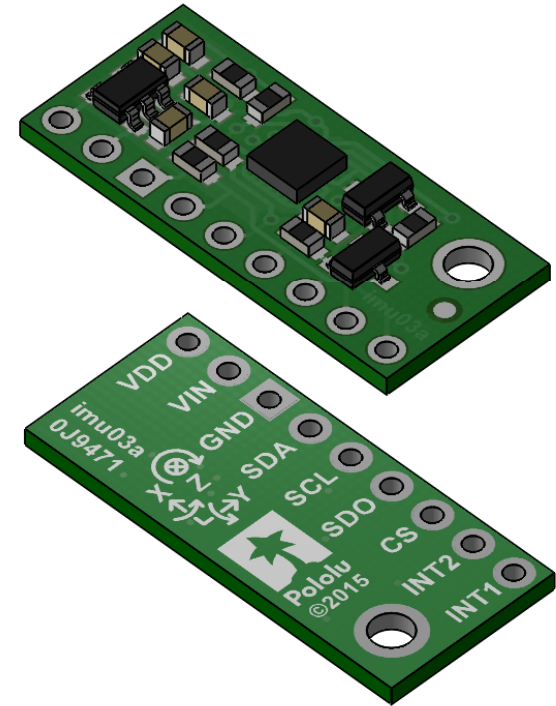


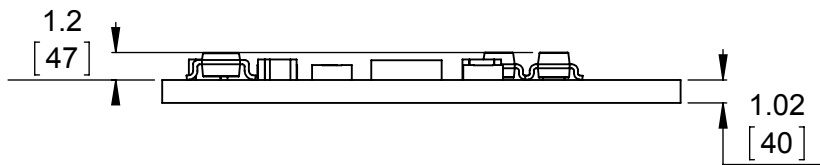
1 Board dimensions (top view)  
Scale 3:1



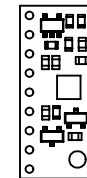
2 Connector callouts (bottom view)  
Scale 3:1



3 Isometric view  
Scale 3:1




4 Profile  
Scale 3:1



5 Actual size  
Scale 1:1

1. To get the specified scale, select 100% in print settings.
2. Drill location tolerance:  $\pm 0.1$  [ $\pm 5$ ].
3. Board edge tolerance:  $\pm 0.3$  [ $\pm 10$ ].

|  |                         |
|--|-------------------------|
| <a href="https://www.pololu.com/product/2736">https://www.pololu.com/product/2736</a>                              |                         |
| Name:<br>LSM6DS33 Accelerometer and Gyro<br>Carrier with Voltage Regulator   | Item number:<br>2736    |
| Drawing date:<br><b>7 January 2016</b>   |                         |
| Units:<br>mm<br>[mil]  | PCB dev code:<br>imu03a |
| <br>© 2016 Pololu Corporation |                         |