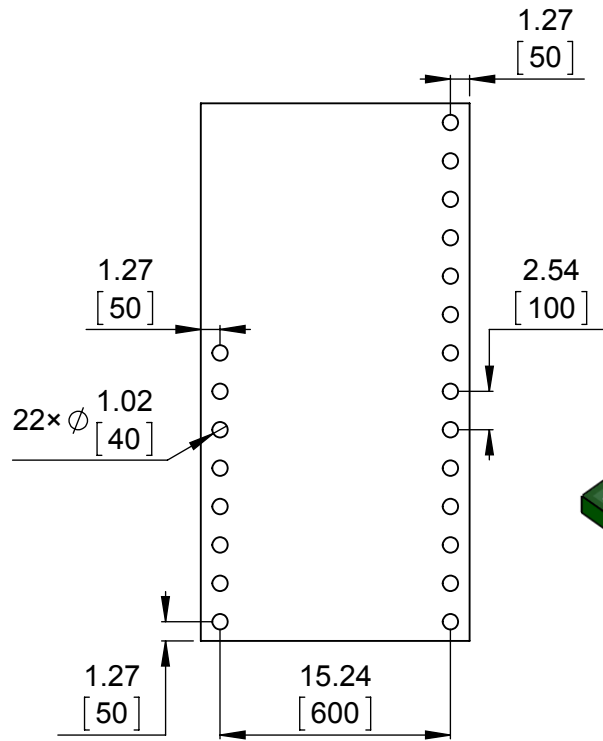
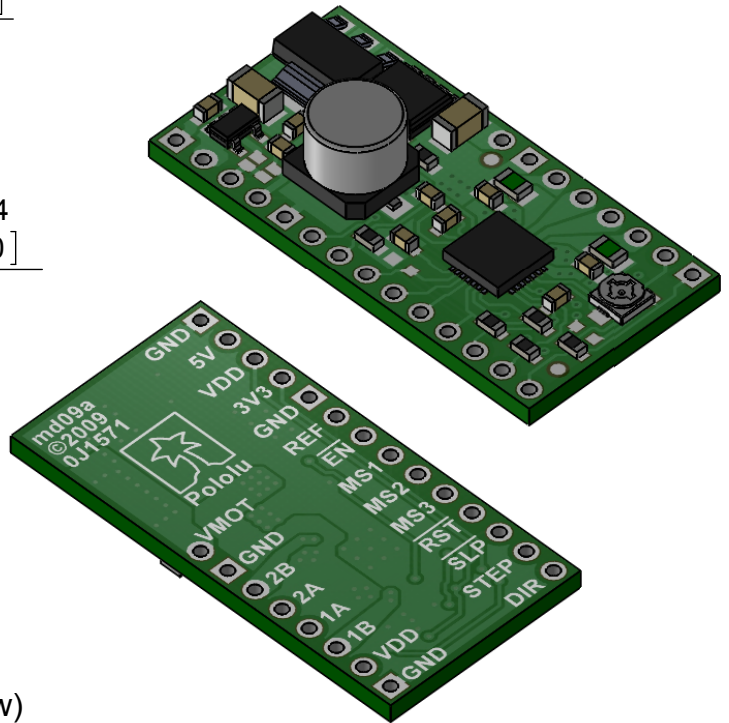


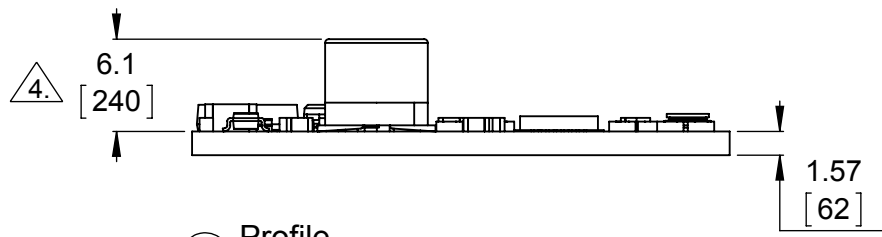
1 Board dimensions (top view)
Scale 2:1



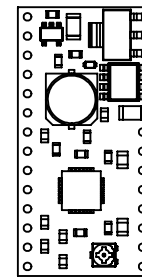
2 Connector callouts (bottom view)
Scale 2:1



3 Isometric view
Scale 2:1



4 Profile
Scale 2:1



5 Actual size
Scale 1:1

1. To get the specified scale, select 100% in print settings.
2. Drill location tolerance: ± 0.1 [± 5].
3. Board edge tolerance: ± 0.3 [± 10].

4. Height of capacitor above the board is 7.8 [310] for boards manufactured prior to December 2014.

<https://www.pololu.com/product/1183>

Name: A4988 Stepper Motor Driver Carrier with Voltage Regulators

Item numbers: 1183

Drawing date: 18 December 2015

Units: mm [mil]

PCB dev code: md09a

Pololu
Robotics & Electronics
© 2015 Pololu Corporation