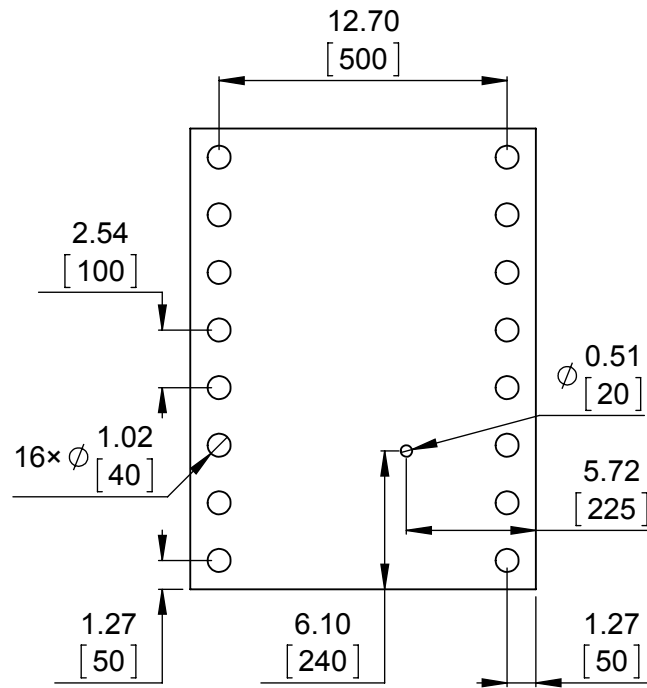
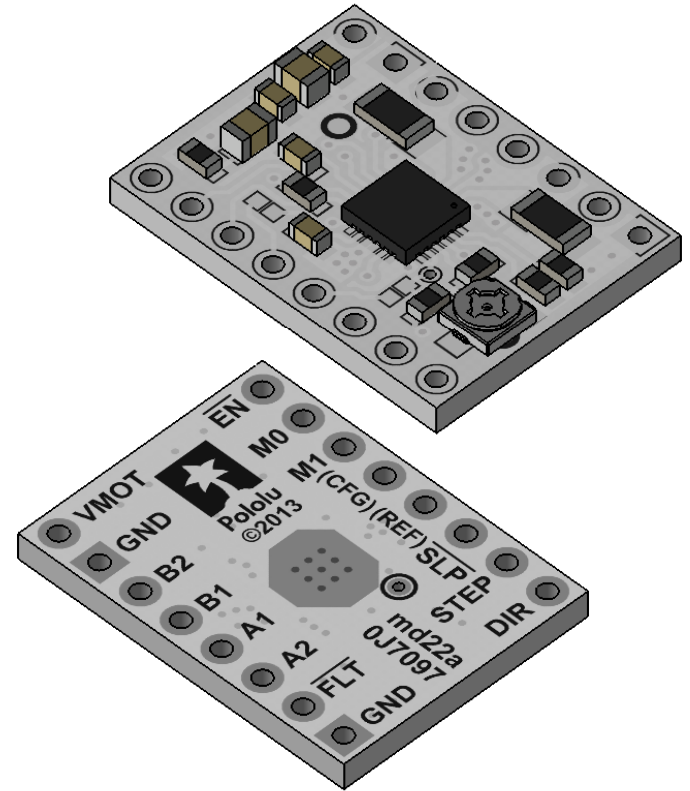


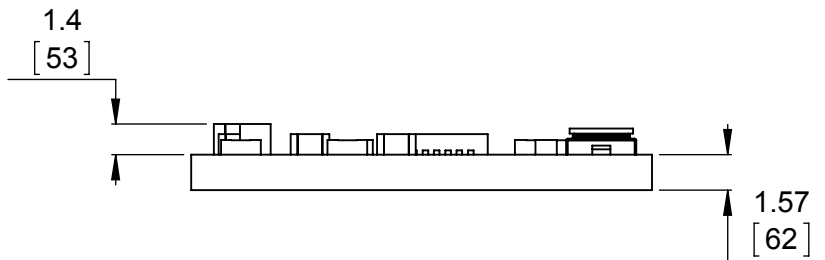
1 Board dimensions (top view)
Scale 3:1



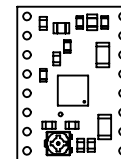
2 Connector callouts (bottom view)
Scale 3:1



3 Isometric view
Scale 3:1



4 Profile
Scale 3:1



5 Actual size
Scale 1:1

1. To get the specified scale, select 100% in print settings.
2. Drill location tolerance: ± 0.1 [± 5].
3. Board edge tolerance: ± 0.3 [± 10].

<https://www.pololu.com/product/2134>

Name: DRV8834 Low-Voltage Stepper Motor Driver Carrier

Item numbers:
2134

Drawing date:

16 December 2015

Units: mm
[mil]

PCB dev code:
md22a


© 2015 Pololu Corporation