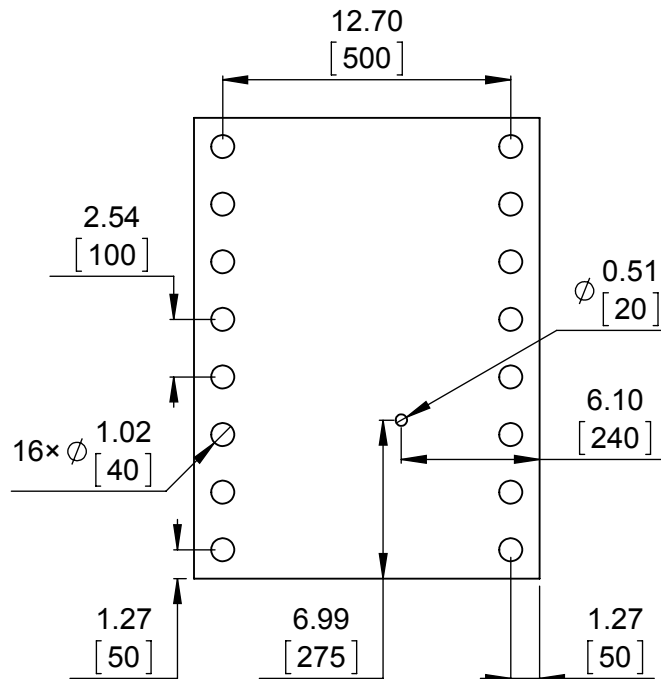
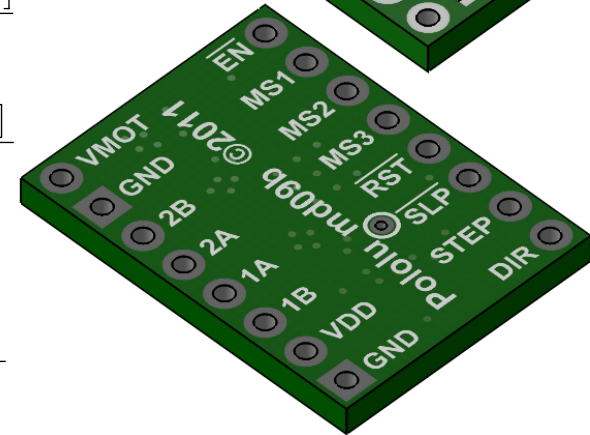
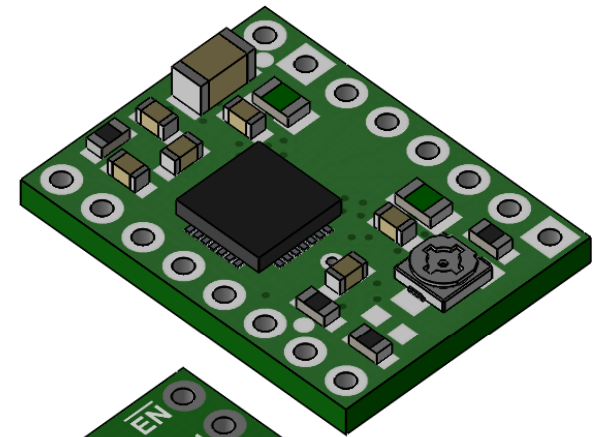


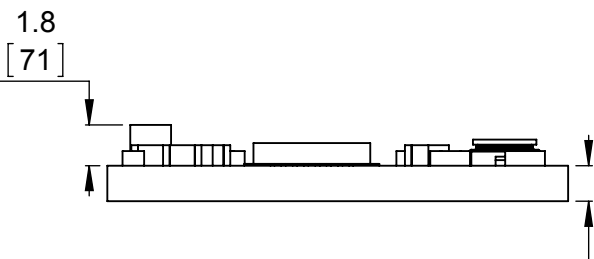
1 Board dimensions (top view)  
Scale 3:1



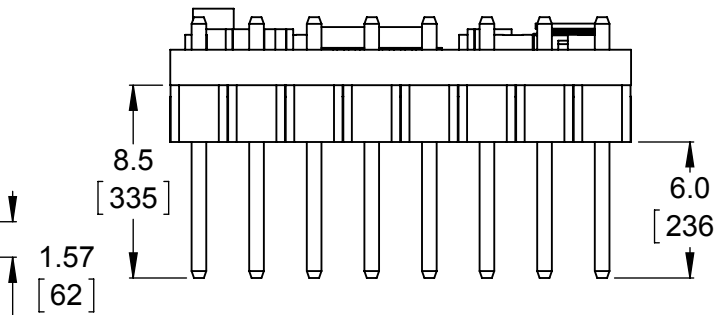
2 Connector callouts (bottom view)  
Scale 3:1



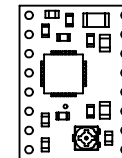
3 Isometric view  
Scale 3:1



4 Profile  
Scale 3:1



5 Profile with headers  
Scale 3:1



6 Actual size  
Scale 1:1

1. To get the specified scale, select 100% in print settings.
2. Drill location tolerance:  $\pm 0.1$  [ $\pm 5$ ].
3. Board edge tolerance:  $\pm 0.3$  [ $\pm 10$ ].

<https://www.pololu.com/category/156>

Name: **A4988 Stepper Motor Driver Carrier**

Item numbers:  
1182, 2975, 2980, 2985

Drawing date:

**15 December 2015**

Units: mm  
[mil]

PCB dev code:  
**md09b**

**Pololu**  
Robotics & Electronics  
© 2015 Pololu Corporation