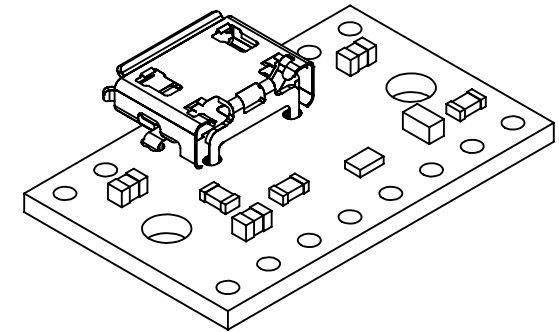
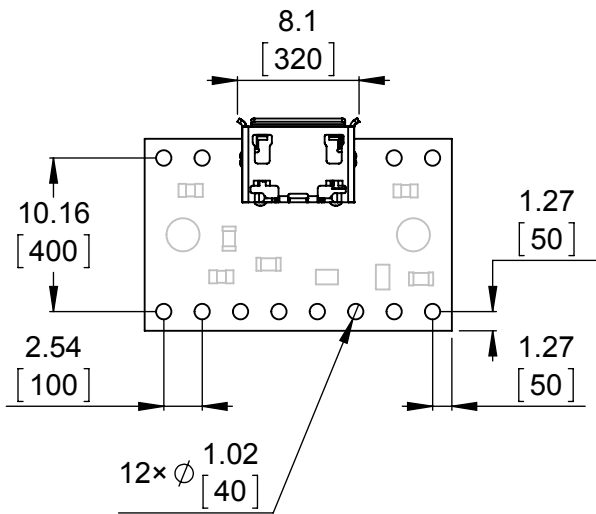


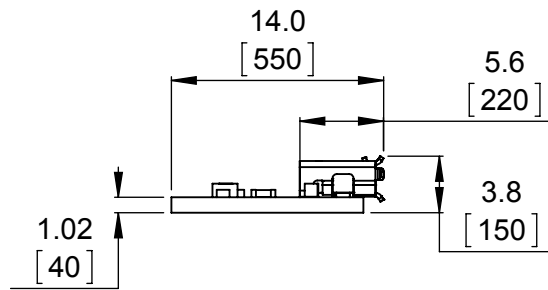
① Mounting callouts
Scale 2:1



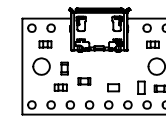
② Isometric view
Scale 3:1



③ Connector callouts
Scale 2:1




④ Profile
Scale 2:1



⑤ Actual size
Scale 1:1

1. To get the specified scale, select 100% in print settings.
2. Drill hole tolerance: +/-5 mils.
3. Board edge tolerance: +/-10 mils.

<http://www.pololu.com/product/2594>

Name: FPF1320 Power Multiplexer with USB Micro-B Connector		Item number: 2594
Drawing date: 14 April 2014		
Units: mm [mil]	PCB dev code: usb05b	
 © 2014 Pololu Corporation		