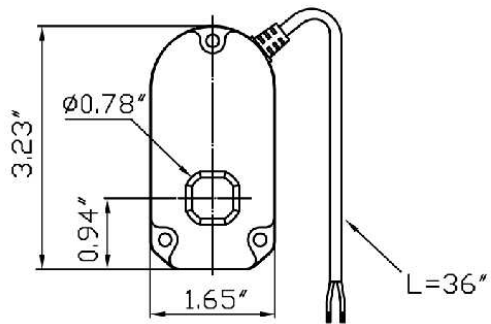
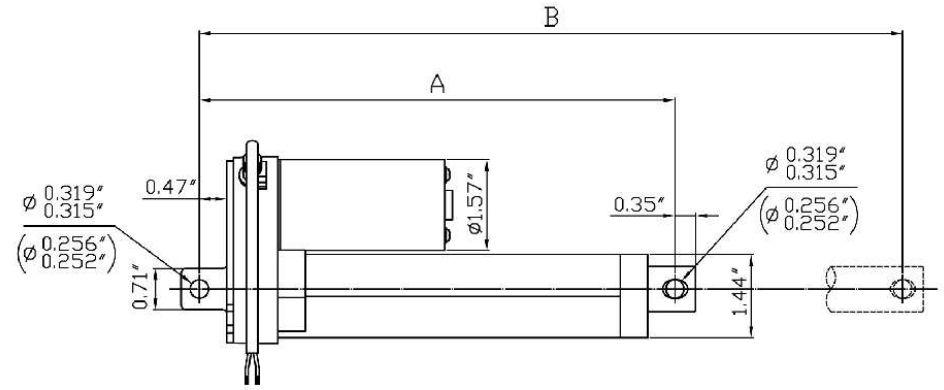
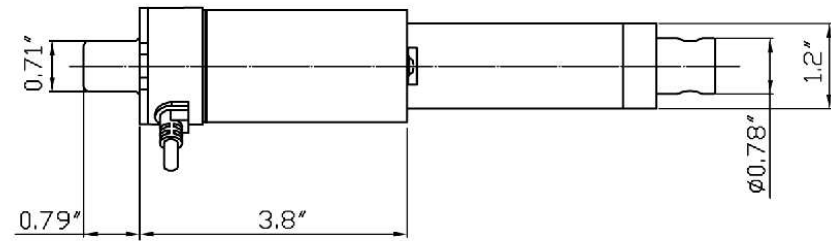


Gear Ratio	No Load speed(in/s)	Max. Load(Ibs)
5:1	1.8"	34
10:1	1.1"	56
20:1	0.6"	112
30:1	0.4"	167
40:1	0.28"	222
Motor Speed	6000rpm	
Input	12V / 24V(DC)	



WIRE COLOR	COMMENT
RED	MOTOR(+)
BLACK	MOTOR(-)



Stroke	2"	4"	6"	8"	10"	12"
Retracted Length (A±0.12")	6.2"	8.2"	10.2"	12.3"	14.3"	16.3"
Extended Length (B±0.12")	8.2"	12.2"	16.2"	20.1"	24.1"	28.1"

PROPRIETARY AND CONFIDENTIAL

THE INFORMATION CONTAINED IN THIS DRAWING IS THE SOLE PROPERTY OF IOWA EXPORT-IMPORT. ANY REPRODUCTION IN PART OR AS A WHOLE WITHOUT THE WRITTEN PERMISSION OF IOWA EXPORT-IMPORT IS PROHIBITED.

Global Solutions
IOWA 512 Tuttle Street
 Export-Import Des Moines, Iowa 50309-4618

				Units	Inches	Part Name	
				Tolerances			LD3 Standard
				Materials			
Revision	Date	Drawn By	Description	Finish		Part No.	
A	5/25/2010	KO	LD Series Actuator	Scale	None		
B				Revision	A		
C				Comments:			
D							

5

4

3

2

1