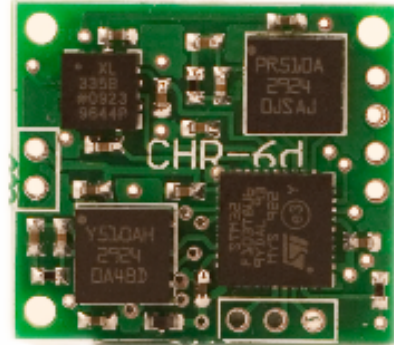


CHR-6d Digital Inertial Measurement Unit

Product datasheet - Rev. 1.1, Preliminary

Features

- + 3.3 V single-supply operation
- 3-axes rotation rate measurement
- 3-axes acceleration measurement
- Onboard 32-bit ARM Cortex processor
- TTL UART communication
- Configurable windowed Parks-McClellan FIR filter
- 16-bit effective measurement resolution
- High rate stability over temperature
- +/- 400 °/s full-scale gyro range
- +/- 3g full-scale accelerometer range
- 1.5 grams



Applications

- Robotics
- Platform Stabilization
- Motion Tracking
- Enhanced GPS Navigation
- General Motion Sensing
- Image Stabilization

Device Overview

The CHR-6d is a complete 6-axis Inertial Measurement Unit (IMU), with 3-axes of rotation rate measurement, and 3-axes of acceleration measurement. The CHR-6d features a footprint of only .8" x .7" x .1", and a weight of only 1.5 grams.

The CHR-6d includes a ARM Cortex processor running at 64 Mhz. All sensor channels are oversampled and decimated to provide 16-bits of resolution, and a Parks-McClellan window low-pass FIR filter is then applied to remove additional noise. The corner frequency of the filter can be adjusted in 10 Hz increments from 10 Hz to 140 Hz for each channel independently. The number of taps used in each filter can also be adjusted from 8, 13, 32, and 64 taps. The filter can also be disabled if preferred.

Communication is performed over a simple TTL UART interface at 115200 Baud. The CHR-6d can be configured to transmit sensor data automatically at user-selectable rates, or to wait until specific requests for data are received over the UART.

While the CHR-6d comes ready to use out-of-the-box, all pins needed to reprogram the Cortex processor are available. Four unused digital IO pins are also available for additional flexibility when custom firmware is developed. Our source code is available as a reference.

CHR-6d Digital Inertial Measurement Unit

Product datasheet - Rev. 1.1, Preliminary

1.	Absolute Maximum Ratings	3
2.	Electrical Characteristics	3
3.	Pin Configuration and Functional Descriptions	4
4.	Mechanical Drawing	5
5.	Basic Operation	5
5.1.	Sampling and Filtering	6
5.2.	Calibration	6
5.3.	Self-Test	7
6.	Communication with the CHR6-d	7
6.1.	CHR-6d RX Packets	7
6.1.1.	CHR-6d RX Packet Overview	8
6.1.2.	SET_FIR_CORNERS	9
6.1.3.	SET_FIR_TAPS	9
6.1.4.	SET_ACTIVE_CHANNELS	10
6.1.5.	SET_SILENT_MODE	10
6.1.6.	SET_BROADCAST_MODE	11
6.1.7.	SET_X_GYRO_BIAS	11
6.1.8.	SET_Y_GYRO_BIAS	12
6.1.9.	SET_Z_GYRO_BIAS	12
6.1.10.	SET_X_ACCEL_BIAS	12
6.1.11.	SET_Y_ACCEL_BIAS	13
6.1.12.	SET_Z_ACCEL_BIAS	13
6.1.13.	ZERO_RATE_GYROS	13
6.1.14.	SELF_TEST	14
6.1.15.	WRITE_TO_FLASH	14
6.1.16.	GET_DATA	14
6.1.17.	GET_GYRO_BIAS	15
6.1.18.	GET_ACCEL_BIAS	15
6.1.19.	GET_FIR_CONFIG	15
6.1.20.	GET_FIR_TAP_CONFIG	16
6.1.21.	GET_ACTIVE_CHANNELS	16
6.1.22.	GET_BROADCAST_MODE	16
6.2.	CHR-6d TX Packets	17
6.2.1.	CHR-6d TX Packet Overview	17
6.2.2.	COMMAND_COMPLETE	18
6.2.3.	COMMAND_FAILED	18
6.2.4.	BAD_CHECKSUM	18
6.2.5.	BAD_DATA_LENGTH	18
6.2.6.	UNRECOGNIZED_PACKET	19
6.2.7.	BUFFER_OVERFLOW	19
6.2.8.	STATUS_REPORT	19
6.2.9.	SENSOR_DATA	20
6.2.10.	GYRO_BIAS_REPORT	20
6.2.11.	ACCEL_BIAS_REPORT	20
6.2.12.	FIR_CONFIG_REPORT	21
6.2.13.	FIR_TAP_CONFIG_REPORT	21
6.2.14.	ACTIVE_CHANNEL_REPORT	21
6.2.15.	BROADCAST_MODE_REPORT	22

CHR-6d Digital Inertial Measurement Unit

Product datasheet - Rev. 1.1, Preliminary

1. Absolute Maximum Ratings

Table 1 - CHR-6d Absolute Maximum Ratings

Symbol	Ratings	Maximum Value	Unit
Vdd	Supply voltage	-0.3 to 3.6	V
Vin	Input voltage on any control pin	-0.3 to Vdd + 0.3	V
A	Acceleration	3000 g for .5 ms 10000 g for .1 ms	
Top	Operating temperature range	-40 to +85	°C
Tstg	Storage temperature range	-40 to +125	°C

2. Electrical Characteristics

Symbol	Parameter	Test condition	Min.	Typ.	Max.	Unit
Vdd	Supply voltage		2.6	3.3	3.6	V
Idd	Supply current			50	56	mA

Table 2 - Gyro Electrical Characteristics

Symbol	Parameter	Test Condition	Min.	Typ.	Max.	Unit
FSA	Measurement	4x OUT (amplified)		+/- 100		°/s
FS	Range	OUT (not amplified)		+/- 400		°/s
SoA	Sensitivity	4x OUT (amplified)		10		mV/°/s
So		OUT (not amplified)		2.5		mV/°/s
SoDr	Sensitivity change vs temperature	Delta from 25 °C		.03		%/°/s
Voff	Zero-rate level			1.23		V
Vref	Reference Voltage			1.23		V
OffDr	Zero-rate level change vs. temperature	Delta from 25 °C		.02		°/s/°C
NL	Non linearity	Best fit straight line		+/- 1		% FS
BW	Bandwidth			140		Hz
Rn	Rate noise density			0.017		°/s/rt Hz

Table 3 - Accelerometer Electrical Characteristics

Symbol	Parameter	Test Condition	Min.	Typ.	Max.	Unit
aFS	Measurement Range		+/- 3	+/- 3.6		g
SoXYZ	Sensitivity	Vdd = 3 V	270	300	330	mV/g
Stemp	Sensitivity change due to temperature	Vs = 3 V		0.01		%/°C
nXY	X,Y noise density			150		ug/rt Hz
nZ	Z noise density			300		ug/rt Hz
offXY	X,Y 0 g voltage	Vs = 3 V	1.35	1.5	1.65	V

CHR-6d Digital Inertial Measurement Unit

Product datasheet - Rev. 1.1, Preliminary

offZ	Z 0 g voltage	Vs = 3 V	1.2	1.5	1.8	V
aNL	Non linearity			+-.03		% FS
aBW		With external filter		140		Hz

3. Pin Configuration and Functional Descriptions

Top View (note: drawing is not to scale)

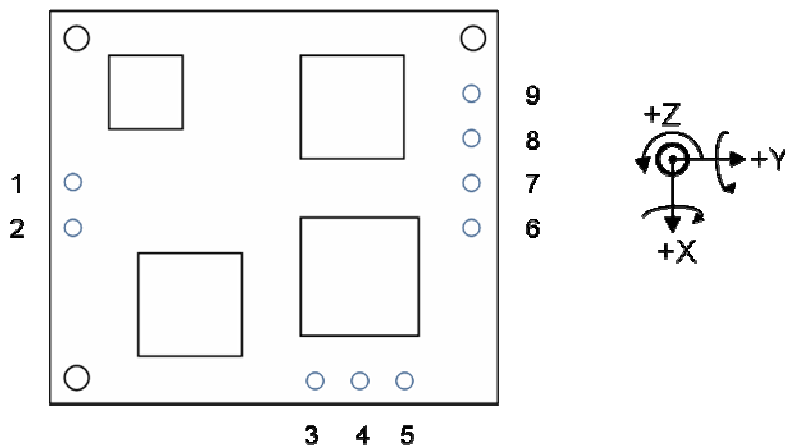


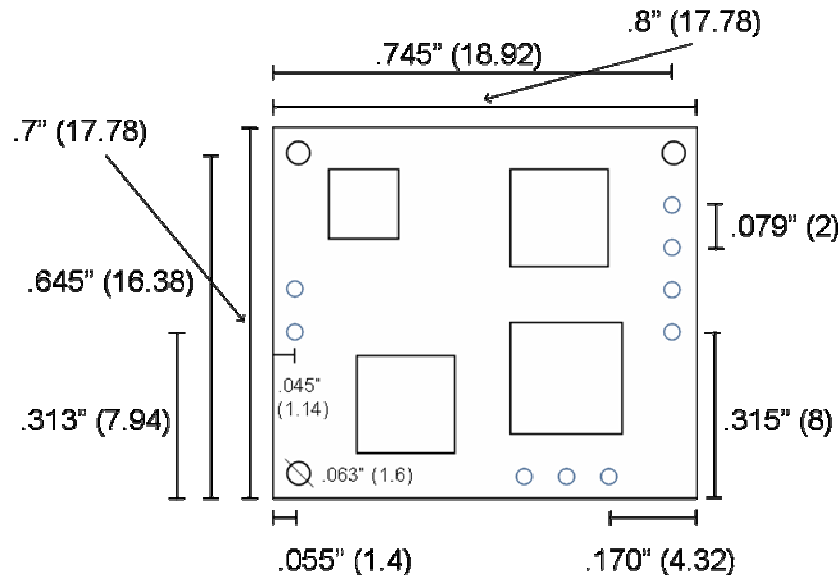
Table 4 - Pin Descriptions

Pin Description		
Pin #	Pin Name	Description
1	Vcc	3.3 V supply voltage
2	GND	Supply ground
3	D4	GPIO pin 4 (for custom firmware development)
4	D3	GPIO pin 3 (for custom firmware development)
5	D2	GPIO pin 2 (for custome firmware development)
6	Boot0	Bootloader pin. Leave disconnected for normal operation. Pull high to activate bootloader (for custom firmware development).
7	D1	GPIO pin 1 (for custom firmware development)
8	RX	RX (in) pin for UART
9	TX	TX (out) pin for UART

CHR-6d Digital Inertial Measurement Unit

Product datasheet - Rev. 1.1, Preliminary

4. Mechanical Drawing



5. Basic Operation

The CHR-6d integrates three orthogonal rate gyro axes and three orthogonal accelerometer axes to provide a full six degree of freedom (6-DOF) measurement solution. The onboard ARM Cortex™ processor samples and filters all six sensing axes.

Communication with the CHR-6d is performed over a TTL UART at 115200 baud. The UART logic level is 3.3V, but the pins are also 5 V tolerant.

The CHR-6d operates in one of two modes: in Broadcast Mode, the IMU automatically transmits sensor data at a user-configurable frequency between 20 Hz and 300 Hz. In Silent Mode, the IMU only transmits data when a GET_DATA packet is received over the UART. The IMU is set to Broadcast Mode by default. The default transmission frequency is 280 Hz.

Regardless of the broadcast frequency, the IMU output registers are updated internally at a rate of 500 Hz. When the IMU transmits sensor data, the most recent samples are sent. Sensor data is always sent in a SENSOR_DATA packet.

Broadcast Mode is enabled by sending a SET_BROADCAST_MODE packet to the IMU. The SET_BROADCAST_MODE packet also configures the broadcast frequency. Silent Mode is enabled by sending a SET_SILENT_MODE packet to the IMU.

By default, the CHR-6d transmits sensor data for all six channels. However, the IMU can also be configured to send data for fewer sensors by sending a SET_ACTIVE_CHANNELS packet. Only data from "active" channels will be transmitted by the IMU.

Sensor data is returned as 16-bit two's complement integers. To obtain actual rates, the data returned by the IMU should be multiplied by a scale factor. For the rate gyros, multiplying the

CHR-6d Digital Inertial Measurement Unit

Product datasheet - Rev. 1.1, Preliminary

returned sensor data by 0.02014 gives the angular rate in degrees per second. For the accelerometers, multiplying the sensor data by 0.0001678 gives the acceleration in m/s/s. Actual scale factors vary between devices.

All changes made to the IMU configuration are stored in RAM. To make the configuration persistent, a WRITE_TO_FLASH packet can be sent to the IMU.

5.1. Sampling and Filtering

The CHR-6d oversamples and decimates the ADC data on all channels to reduce quantization noise and increase the effective ADC resolution to 16 bits. After decimation, sensor data is processed using a configurable Parks-McClellan window FIR low-pass filter. The corner frequency of the filter is independently adjustable for each channel from 10 Hz to 140 Hz in 10 Hz increments. By default, the corner frequency of each filter is set to 140 Hz.

The number of taps used in each filter can be also be set to 8, 16, 32, or 64. More filter taps results in a tighter transition band and more stop band attenuation, but at the expense of higher group delay (see Table 5). The group delay of the FIR filter is given by

$$d = (taps/2) * (1000/fs)$$

where d is the delay in milliseconds, $taps$ is the number of taps in the filter, and fs is the internal sample frequency of the IMU after oversampling and decimation. Filter performance specifications for each number of taps is given in Table 5.

Table 5- Group Delay for filter settings

TAPS	Group Delay (ms)	Stop-band attenuation (dB)	Transition-band width (hz)
8	11.43	40	80
16	22.86	40	50
32	45.71	60	30
64	91.43	80	20

By default, 32 taps are used in each filter. If desired, the FIR filter can be disabled entirely to eliminate filter-induced phase-lag.

The corner frequency of each FIR filter is configuring by sending a SET_FIR_CORNERS packet to the IMU. The SET_FIR_CORNERS packet also allows the FIR filters to be disabled. The number of taps used in each filter is configured by sending a SET_FIR_TAPS packet to the IMU.

5.2. Calibration

The zero-rate output of the accelerometers and the rate gyros is device-dependent, and varies with temperature. This is particularly true for the rate gyros. The 16-bit signed value returned by the IMU for each axis is given by

$$data = ADC_data - bias$$

CHR-6d Digital Inertial Measurement Unit

Product datasheet - Rev. 1.1, Preliminary

where *ADC_data* is the unsigned filtered ADC data, and *bias* is a configurable 16-bit unsigned value. By default, *bias* is set at 0x802F for the accelerometers and 0x5F6B for the rate gyros. While the default biases may be sufficient for the accelerometers, the biases for the rate gyros should be reconfigured at run-time.

The bias for the x, y, and z gyro axes can be configured using the SET_X_GYRO_BIAS packet, the SET_Y_GYRO_BIAS packet, and the SET_Z_GYRO_BIAS packet, respectively. The IMU also includes an auto-zero command that samples the rate gyro channels and automatically sets the bias to zero the output data. Automatic gyro calibration is triggered by sending a ZERO_RATE_GYROS packet to the IMU. During automatic calibration, which takes approximately three seconds, the IMU should be stationary.

The bias for the accelerometers is set using the SET_X_ACCEL_BIAS, SET_Y_ACCEL_BIAS, and SET_Z_ACCEL_BIAS packets.

5.3. Self-Test

The CHR-6d includes a self-test feature that checks each sensor channel for proper functionality. The self-test sequence is started by sending a SELF_TEST packet to the IMU. On completion, a STATUS_REPORT packet is returned to report whether each sensor channel passed the self-test.

6. Communication with the CHR6-d

The CHR-6d communicates over a logic-level UART at 115200 baud.

6.1. CHR-6d RX Packets

RX Packets are packets that can be received by the CHR-6d. Each packet received by the IMU must begin with the three byte sequence "snp" to signal the beginning of a new packet. The fourth byte is Packet Type indicator (PT), which identifies the packet being received. The fifth byte, N, is the number of bytes contained in the data section of the packet. The N-byte data section immediately follows data length byte, and the packet is finally ended with a two byte checksum, which contains the sum of all previous bytes in the packet.

If the Packet Type indicator is unrecognized, the IMU will transmit a UNRECOGNIZED_COMMAND packet.

RX Packet Structure

Function	's'	'n'	'p'	PT	N	d ₁	...	d _N	CHK	
Byte	1	2	3	4	5	6	...	N+5	N+6	N+7

RX Packet Description

1 - 3	Each received packet must begin with the three-byte (character) sequence "snp" to signal the beginning of a new packet.
4	PT specifies the packet type.
5	N specifies the number of data bytes to expect.
6 - (N+5)	d ₁ through d _N contain the N data bytes in the packet.
(N+6) - (N+7)	CHK is a two-byte checksum.

CHR-6d Digital Inertial Measurement Unit

Product datasheet - Rev. 1.1, Preliminary

The total size of a packet with **N** data bytes is **(N + 7)** bytes. After the CHR6-d receives a full packet, it checks to ensure that the checksum given in the last two bytes matches the sum of all preceding bytes in the packet. If the checksum is invalid, a **BAD_CHECKSUM** packet is transmitted in response.

6.1.1. CHR-6d RX Packet Overview

Packet Name	PT	Description
SET_FIR_CORNERS	0x80	Sets the corner frequency of the FIR filter for each of the six channels. Also allows user to disable the FIR filter entirely.
SET_FIR_TAPS	0x81	Sets the number of taps used by the FIR filter on each channel. Using more taps results in smaller transition bands and better stop-band attenuation, at the expense of more phase lag.
SET_ACTIVE_CHANNELS	0x82	Specifies which channel data should be transmitted over the UART.
SET_SILENT_MODE	0x83	Enables "Silent Mode." In Silent Mode, the IMU only reports data when a GET_DATA packet is received.
SET_BROADCAST_MODE	0x84	Enables "Broadcast Mode." In Broadcast Mode, the IMU automatically transmits sensor data every Ts milliseconds, where Ts is included in the data section of the SET_BROADCAST_MODE packet.
SET_X_GYRO_BIAS	0x85	Manually sets the x-axis rate gyro zero-point. The zero-point can be automatically set for all gyro axes by sending a ZERO_RATE_GYROS packet.
SET_Y_GYRO_BIAS	0x86	Manually sets the y-axis rate gyro zero-point. The zero-point can be automatically set for all gyro axes by sending a ZERO_RATE_GYROS packet.
SET_Z_GYRO_BIAS	0x87	Manually sets the z-axis rate gyro zero-point. The zero-point can be automatically set for all gyro axes by sending a ZERO_RATE_GYROS packet.
SET_X_ACCEL_BIAS	0x88	Manually sets the x-axis accelerometer zero point.
SET_Y_ACCEL_BIAS	0x89	Manually sets the y-axis accelerometer zero point.
SET_Z_ACCEL_BIAS	0x8A	Manually sets the z-axis accelerometer zero point.
ZERO_RATE_GYROS	0x8B	Starts internal self-calibration of all three rate gyro axes. By default, rate gyros are zeroed on IMU startup, but gyro startup calibration can be disabled (or re-enabled) by sending a SET_START_CAL packet
SELF_TEST	0x8C	Instructs the IMU to perform a self-test of all sensor channels. A STATUS_REPORT packet is transmitted after the self-test is complete.
WRITE_TO_FLASH	0xA0	Writes IMU configuration to on-board flash, so that the configuration persists when the power is cycled.

CHR-6d Digital Inertial Measurement Unit

Product datasheet - Rev. 1.1, Preliminary

GET_DATA	0x01	In Silent Mode, the IMU waits to receive a GET_DATA packet before transmitting sensor data. The most recent data from all active sensor channels is transmitted in response to a GET_DATA packet. In Broadcast Mode, a GET_DATA packet is ignored.
GET_GYRO_BIAS	0x02	Returns the bias values for all three rate gyros in a GYRO_BIAS_REPORT packet.
GET_ACCEL_BIAS	0x03	Return the bias values for all three accel axes in a ACCEL_BIAS_REPORT packet.
GET_FIR_CONFIG	0x04	Returns the FIR corner frequency configuration for all six sensor channels in a FIR_CONFIG_REPORT packet.
GET_FIR_TAP_CONFIG	0x05	Reports the FIR tap count for all sensor channels in a FIR_TAP_CONFIG_REPORT packet.
GET_ACTIVE_CHANNELS	0x06	Reports which channels are "active." Active channels are sensor channels that are measured and transmitted in response to a GET_DATA packet, or periodically in Broadcast Mode.
GET_BROADCAST_MODE	0x07	Returns the BROADCAST_MODE_REPORT packet, which specifies whether the IMU is in Broadcast Mode or Silent Mode.

6.1.2. SET_FIR_CORNERS

Description

Sets the corner frequency of the FIR filter for each of the six channels. The corner frequency can be set at 10 Hz increments to values between 10 Hz and 140 Hz.

Packet Definition

PT = 0x80

N = 0x6

D1	D2	D3	D4	D5	D6
gyro_z	gyro_y	gyro_x	acc_z	acc_y	acc_x

FIR corner frequency = $10^{*(x-1)}$, where x is a one byte value ranging between 2 and 15. If x is 0 or 1, then the FIR filter for the channel is disabled.

After successfully setting the FIR corner frequency on each channel, the IMU transmits a COMMAND_COMPLETE packet.

6.1.3. SET_FIR_TAPS

Description

CHR-6d Digital Inertial Measurement Unit

Product datasheet - Rev. 1.1, Preliminary

Sets the number of taps used by the FIR filter on each channel. Using more taps results in smaller transition bands and better stop-band attenuation, but at the expense of more phase lag. Possible tap counts are 8, 16, 32, and 64.

Packet Definition

PT = 0x81

N = 0x2

D1							D2								
bit 7	bit 6	bit 5	bit 4	bit 3	bit 2	bit 1	bit 0	bit 7	bit 6	bit 5	bit 4	bit 3	bit 2	bit 1	bit 0
NA		NA		gyro_z		gyro_y		gyro_x		accel_z		accel_y		accel_x	

For each channel, the number of taps in the FIR filter is specified by a 2-bit value, where

00 = 8 taps

01 = 16 taps

10 = 32 taps

11 = 64 taps

After successfully setting the number of filter taps on each channel, the IMU transmits a COMMAND_COMPLETE packet.

6.1.4. SET_ACTIVE_CHANNELS

Description

Specifies which channel data should be transmitted over the UART in response to a GET_DATA packet, or periodically in Broadcast Mode. Any combination of sensor channels can be set as active or inactive.

Packet Definition

PT = 0X82

N = 0x1

D1							
bit 7	bit 6	bit 5	bit 4	bit 3	bit 2	bit 1	bit 0
NA	NA	gyro_z	gyro_y	gyro_x	accel_z	accel_y	accel_x

If the bit corresponding to a sensor channel is set (i.e. gyro_z = 1), then the channel is active. If the bit is cleared (i.e. gyro_z = 0), then the channel is inactive, and data from that channel will not be transmitted.

6.1.5. SET_SILENT_MODE

Description

CHR-6d Digital Inertial Measurement Unit

Product datasheet - Rev. 1.1, Preliminary

Enables "Silent Mode." In Silent Mode, the IMU only reports data when a GET_DATA packet is received.

Packet Definition

PT = 0x83

N = 0

The SET_SILENT_MODE packet includes no data bytes (the packet type identifier, PT, is followed immediately by the checksum).

6.1.6. SET_BROADCAST_MODE

Description

Enables "Broadcast Mode." In Broadcast Mode, the IMU automatically transmits sensor data at regular time intervals.

Packet Definition

PT = 0x84

N = 1

D1							
bit 7	bit 6	bit 5	bit 4	bit 3	bit 2	bit 1	bit 0
x							

The broadcast frequency is given by

$$f = ((380/255)*x + 20) \text{ Hz}$$

where f is the broadcast frequency, and x is the data byte passed in the SET_BROADCAST_MODE packet. The broadcast frequency thus ranges between 400 Hz ($x = 255$) and 20 Hz ($x = 0$).

6.1.7. SET_X_GYRO_BIAS

Description

Manually sets the x-axis rate gyro zero-point. The zero-point can be automatically set for all gyro axes by sending a ZERO_RATE_GYROS packet.

Packet Definition

PT = 0x85

N = 2

D1								D2							
bit 7	bit 6	bit 5	bit 4	bit 3	bit 2	bit 1	bit 0	bit 7	bit 6	bit 5	bit 4	bit 3	bit 2	bit 1	bit 0

CHR-6d Digital Inertial Measurement Unit

Product datasheet - Rev. 1.1, Preliminary

Gyro zero-point = 16-bit unsigned value

6.1.8. SET_Y_GYRO_BIAS

Description

Manually sets the y-axis rate gyro zero-point. The zero-point can be automatically set for all gyro axes by sending a ZERO_RATE_GYROS packet.

Packet Definition

PT = 0x86

N = 2

D1								D2							
bit 7	bit 6	bit 5	bit 4	bit 3	bit 2	bit 1	bit 0	bit 7	bit 6	bit 5	bit 4	bit 3	bit 2	bit 1	bit 0
Gyro zero-point = 16-bit unsigned value															

6.1.9. SET_Z_GYRO_BIAS

Description

Manually sets the z-axis rate gyro zero-point. The zero-point can be automatically set for all gyro axes by sending a ZERO_RATE_GYROS packet.

Packet Definition

PT = 0x87

N = 2

D1								D2							
bit 7	bit 6	bit 5	bit 4	bit 3	bit 2	bit 1	bit 0	bit 7	bit 6	bit 5	bit 4	bit 3	bit 2	bit 1	bit 0
Gyro zero-point = 16-bit unsigned value															

6.1.10. SET_X_ACCEL_BIAS

Description

Manually sets the x-axis accelerometer zero point.

Packet Definition

PT = 0x88

N = 2

CHR-6d Digital Inertial Measurement Unit

Product datasheet - Rev. 1.1, Preliminary

D1								D2							
bit 7	bit 6	bit 5	bit 4	bit 3	bit 2	bit 1	bit 0	bit 7	bit 6	bit 5	bit 4	bit 3	bit 2	bit 1	bit 0
Accelerometer zero-point = 16-bit unsigned value															

6.1.11. SET_Y_ACCEL_BIAS

Description

Manually sets the y-axis accelerometer zero point.

Packet Definition

PT = 0x89

N = 2

D1								D2							
bit 7	bit 6	bit 5	bit 4	bit 3	bit 2	bit 1	bit 0	bit 7	bit 6	bit 5	bit 4	bit 3	bit 2	bit 1	bit 0
Accelerometer zero-point = 16-bit unsigned value															

6.1.12. SET_Z_ACCEL_BIAS

Description

Manually sets the z-axis accelerometer zero point.

Packet Definition

PT = 0x8A

N = 2

D1								D2							
bit 7	bit 6	bit 5	bit 4	bit 3	bit 2	bit 1	bit 0	bit 7	bit 6	bit 5	bit 4	bit 3	bit 2	bit 1	bit 0
Accelerometer zero-point = 16-bit unsigned value															

6.1.13. ZERO_RATE_GYROS

Description

Starts internal self-calibration of all three rate gyro axes. By default, rate gyros are zeroed on IMU startup, but gyro startup calibration can be disabled (or re-enabled) by sending a SET_START_CAL packet

Packet Definition

PT = 0x8B

CHR-6d Digital Inertial Measurement Unit

Product datasheet - Rev. 1.1, Preliminary

N = 0

There are no data bytes associated with the ZERO_RATE_GYROS packet. The checksum immediately follows the packet type identifier (PT).

6.1.14. SELF_TEST

Description

Instructs the IMU to perform a self-test of all sensor channels. The self-test sequence takes approximately 570 milliseconds to complete. During this time, the IMU should be kept stationary. A STATUS_REPORT packet is transmitted after the self-test is complete.

Packet Definition

PT = 0x8C
N = 0

There are no data bytes associated with the SELF_TEST packet. The checksum immediately follows the packet type identifier (PT).

6.1.15. WRITE_TO_FLASH

Description

Writes IMU configuration to on-board flash, so that the configuration persists when the power is cycled.

Packet Definition

PT = 0xA0
N = 0

There are no data bytes associated with the WRITE_TO_FLASH packet. The checksum immediately follows the packet type identifier (PT).

6.1.16. GET_DATA

Description

In Silent Mode, the IMU waits to receive a GET_DATA packet before transmitting sensor data. The most recent data from all active sensor channels is transmitted in response to a GET_DATA packet. In Broadcast Mode, a GET_DATA packet is ignored.

Packet Definition

PT = 0x01
N = 0

CHR-6d Digital Inertial Measurement Unit

Product datasheet - Rev. 1.1, Preliminary

There are no data bytes associated with the GET_DATA packet. The checksum immediately follows the packet type identifier (PT).

6.1.17. GET_GYRO_BIAS

Description

Returns the bias values for all three rate gyros in a GYRO_BIAS_REPORT packet.

Packet Definition

PT = 0x02

N = 0

There are no data bytes associated with the GET_GYRO_BIAS packet. The checksum immediately follows the packet type identifier (PT).

6.1.18. GET_ACCEL_BIAS

Description

Return the bias values for all three accel axes in a ACCEL_BIAS_REPORT packet.

Packet Definition

PT = 0x03

N = 0

There are no data bytes associated with the GET_ACCEL_BIAS packet. The checksum immediately follows the packet type identifier (PT).

6.1.19. GET_FIR_CONFIG

Description

Returns the FIR corner frequency configuration for all six sensor channels in a FIR_CONFIG_REPORT packet.

Packet Definition

PT = 0x04

N = 0

There are no data bytes associated with the GET_FIR_CONFIG packet. The checksum immediately follows the packet type identifier (PT).

CHR-6d Digital Inertial Measurement Unit

Product datasheet - Rev. 1.1, Preliminary

6.1.20. GET_FIR_TAP_CONFIG

Description

Reports the FIR tap count for all sensor channels in a FIR_TAP_CONFIG_REPORT packet.

Packet Definition

PT = 0x05

N = 0

There are no data bytes associated with the GET_FIR_TAP_CONFIG packet. The checksum immediately follows the packet type identifier (PT).

6.1.21. GET_ACTIVE_CHANNELS

Description

Reports which channels are "active." Active channels are sensor channels that are measured and transmitted in response to a GET_DATA packet, or periodically in Broadcast Mode. Active channels are reported in an ACTIVE_CHANNEL_REPORT packet.

Packet Definition

PT = 0x06

N = 0

There are no data bytes associated with the GET_ACTIVE_CHANNELS packet. The checksum immediately follows the packet type identifier (PT).

6.1.22. GET_BROADCAST_MODE

Description

Causes the IMU to send a BROADCAST_MODE_REPORT packet, which specifies whether the IMU is in Broadcast Mode or Silent Mode.

Packet Definition

PT = 0x07

N = 0

There are no data bytes associated with the GET_BROADCAST_MODE packet. The checksum immediately follows the packet type identifier (PT).

CHR-6d Digital Inertial Measurement Unit

Product datasheet - Rev. 1.1, Preliminary

6.2. CHR-6d TX Packets

TX Packets are packets that can be transmitted by the IMU. The structure of transmitted packets is exactly the same as the structure of RX packets.

TX Packet Structure

Function	's'	'n'	'p'	PT	N	d ₁	...	d _N	CHK	
Byte	1	2	3	4	5	6	...	N+5	N+6	N+7

TX Packet Description

1 - 3	Each received packet must begin with the three-byte (character) sequence "snp" to signal the beginning of a new packet.
4	PT specifies the packet type.
5	N specifies the number of data bytes to expect.
6 - (N+5)	d ₁ through d _N contain the N data bytes in the packet.
(N+6) - (N+7)	CHK is a two-byte checksum.

The total size of a packet with N data bytes is (N + 7) bytes.

6.2.1. CHR-6d TX Packet Overview

Packet Name	PT	Description
COMMAND_COMPLETE	0xB0	Transmitted by the IMU upon successful completion of a command that does not require data to be returned.
COMMAND_FAILED	0xB1	Transmitted by the IMU when a command received over the UART could not be executed.
BAD_CHECKSUM	0xB2	Transmitted by the IMU when a received packet checksum does not match the sum of the other bytes in the packet.
BAD_DATA_LENGTH	0xB3	Transmitted by the IMU when a received packet contained more or less data than expected for a given packet type.
UNRECOGNIZED_PACKET	0xB4	Transmitted if the IMU receives an unrecognized packet.
BUFFER_OVERFLOW	0xB5	Transmitted by the IMU when the internal receive buffer overflows before a full packet is received.
STATUS_REPORT	0xB6	Transmitted at the end of a self-test procedure, triggered by a SELF_TEST command.
SENSOR_DATA	0xB7	Sent in response to a GET_DATA packet, or sent automatically in Broadcast Mode.
GYRO_BIAS_REPORT	0xB8	Sent in response to the GET_GYRO_BIAS command.
ACCEL_BIAS_REPORT	0xB9	Sent in response to the GET_ACCEL_BIAS command.
FIR_CONFIG_REPORT	0xBA	Sent in response to the GET_FIR_CONFIG command.
FIR_TAP_CONFIG_REPORT	0xBB	Sent in response to the GET_FIR_TAP_CONFIG command.
ACTIVE_CHANNEL_REPORT	0xBC	Sent in response to a GET_ACTIVE_CHANNELS

		command.
BROADCAST_MODE_REPORT	0XB0	Sent in response to a GET_BROADCAST_MODE command.

6.2.2. COMMAND_COMPLETE

Description

Transmitted by the IMU upon successful completion of a command that does not require data to be returned.

Packet Definition

PT = 0xB0

N = 1

D1							
bit 7	bit 6	bit 5	bit 4	bit 3	bit 2	bit 1	bit 0
Packet Type (TP) identifier for executed command							

6.2.3. COMMAND_FAILED

Description

Transmitted by the IMU when a command received over the UART could not be executed.

Packet Definition

PT = 0xB1

N = 1

D1							
bit 7	bit 6	bit 5	bit 4	bit 3	bit 2	bit 1	bit 0
Packet Type (TP) identifier for command that could not be executed							

6.2.4. BAD_CHECKSUM

Description

Transmitted by the IMU when a received packet checksum does not match the sum of the other bytes in the packet.

Packet Definition

PT = 0xB2

N = 0

6.2.5. BAD_DATA_LENGTH

Description

Transmitted by the IMU when a received packet contained more or less data than expected for a given packet type.

Packet Definition

PT = 0xB3

N = 1

D1							
bit 7	bit 6	bit 5	bit 4	bit 3	bit 2	bit 1	bit 0
Packet Type (TP) identifier of the received packet							

6.2.6. UNRECOGNIZED_PACKET

Description

Transmitted if the IMU receives an unrecognized packet

Packet Definition

PT = 0xB4

N = 1

D1							
bit 7	bit 6	bit 5	bit 4	bit 3	bit 2	bit 1	bit 0
Packet Type (TP) identifier of unrecognized command							

6.2.7. BUFFER_OVERFLOW

Description

Transmitted by the IMU when the internal receive buffer overflows before a full packet is received.

Packet Definition

PT = 0xB5

N = 0

6.2.8. STATUS_REPORT

Description

Transmitted at the end of a self-test procedure, triggered by a SELF_TEST command.

Packet Definition

PT = 0xB6

N = 1

D1							
bit 7	bit 6	bit 5	bit 4	bit 3	bit 2	bit 1	bit 0
NA	NA	gyro_z error	gyro_y error	gyro_x error	accel_z error	accel_y error	accel_x error

If the self-test failed for any of the channels, then the corresponding bit will be set (i.e. if the z-axis gyro fails the self-test, then bit 5 will be set, etc.)

6.2.9. SENSOR_DATA

Description

Sent in response to a GET_DATA packet, or sent automatically in Broadcast Mode. Only active channels are included in the packet.

Packet Definition

PT = 0xB7

N = 1 + 2*(# of active channels)

The first byte following the PT byte indicates which channels are active. The actual sensor data is contained in the remaining data bytes.

If all channels are active, then data is given in the following order: { gyro_z, gyro_y, gyro_x, accel_z, accel_y, accel_x }, where D1 and D2 correspond to gyro_z, D3 and D4 to gyro_y, etc. Data is returned as 16-bit two's-complement integers.

When one or more channel is inactive, then the data is returned in the same order, but skipping the inactive channels. For example, if gyro_z, gyro_x, and accel_y are disabled, then the data is given in the following order: { gyro_y, accel_z, accel_x }.

D1				D2				D3	D4	D5	...
bit 7	bit 6	bit 5	bit 4	bit 3	bit 2	bit 1	bit 0	first active	second		
NA	NA	gz	gy	gx	az	ay	ax	channel	active		...

gz = 1 if the z-axis gyro is active, 0 otherwise

gy = 1 if the y-axis gyro is active, 0 otherwise

gx = 1 if the x-axis gyro is active, 0 otherwise

az = 1 if the z-axis accelerometer is active, 0 otherwise

ay = 1 if the y-axis accelerometer is active, 0 otherwise

ax = 1 if the x-axis accelerometer is active, 0 otherwise

6.2.10. GYRO_BIAS_REPORT

Description

Sent in response to the GET_GYRO_BIAS command

Packet Definition

PT = 0xB8

N = 6

D1	D2	D3	D4	D5	D6
gyro_z bias		gyro_y bias		gyro_x bias	

6.2.11. ACCEL_BIAS_REPORT

Description

Sent in response to the GET_ACCEL_BIAS command

Packet Definition

PT = 0xB9

N = 6

D1	D2	D3	D4	D5	D6
accel_z bias		accel_y bias		accel_x bias	

6.2.12. FIR_CONFIG_REPORT

Description

Sent in response to the GET_FIR_CONFIG command

Packet Definition

PT = 0xBA

N = 3

D1				D2				D3									
7	6	5	4	3	2	1	0	7	6	5	4	3	2	1	0		
gyro_z				gyro_y				gyro_x				acc_z		acc_y		acc_x	

The corner frequency of the FIR filter is given by $10^*(x-1)$, where x is a 4-bit unsigned integer. If $acc_x = 0b0011 = 3$, then the corner of the FIR filter on the accelerometer x-axis is 20 Hz.

If x is equal to 0 or 1, then the FIR filter is disabled on that channel.

6.2.13. FIR_TAP_CONFIG_REPORT

Description

Sent in response to the GET_FIR_TAP_CONFIG command.

Packet Definition

PT = 0xBB

N = 2

D1								D2							
bit 7	bit 6	bit 5	bit 4	bit 3	bit 2	bit 1	bit 0	bit 7	bit 6	bit 5	bit 4	bit 3	bit 2	bit 1	bit 0
NA		NA		gyro_z		gyro_y		gyro_x		accel_z		accel_y		accel_x	

For each channel, the number of taps in the FIR filter is specified by a 2-bit value, where

00 = 8 taps

01 = 16 taps

10 = 32 taps

11 = 64 taps

6.2.14. ACTIVE_CHANNEL_REPORT

Description

Sent in response to a GET_ACTIVE_CHANNELS command

Packet Definition

PT = 0xBC

N = 1

D1							
bit 7	bit 6	bit 5	bit 4	bit 3	bit 2	bit 1	bit 0
NA	NA	gyro_z	gyro_y	gyro_x	accel_z	accel_y	accel_x

A set bit indicates that the specified channel is active.

6.2.15. BROADCAST_MODE_REPORT

Description

Sent in response to a GET_BROADCAST_MODE packet. Specifies whether the IMU is in Broadcast Mode or Silent Mode. Also specifies the broadcast frequency if the IMU is in Broadcast Mode.

Packet Definition

PT = 0xBD

N = 2

D1								D2							
bit 7	bit 6	bit 5	bit 4	bit 3	bit 2	bit 1	bit 0	bit 7	bit 6	bit 5	bit 4	bit 3	bit 2	bit 1	bit 0
x								NA	NA	NA	NA	NA	NA	NA	mode

The broadcast frequency is given by

$$f = ((380/255)*x + 20) \text{ Hz}$$

where f is the broadcast frequency, and x is the byte stored in D1. The broadcast frequency thus ranges between 400 Hz (when $x = 255$) and 20 Hz (when $x = 0$).

If $mode = 1$, then the IMU is in Broadcast Mode.

If $mode = 0$, then the IMU is in Silent Mode.

This document is provided as reference only; "typical" device specifications must be evaluated by the end-user. CH Robotics reserves the right to modify this document and the products it describes without notice.

CH Robotics products are not intended for use in weapons systems, aircraft, life-saving or life-sustaining systems, automobiles, or any other application where failure could result in injury, death, property damage, or environmental damage.