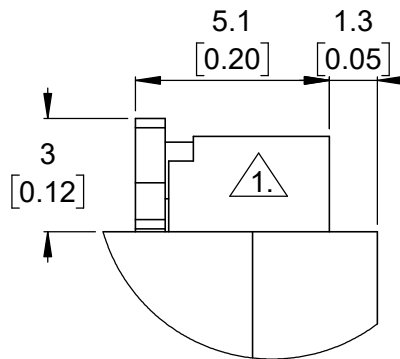
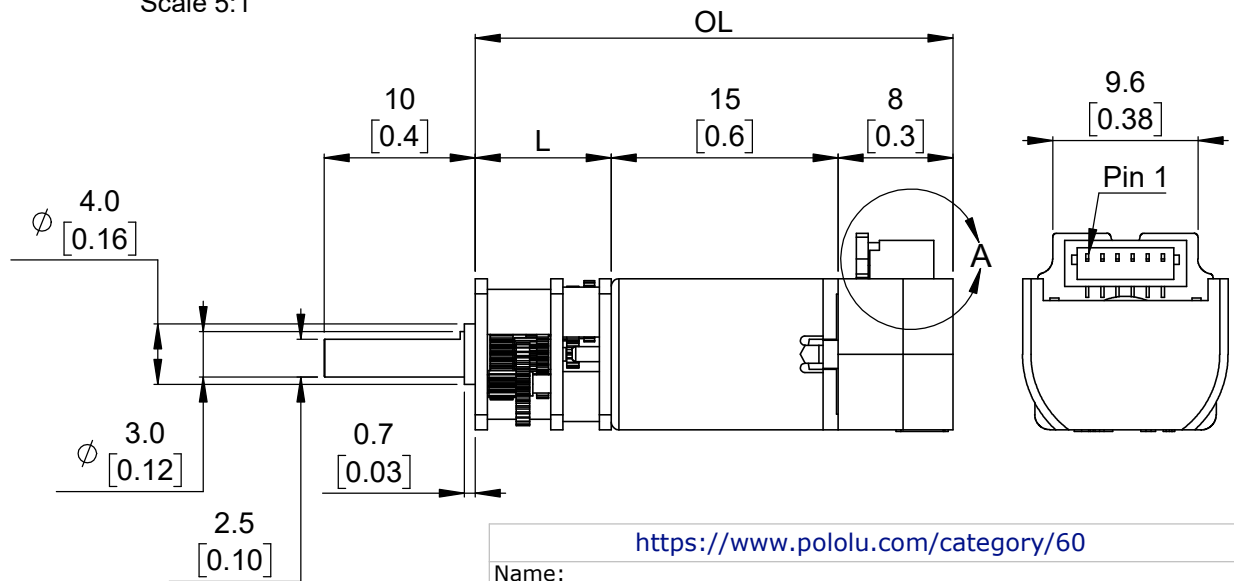
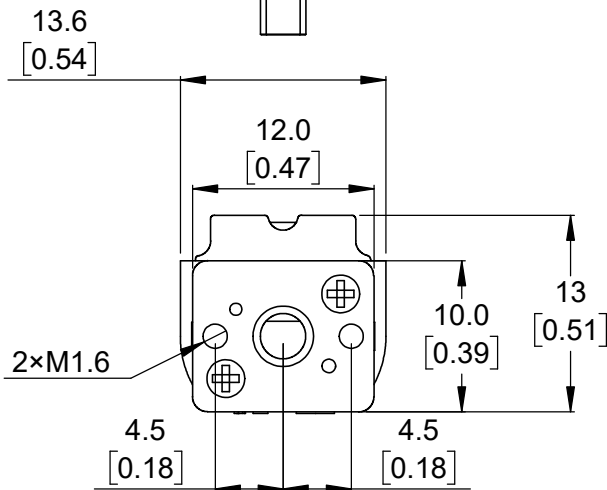
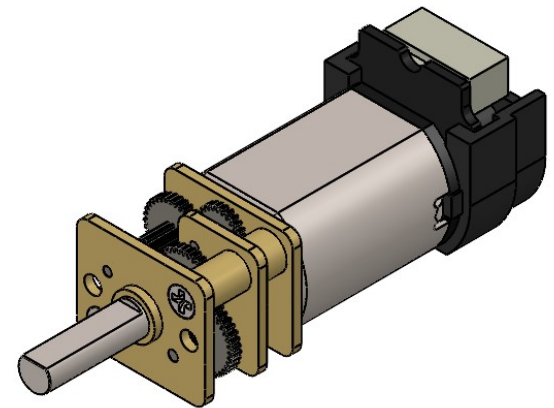


Gear Ratio	L	OL max. (overall length maximum)
1000:1	12.5 mm [0.5 in]	36 mm [1.42 in]
All others	9 mm [0.35 in]	32.5 mm [1.28 in]



Detail A
Scale 5:1




<https://www.pololu.com/category/60>

Name:
Micro Metal Gearmotors with 12 CPR Encoder, Back Connector

Drawing date:
03 April 2024

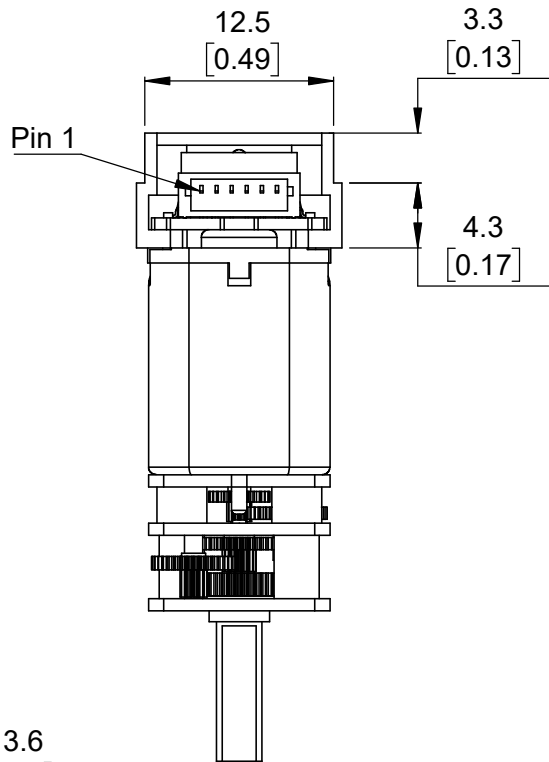
Units: mm [in] Material: mixed



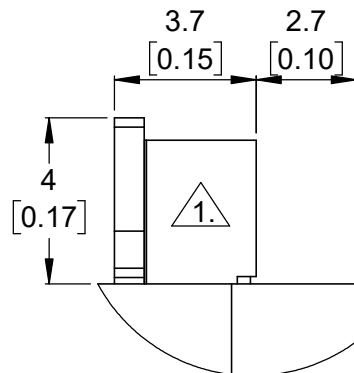
© 2024 Pololu Corporation

1. This connector is compatible with JST part number SHR-06V-S and Pololu 6-Pin Female JST SH-Style Cables.
2. To get the specified scale, select 100% in print settings.

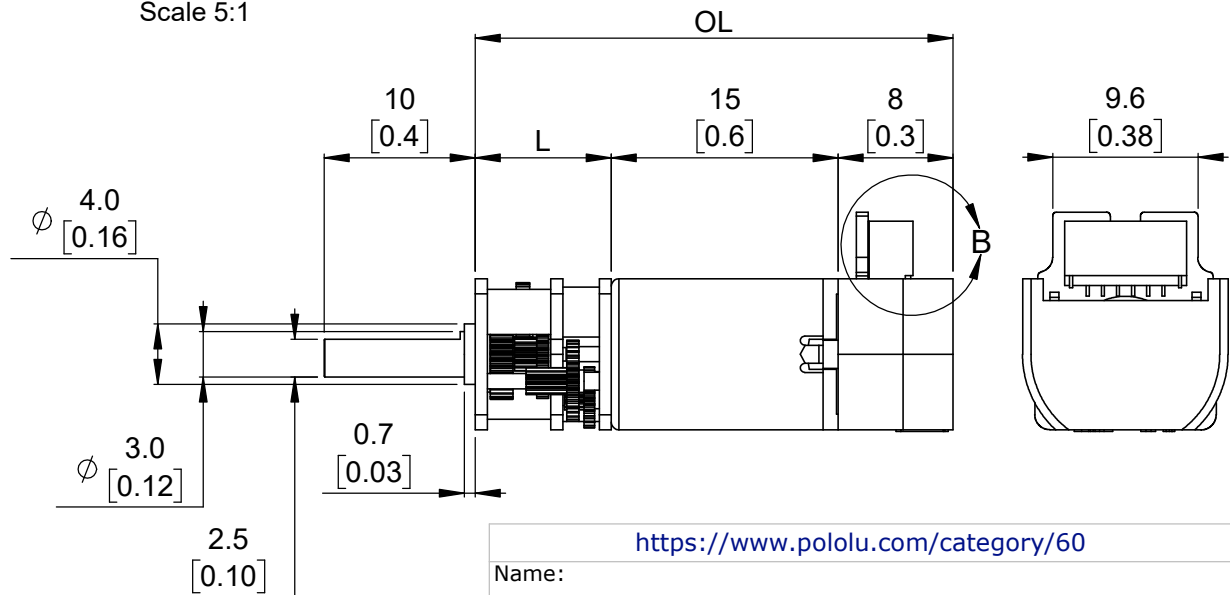
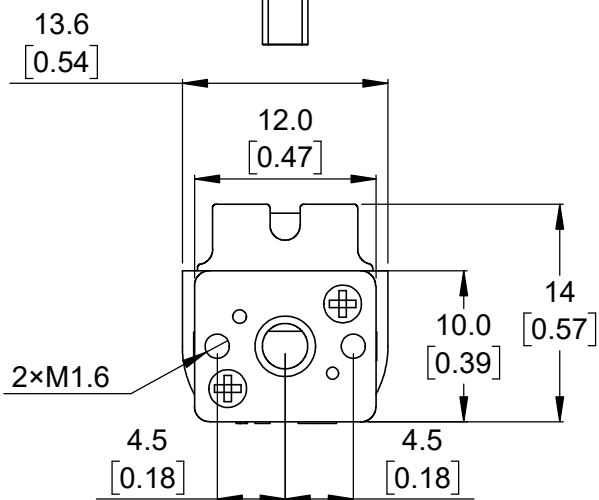
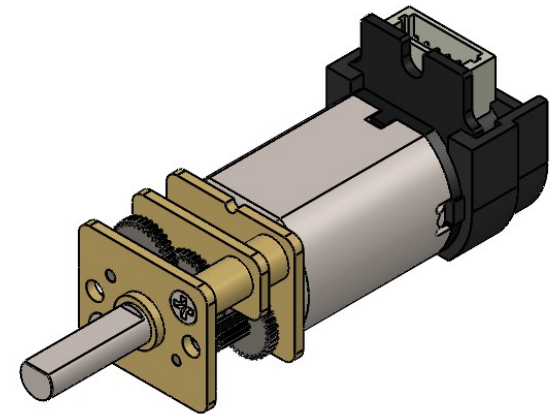
Scale 2:1



Gear Ratio	L	OL max. (overall length maximum)
1000:1	12.5 mm [0.5 in]	36 mm [1.42 in]
All others	9 mm [0.35 in]	32.5 mm [1.28 in]



Detail B
Scale 5:1



Scale 2:1

1. This connector is compatible with JST part number SHR-06V-S and Pololu 6-Pin Female JST SH-Style Cables.
2. To get the specified scale, select 100% in print settings.

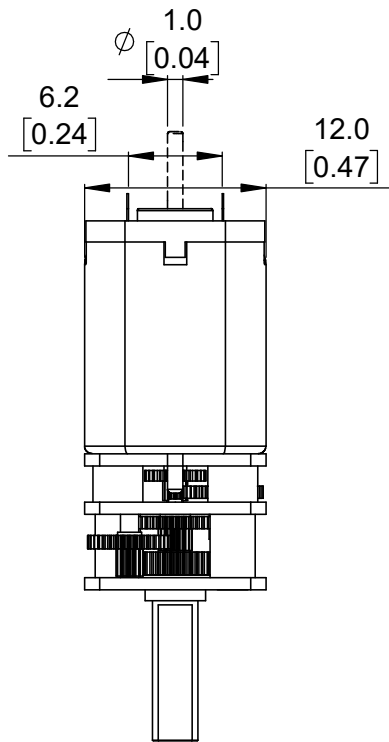
<https://www.pololu.com/category/60>

Name:
Micro Metal Gearmotors with 12 CPR Encoder, Side Connector

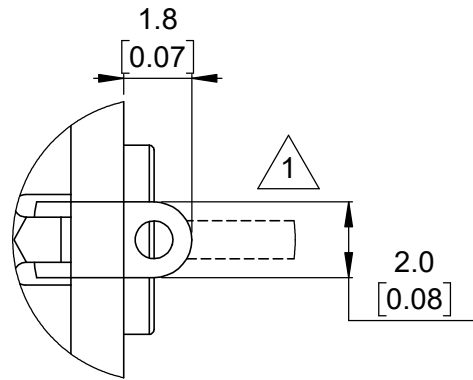
Drawing date:
03 April 2024

Units: mm [in]
Material: mixed

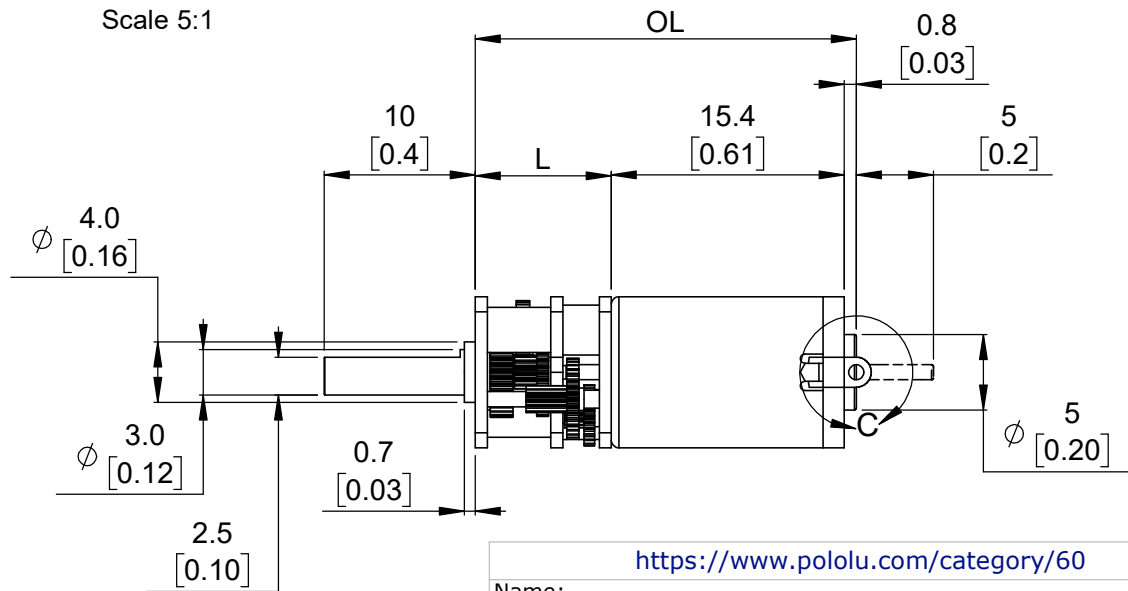
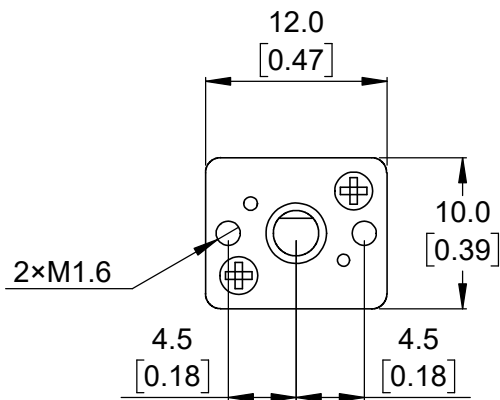
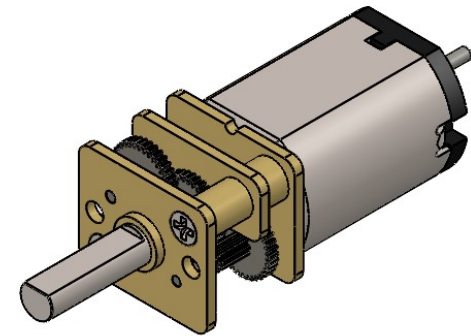
Pololu
Robotics & Electronics
© 2024 Pololu Corporation



Gear Ratio	L	OL max. (overall length maximum)
1000:1	12.5 mm [0.5 in]	29.1 mm [1.15 in]
All others	9 mm [0.35 in]	25.6 mm [1.01 in]



Detail C
Scale 5:1



Scale 2:1

<https://www.pololu.com/category/60>

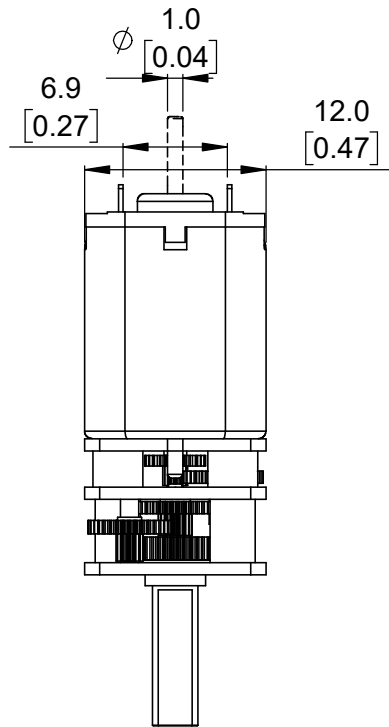
Name:
Micro Metal Gearmotors with carbon brushes (HPCB), NO encoder

Drawing date:
03 April 2024

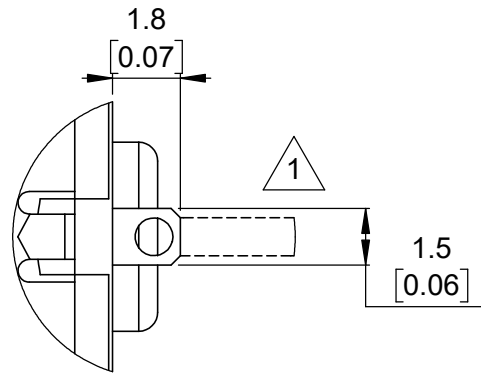
Units: mm [in]
Material: mixed

Pololu
Robotics & Electronics
© 2024 Pololu Corporation

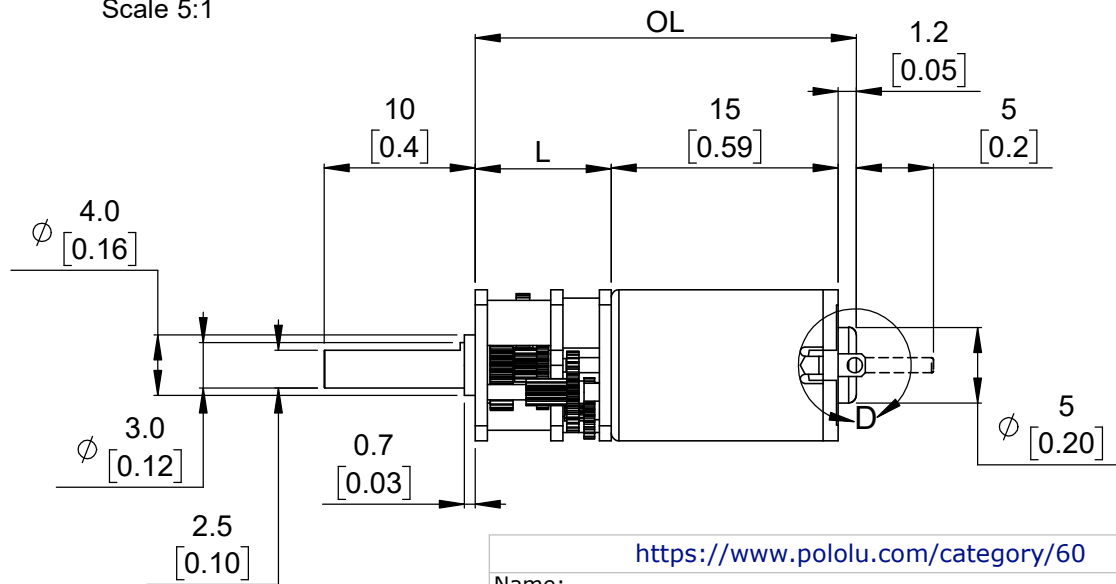
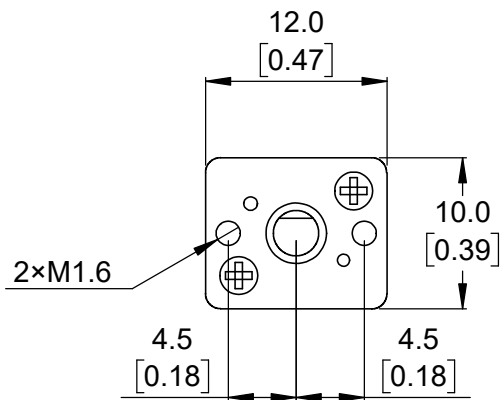
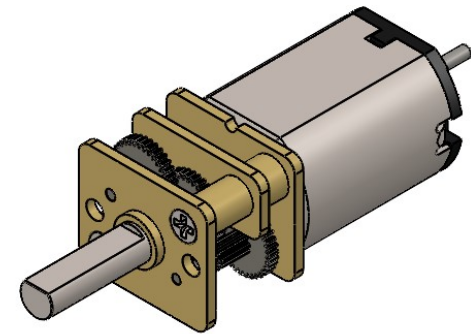
1. The dashed line indicates the location of the rear motor shaft that is present on "Extended Motor Shaft" versions.
2. To get the specified scale, select 100% in print settings.



Gear Ratio	L	OL max. (overall length maximum)
1000:1	12.5 mm [0.5 in]	29.1 mm [1.15 in]
All others	9 mm [0.35 in]	25.6 mm [1.01 in]



Detail D
Scale 5:1



<https://www.pololu.com/category/60>

Name:
Micro Metal Gearmotors with precious metal brushes (LP, MP, and HP), NO encoder

Drawing date:
03 April 2024

Units: mm [in]
Material: mixed

Pololu
Robotics & Electronics
© 2024 Pololu Corporation

- The dashed line indicates the location of the rear motor shaft that is present on "Extended Motor Shaft" versions.
- To get the specified scale, select 100% in print settings.

Scale 2:1