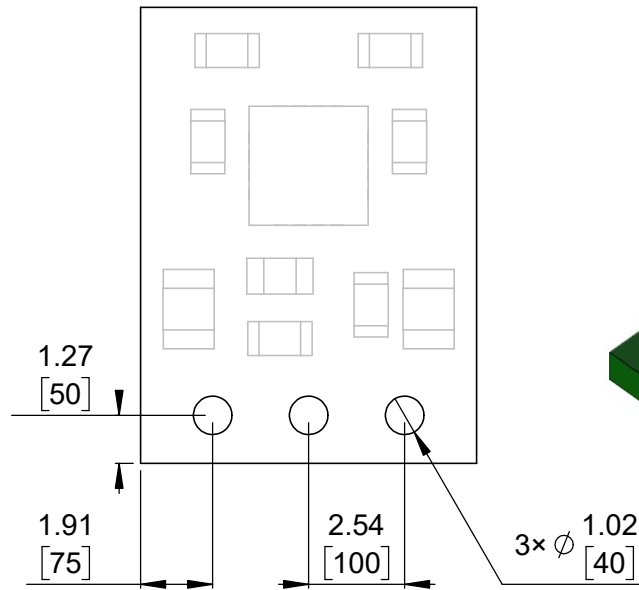
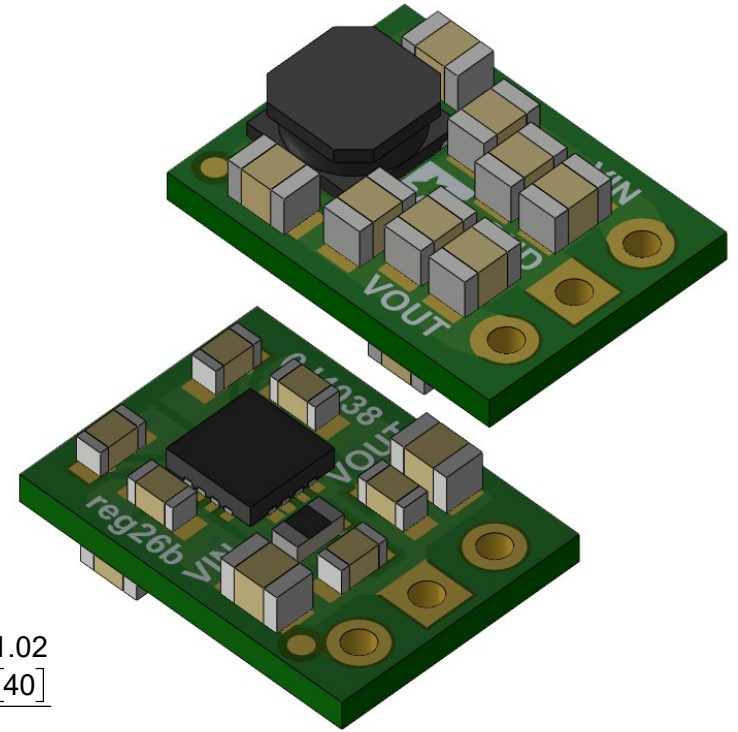


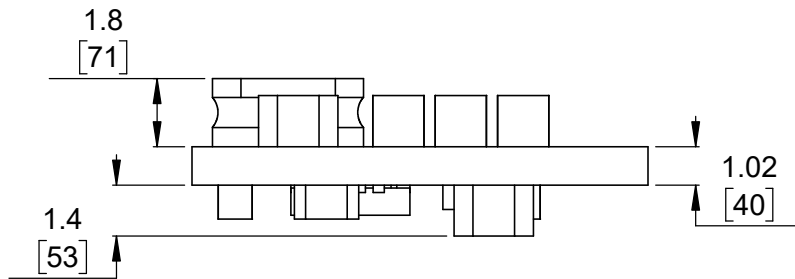
① Board dimensions (top view)  
Scale 5:1



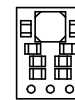
② Connector callouts (bottom view)  
Scale 5:1



③ Isometric view  
Scale 5:1




④ Profile  
Scale 5:1

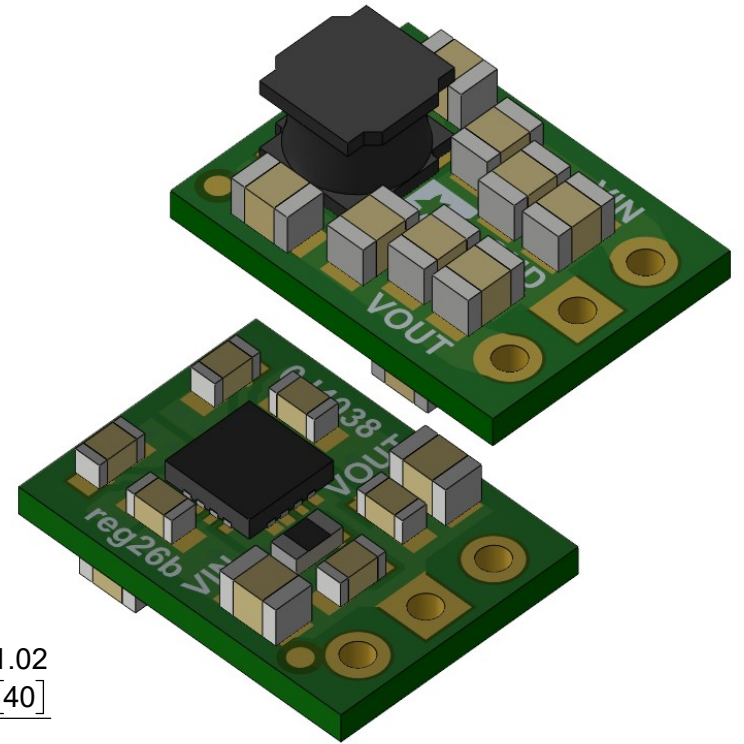
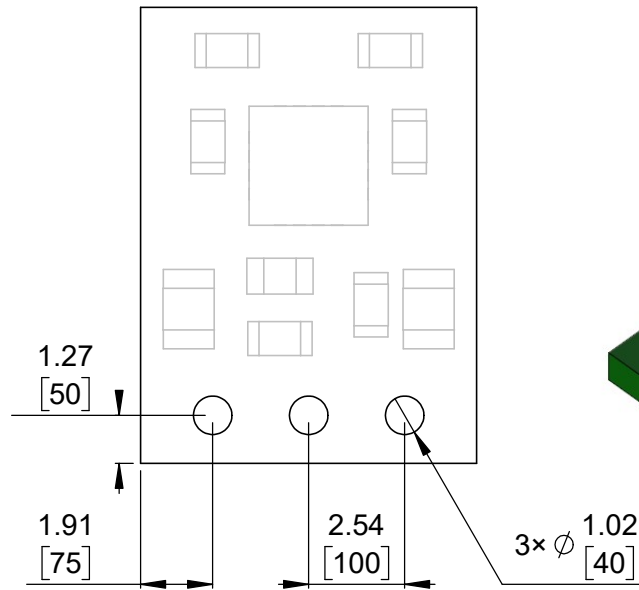
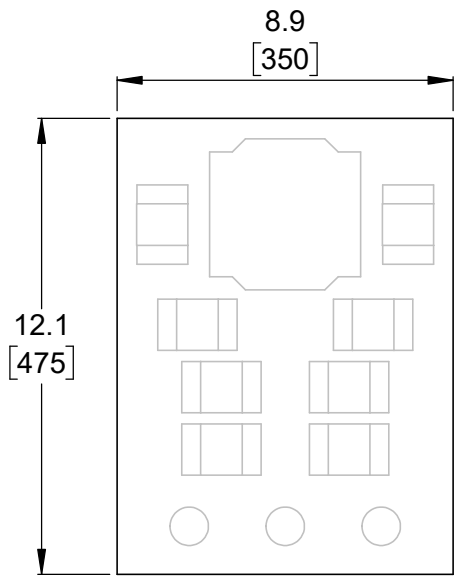


⑤ Actual size  
Scale 1:1

1. To get the specified scale, select 100% in print settings.
2. Drill location tolerance:  $\pm 0.1$  [ $\pm 5$ ].
3. Board edge tolerance:  $\pm 0.3$  [ $\pm 10$ ].

<https://www.pololu.com/product/4083>

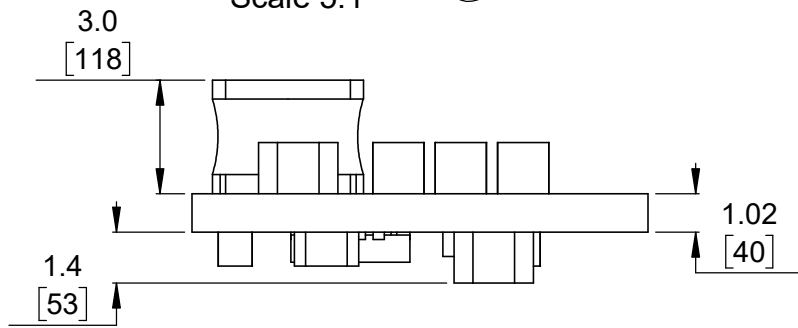
Name: 5V, 1A Step-Up/Step-Down Voltage Regulator S13V10F5		Item number: 4083
Drawing date: 5 January 2022	Dev code: reg26b	 © 2022 Pololu Corporation
Units: mm [mil]	Material: mixed	



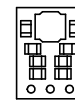
① Board dimensions (top view)  
Scale 5:1

② Connector callouts (bottom view)  
Scale 5:1

③ Isometric view  
Scale 5:1



④ Profile  
Scale 5:1



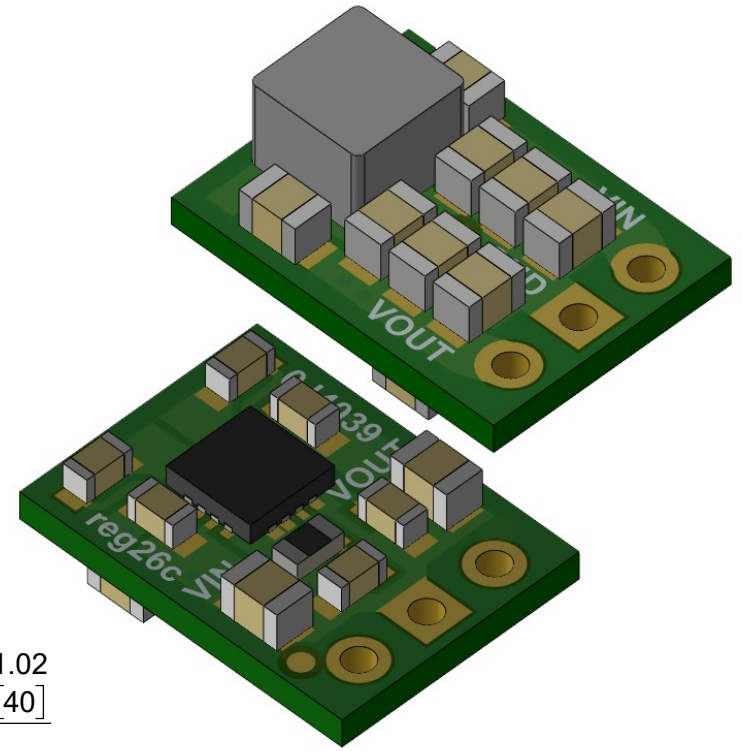
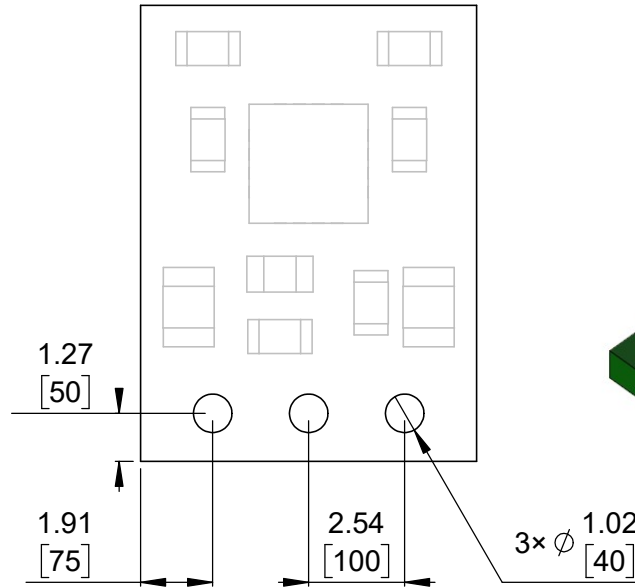
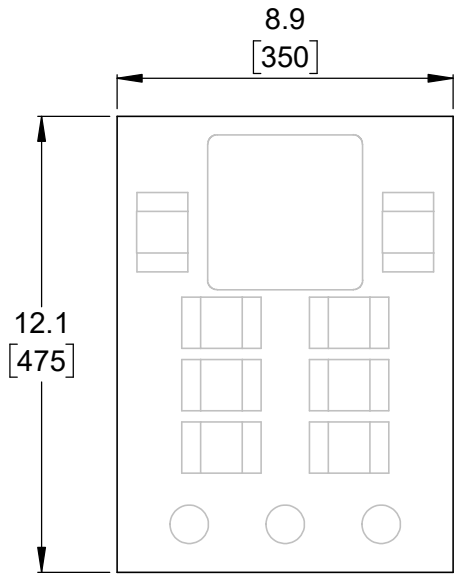
⑤ Actual size  
Scale 1:1

1. To get the specified scale, select 100% in print settings.
2. Drill location tolerance:  $\pm 0.1$  [ $\pm 5$ ].
3. Board edge tolerance:  $\pm 0.3$  [ $\pm 10$ ].

<https://www.pololu.com/product/4084>

Name: 5V, 1.5A Step-Up/Step-Down Voltage Regulator S13V15F5		Item number: 4084	
Drawing date: 5 January 2022		Dev code: reg26b	
Units: mm [mil]		Material: mixed	

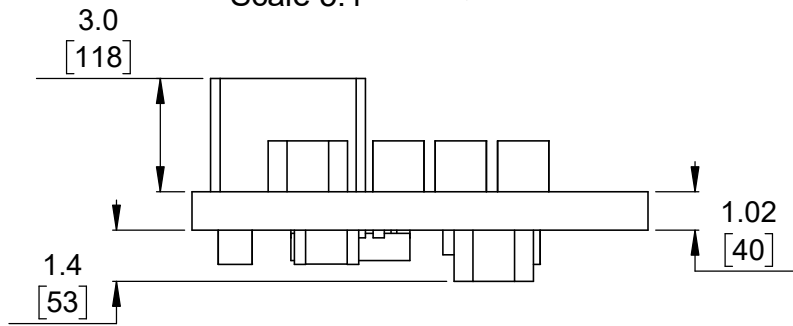




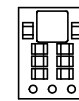
① Board dimensions (top view)  
Scale 5:1

② Connector callouts (bottom view)  
Scale 5:1

③ Isometric view  
Scale 5:1



④ Profile  
Scale 5:1

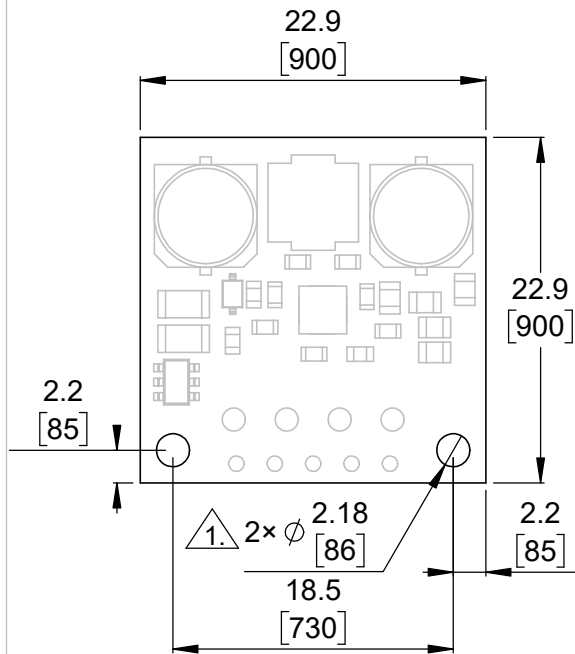


⑤ Actual size  
Scale 1:1

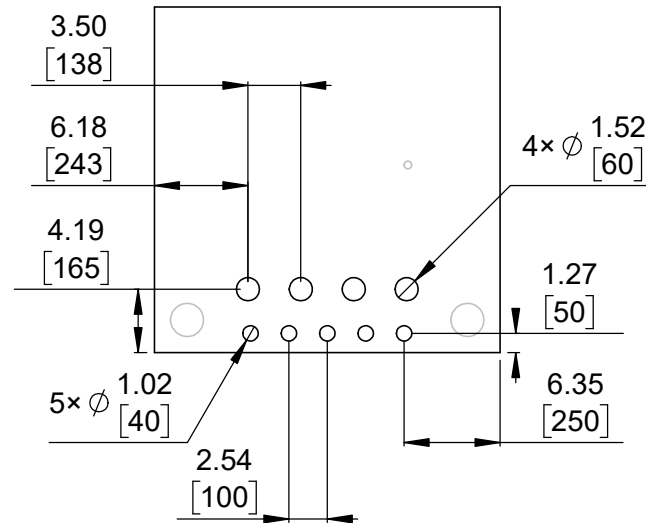
1. To get the specified scale, select 100% in print settings.
2. Drill location tolerance:  $\pm 0.1$  [ $\pm 5$ ].
3. Board edge tolerance:  $\pm 0.3$  [ $\pm 10$ ].

<a href="https://www.pololu.com/product/4085">https://www.pololu.com/product/4085</a>	
Name: 5V, 2A Step-Up/Step-Down Voltage Regulator S13V20F5	Item number: 4085
Drawing date: 5 January 2022	Dev code: reg26c
Units: mm [mil]	Material: mixed

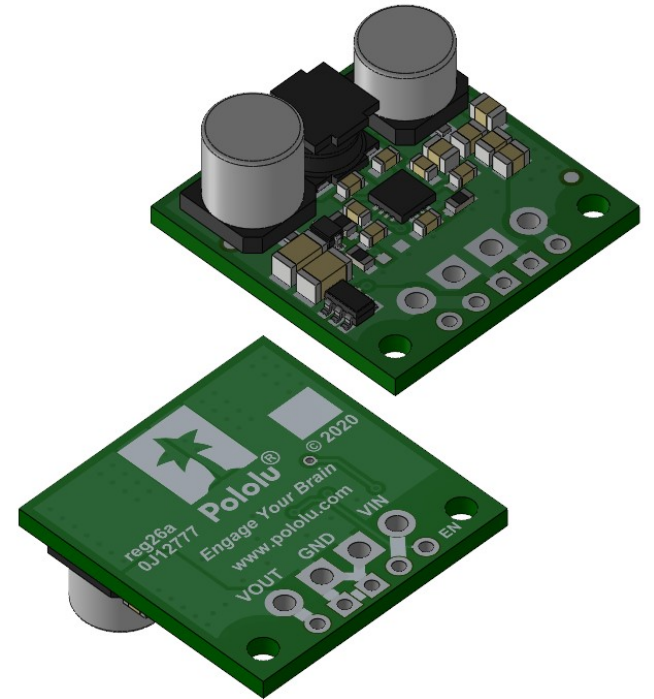




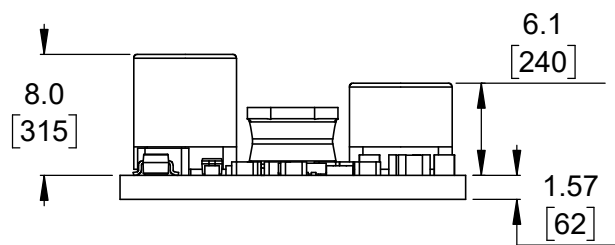
① Board dimensions (top view)  
Scale 2:1



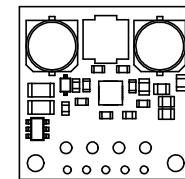
② Connector callouts (bottom view)  
Scale 2:1



③ Isometric view  
Scale 2:1




④ Profile  
Scale 2:1



⑤ Actual size  
Scale 1:1

- ①. Intended for #2 and M2 screws.
- ②. To get the specified scale, select 100% in print settings.
- ③. Drill location tolerance:  $\pm 0.1$  [ $\pm 5$ ].
- ④. Board edge tolerance:  $\pm 0.3$  [ $\pm 10$ ].

<https://www.pololu.com/product/4082>

Name: 5V, 3A Step-Up/Step-Down Voltage Regulator S13V30F5		Item number: 4082
Drawing date: 5 January 2022	Dev code: reg26a	 © 2022 Pololu Corporation
Units: mm [mil]	Material: mixed	