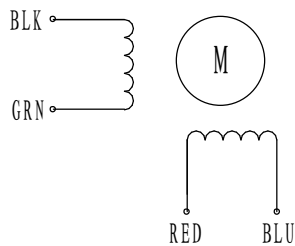


# HIGH TORQUE HYBRID STEPPING MOTOR SPECIFICATIONS

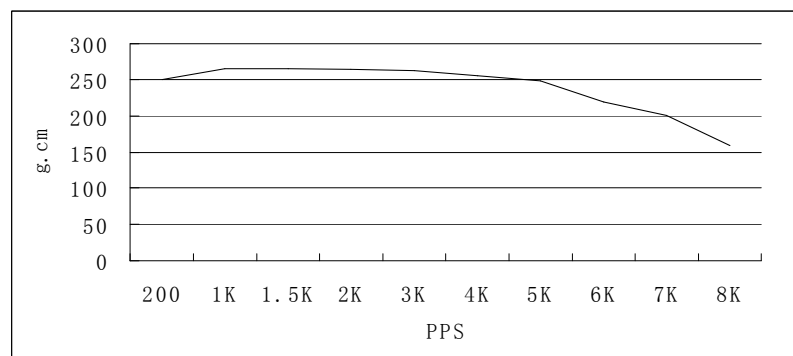
General specifications		Electrical specifications	
Step Angle (°)	1.8	Rated Voltage (V)	4.32
Temperature Rise (°C)	80 Max (rated current, 2 phase on)	Rated Current (A)	0.8
Ambient Temperature (°C)	-20~+50	Resistance Per Phase ( $\pm 10\%$ $\Omega$ )	5.4 (25°C)
Number of Phase	2	Inductance Per Phase ( $\pm 20\%$ mH)	1.5
Insulation Resistance (M $\Omega$ )	100 Min (500VDC)	Holding Torque (g.cm)	300
Insulation Class	Class B		
Max.radial force (N)	28 (20mm from the flange)		
Max.axial force (N)	10		

● Wiring Diagram :



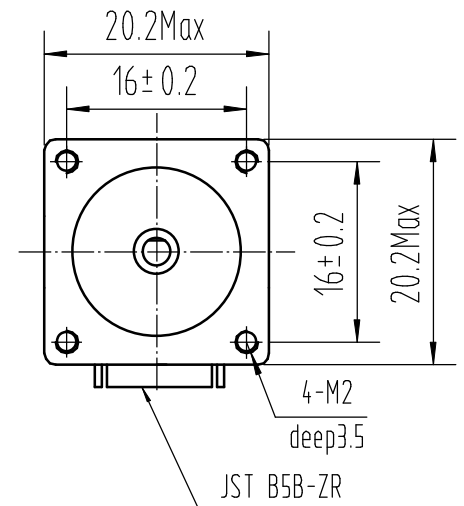
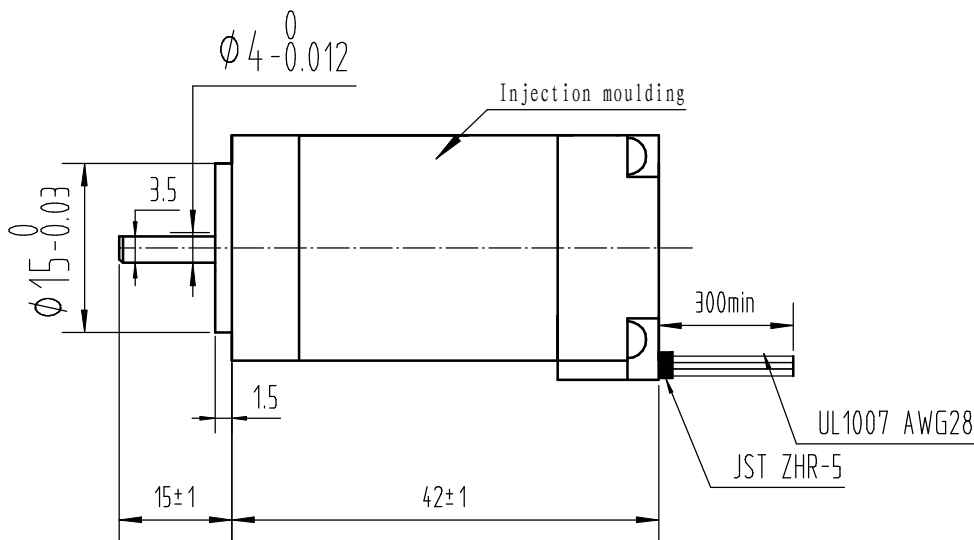
● Pull out torque curve :

VOLTAGE: 24VDC, CONSTANT CURRENT: 0.8A, HALF STEP



● Dimensions:

(unit=mm)



					SY20STH42-0804A	TECHNICAL CONDITIONS
REV	REVISIONS	DESCRIPTION	BY	DATE	CHANGZHOU SONGYANG MACHINERY & ELECTRONICS NEW TECHNIC INSTITUTE	010042054
DRAW	2020.3.2					
CHECK						
APPROVE						